

ADMISSIONS

Saint Luke Institute at Marsalin can accept admissions anytime of the day or night. However, it is preferred that a telephone contact be made with us prior to any decision in order to plan properly and to give you advice to help in a successful intervention process.

If it is your desire that a staff member come to you to aid in the intervention process, it is necessary for the Superior to telephone and discuss the plans in detail.

All priests and women and men religious of the Roman Catholic faith are welcome as guests at the Saint Luke Institute. We also extend our care to Protestant and Jewish clergypersons. We are unable, unfortunately, to accept at the Holliston facility any persons who require continuous skilled nursing care because of physical disabilities.

If acute detoxification is required, we will proceed with admission to our nearby detoxification unit. However, if detoxification is anticipated from past experience or current medical evaluation, please call us ahead so that we may arrange for immediate hospitalization.

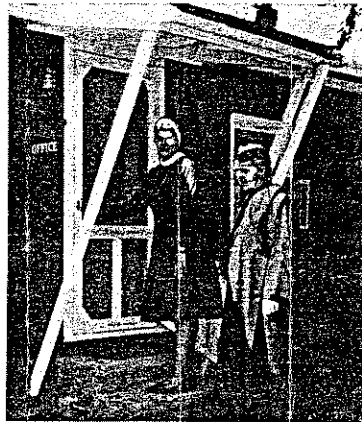
RATES

The daily all-inclusive rate is established by the Commonwealth of Massachusetts Rate Setting Commission. Therefore, we cannot quote accurately a daily rate. It is necessary to charge for additional services such as transportation, hospitalization, special medicine or testing.

A minimum deposit for two weeks is required on the day of admission. The anticipated length of residential treatment is 90-120 days.

INSURANCE COVERAGE

Every attempt will be made to aid the Diocese or religious community to recover third-party payments while in treatment at this facility. We are in the process of applying for accreditation from the Joint Commission on Accreditation of Hospitals.



INFORMATION

For further information and planning instructions, please call or write to Fr. Michael R. Peterson, M.D., or Sr. Cordis Burns, R.N.

SAINT LUKE'S PROFESSIONAL STAFF

Physician/Psychiatrist-Priest
Ph.D. Clinical Psychologist
Psychiatric Social Worker-Priest
Alcoholism Counselor-Registered Nurse
Alcoholism Counselor-Practical Nurse
Alcoholism Counselor-A.A. Coordinator
Alcoholism Counselor-Ai-Anon Coordinator
Spiritual Director
Art Therapist
Recreational Therapist
Dietician
Theology Faculty Consultants

SAINT LUKE'S BOARD OF DIRECTORS

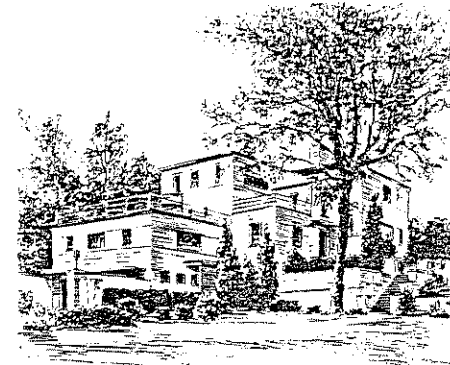
Rev. Michael R. Peterson, M.D.
Director, Saint Luke Institute
Rev. Harry J. Flynn
Rector, Mount St. Mary's Seminary
Sister Carla Przybilla, O.S.F.
Executive Director, National Religious
Formation Conference
Most Rev. Thomas W. Lyons
Auxiliary Bishop of Washington, D.C.
Rev. Alcuin Coyle, O.F.M.
President, Chicago Theological Union
Sister Anna Polcino, M.D., S.C.M.M.
Medical Director, House of Affirmation
Sister Alice Anita, S.S.J.
Superior General, Sisters of St. Joseph
of Chestnut Hill
Sister Helen Marie, C.S.C.
Administrator, Holy Cross Hospital
of Silver Spring, Md.

MARSALIN-SAINT LUKE
120 GOULDING STREET
HOLLISTON, MASSACHUSETTS 01746
(617) 429-4307

ORGANIZATION

The Saint Luke Institute and the Marsalin Institute are non-profit corporations which operate the Saint Luke Institute at Marsalin. The Institutes are not endowed, but receive support through client fees and from contributions. All gifts are tax deductible.

THE Saint Luke Institute AT MARSALIN



A MATURE CHRISTIAN EXPERIENCE IN
SOBRIETY FOR PRIESTS AND RELIGIOUS
WOMEN AND MEN.

50600016

"I was a stranger and you welcomed me.
... I was ill and you comforted me." (Matt. 25:35)

SAINT LUKE'S

A loving, home environment for the therapeutic and spiritual community of priests and religious women and men. Professionally staffed by a group of dedicated men and women — clergy, religious, and lay persons — some of whom are themselves in recovery from chemical dependency.

At the center of this community will be the Holy Eucharist from which both staff and guests will draw strength and inspiration in their efforts to help one another.

OUR PHILOSOPHY

The Saint Luke Institute at Marsalin offers a special kind of rehabilitation to answer the unique problems that alcohol abuse/chemical dependency pose for men and women in the active ministry of the Church. Research suggests that this population, along with physicians and nurses, have particular areas of difficulties associated with chemical abuse. The guests of the Saint Luke Institute will be received as persons who have special dignity and value as ministers of God. When physiological healing has begun, special attention will be paid to the educational, psychological and spiritual aspects of the complete healing process in these dedicated people. Throughout the six major stages of this process, the Twelve Steps of Alcoholics Anonymous serve as the foundation and structure of the program.

A most difficult part of the healing process for the alcoholic religious and his/her community is the acceptance of the drinking/drug problem. A professional staff member will go to the Diocese or religious community to help in the confrontation of the reality of the problem. At the end of the stay at the Saint Luke Institute, a professional staff member will return with the guest to his or her local community to assist in the vitally important reintegration process. During the period of rehabilitation at Saint Luke's, it is expected that a member of the community or Diocese will visit at the Institute to initiate the community involvement with the reintegration and to assist them with community healing.

STEPS TOWARD HEALING

1. Individual self-recognition of the problem
2. Physiological renewal
3. Psychological focusing
4. Educational focusing
5. Active apostolic work
6. Reintegration program

OUR PROGRAM

Each guest will be evaluated medically and neurologically immediately upon entry into the facility. Some few persons may require intense medical supervision in a specialized detoxification unit. We have a close relationship with two such facilities when this service is needed.

We shall help each individual to begin regrowth in areas of alcohol-drug education, theological-liturgical education, spiritual formation, and reintegration into his or her new role in the Church, all within the context of a religious, therapeutic community. Because of our proximity to Boston, we shall be able to provide a period of trial apostolic work while the guest still resides within the therapeutic community. Some of the Church's great scholars will be available for lecture series and workshop experiences. We shall be able to offer almost any experience that would be helpful to the guest for his or her future apostolic work.



A UNIQUE INSTITUTE

Our Program Helps Chemically Dependent Persons ...

- ... to recognize the problem chemicals pose in their lives.
- ... to choose to live freely without the harmful drugs.
- ... to understand the physiological aspects of their illness.
- ... to grow in both the psychological and sociological aspects of their lives through involvement in the therapeutic community.
- ... to gain confidence through the educational, apostolic and vocational aspects of the program.
- ... to be an effective minister within the Church.
- ... to reintegrate as fully functioning, whole persons into their communities or dioceses.
- ... to participate responsibly in a structured aftercare program and the Fellowship of A.A.
- ... to participate in the education of their communities and peers.
- ... to move toward complete healing and spiritual freedom with its dynamic growth.
- ... to discern how the Holy Spirit is at work in their lives.

OUR WAYS OF HELPING

- The Twelve Steps of Alcoholics Anonymous
- Specialized medical and neurological evaluation and treatment
- Psychological evaluation and individualized treatment plan
- Daily group therapy
- Individual counseling
- Chemical dependency education
- Theological and liturgical workshops
- Psychodrama
- Art therapy
- Bibliotherapy
- Recreational therapy

AFTERCARE PLANNING

A continuing program of follow-up evaluation and supportive contact with each guest will be maintained by the Institute. An essential aspect of the Aftercare program designed for each guest will be continual involvement with Alcoholics Anonymous. During the stay at the Institute, every effort will be made to introduce guests to the principles of the Fellowship and to experience every type of A.A. meeting, both on the premises and within the local area. Once the guest has begun to work within the A.A. program, it will be an easy transition to his or her local A.A. groups when he or she returns home.

Phone contact will always be available after discharge, and workshops will be provided at six-month intervals for guests who have returned home.



IN SUMMARY

Studies of treatment programs suggest a relationship between the quality of the initial program and the rate of success in recovery. Saint Luke's Institute envisages an individualized, comprehensive treatment plan as the key to that quality. Therefore, our program allows time for physiological and psychological healing, as well as renewal and updating of apostolic commitment in the context of each individual plan. This special plan, lived and worked out in a spiritually therapeutic family and coupled with a structured followup (Aftercare) program, will allow the religious woman or man a fulfilled and active life within her/his religious community or Diocese.

50600017