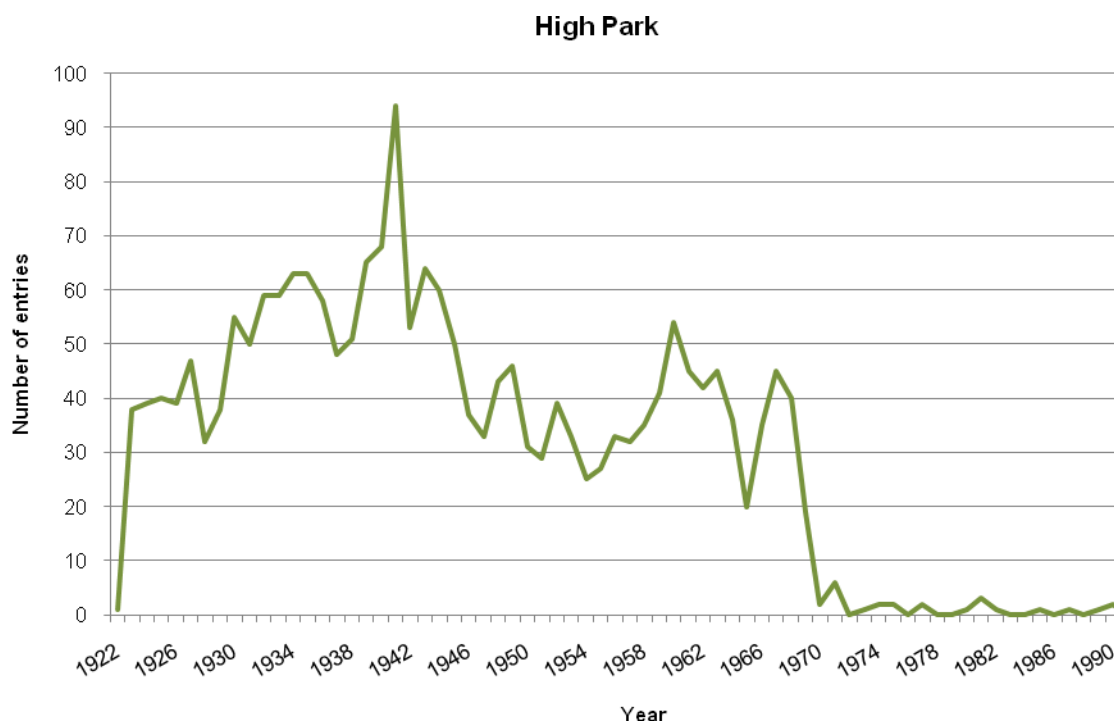
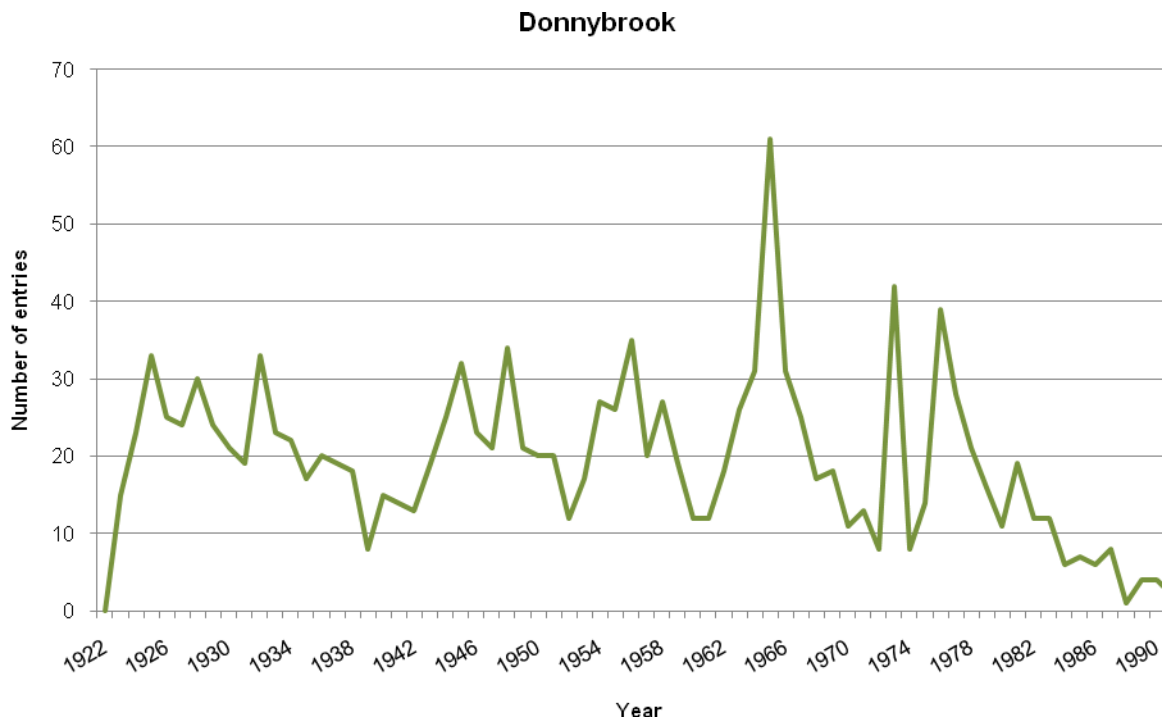
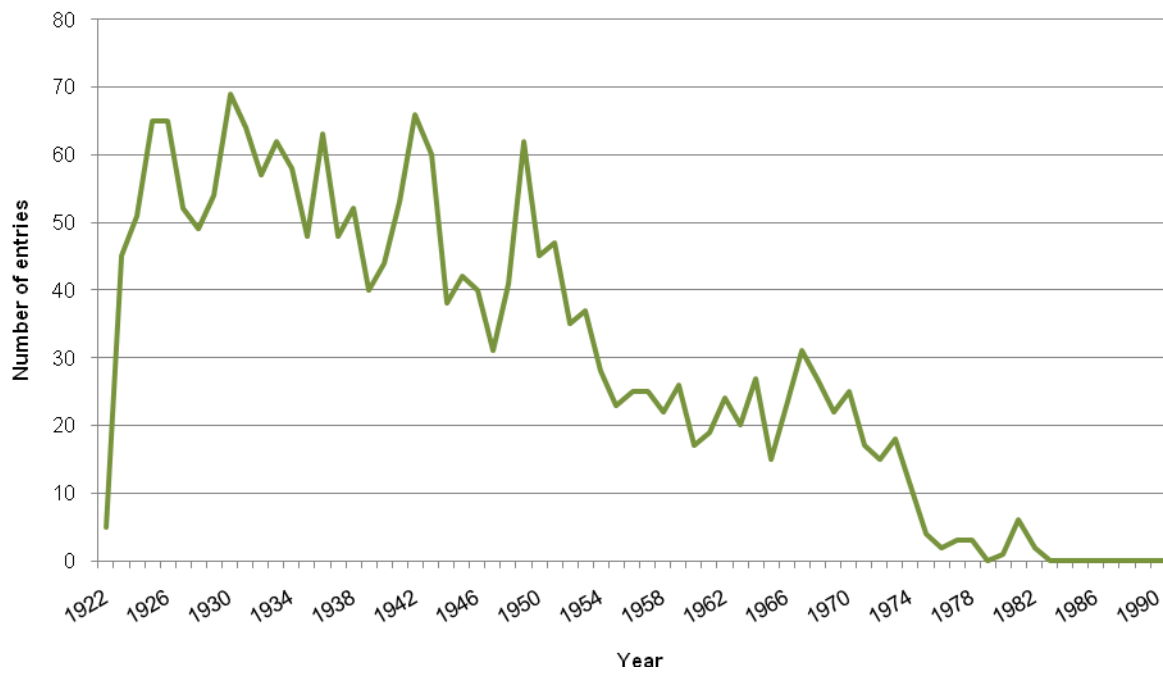


Additional statistical analysis in relation to the Magdalen Laundries

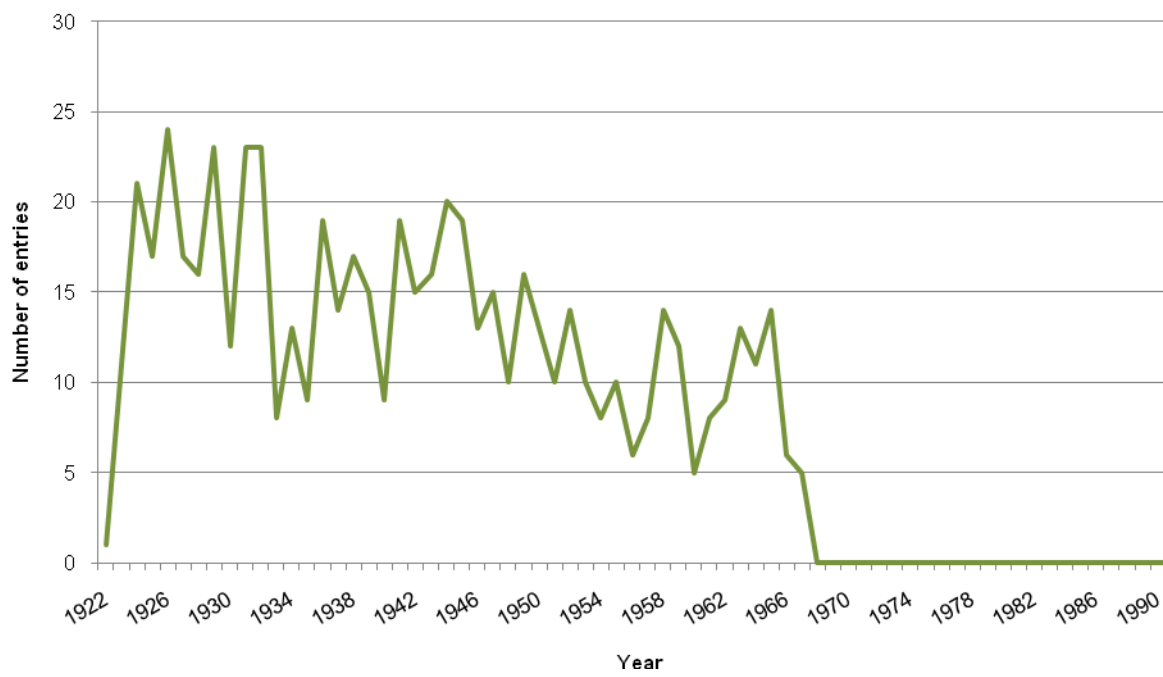
a. Number of entries for individual Magdalen Laundries by year



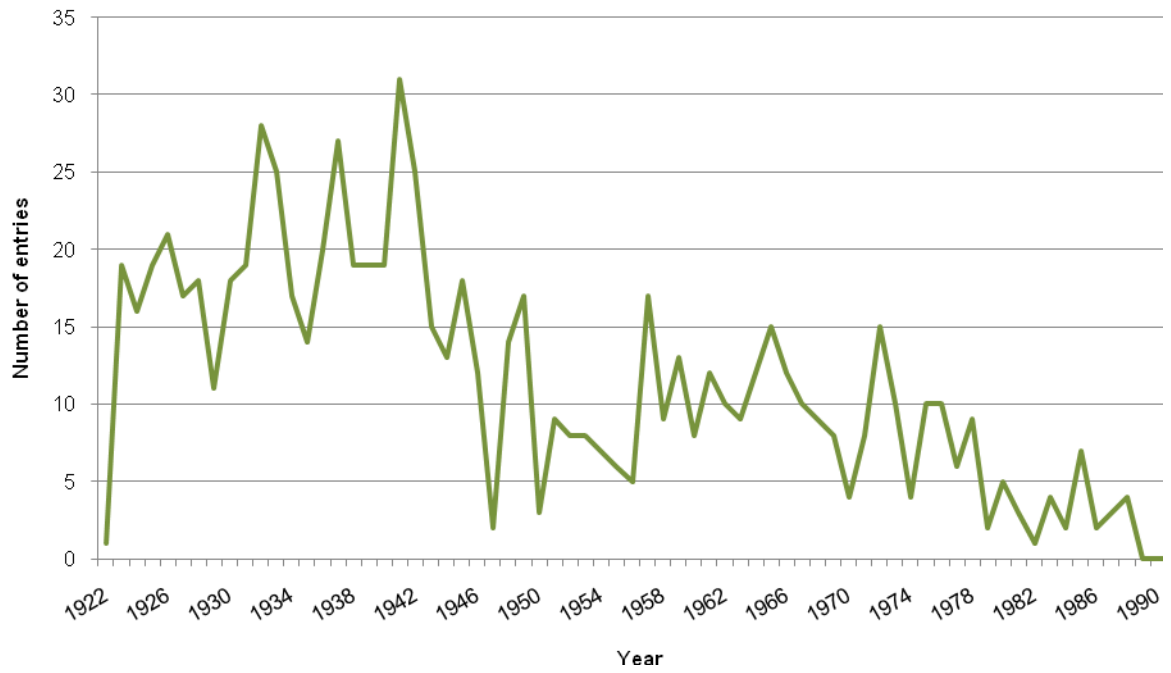
Limerick



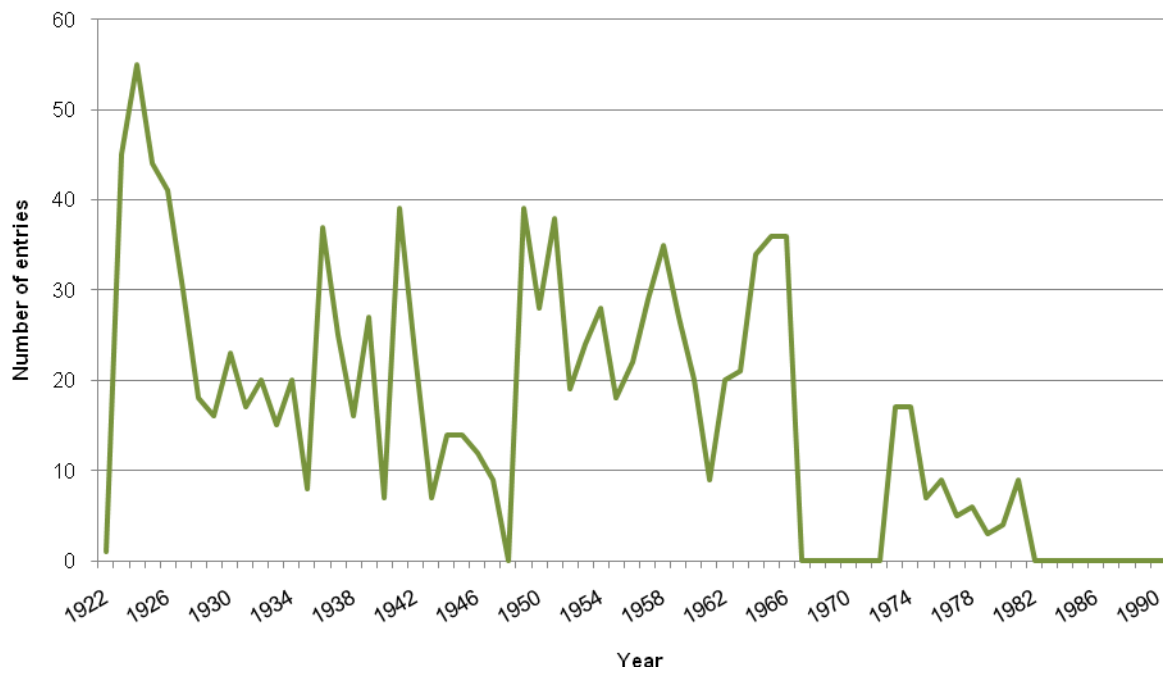
New Ross



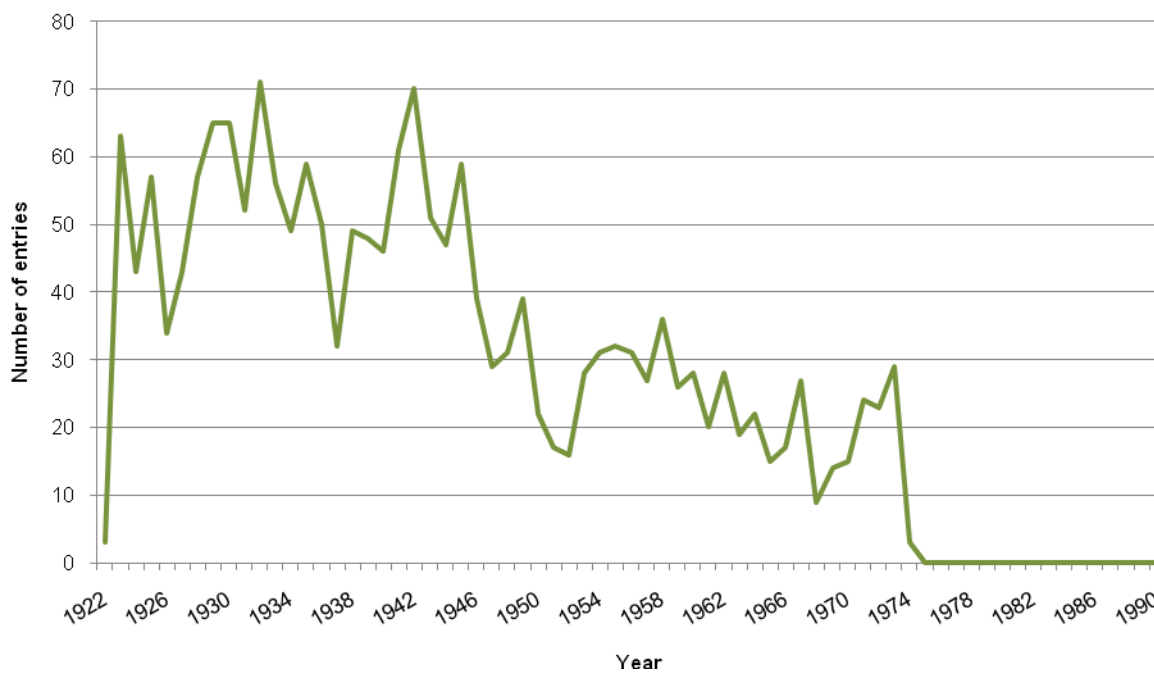
Peacock Lane, Cork



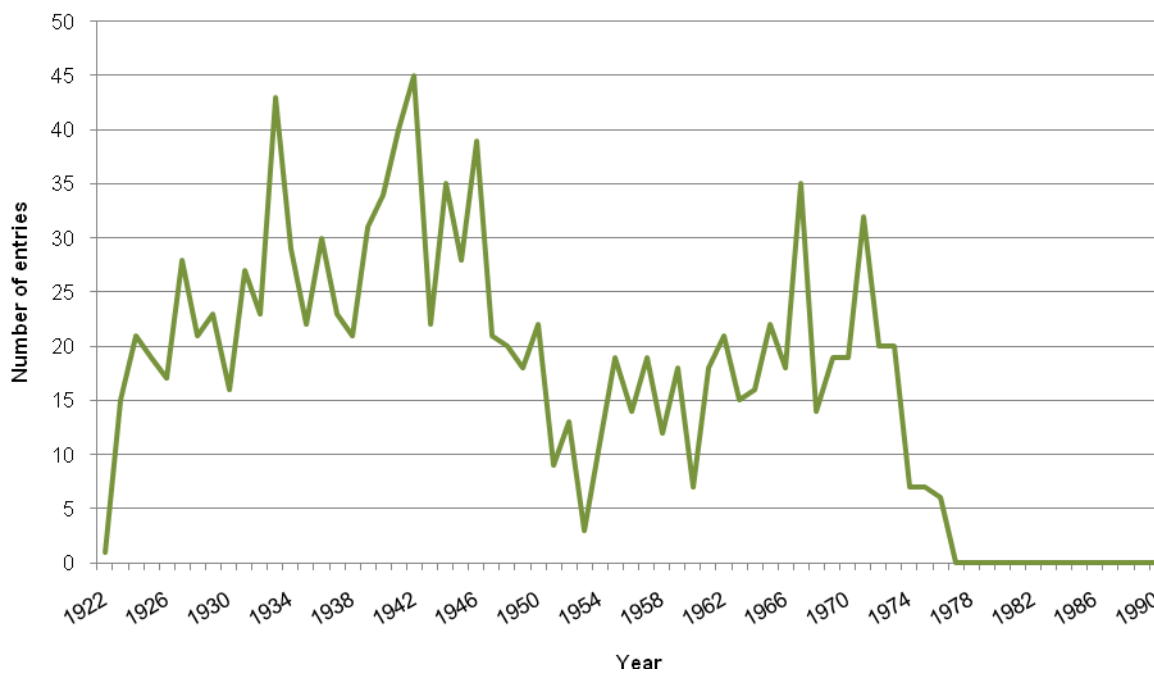
Sean McDermott St



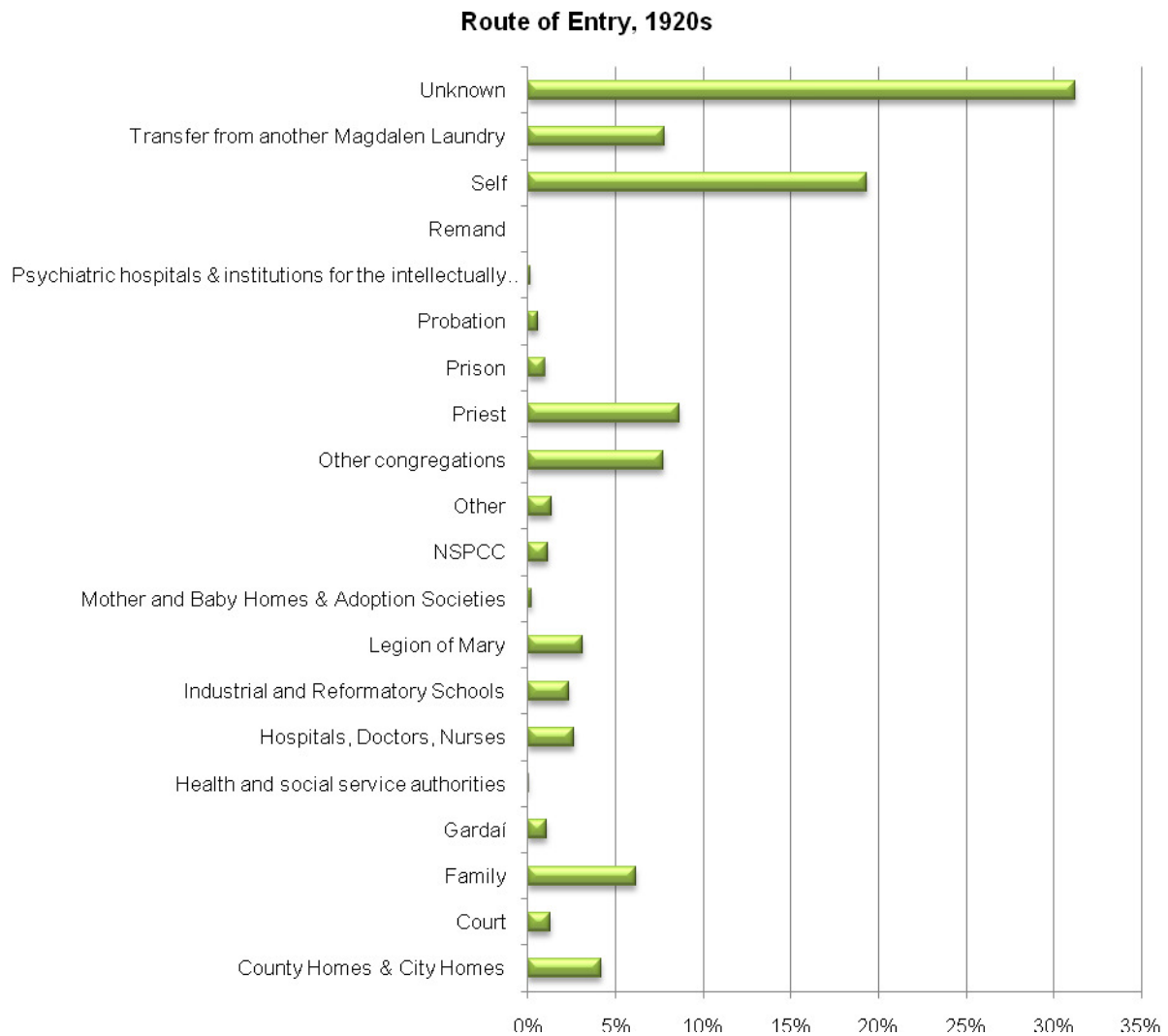
Sunday's Well, Cork



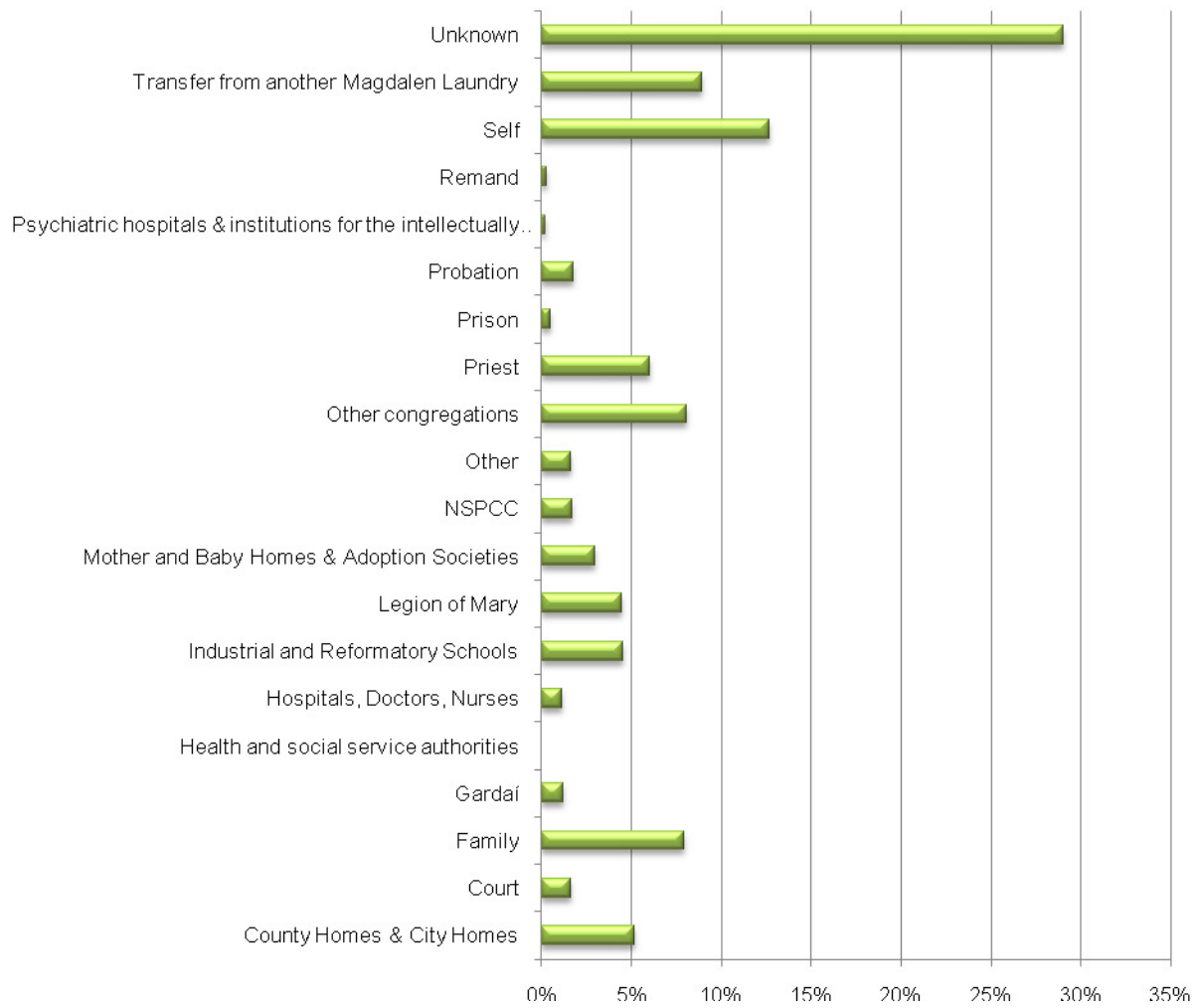
Waterford



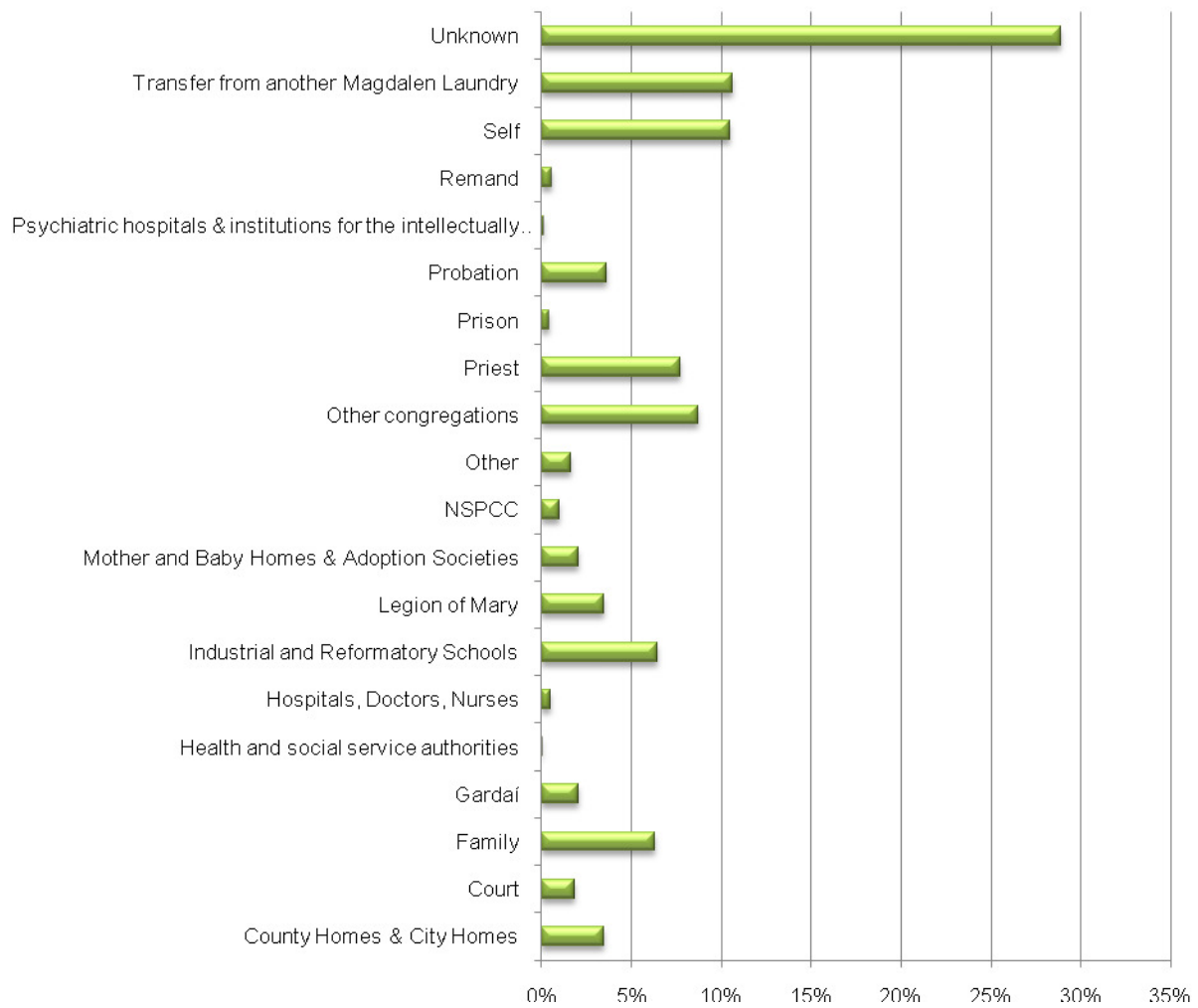
b. Routes of entry by decade



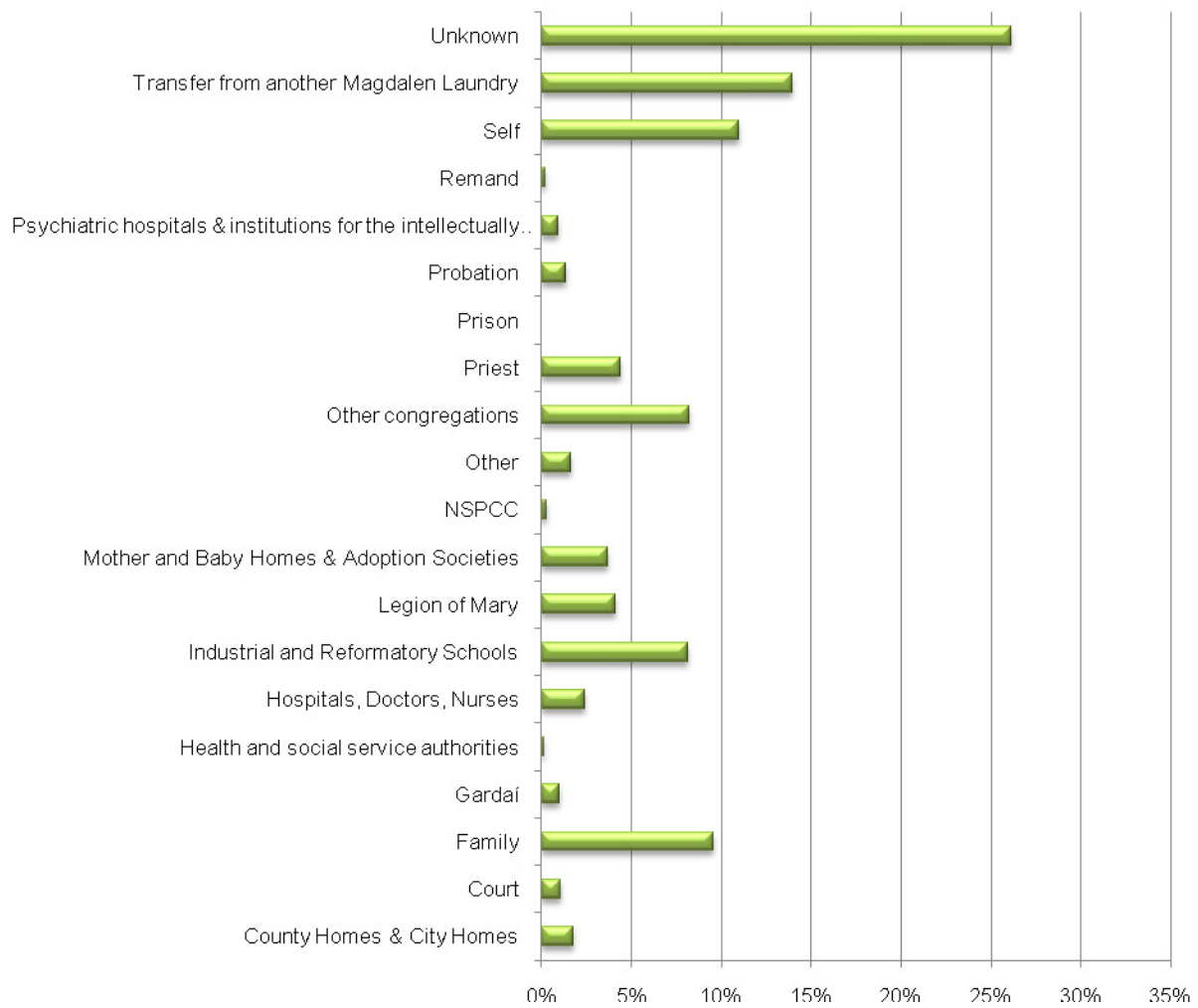
Route of Entry, 1930s



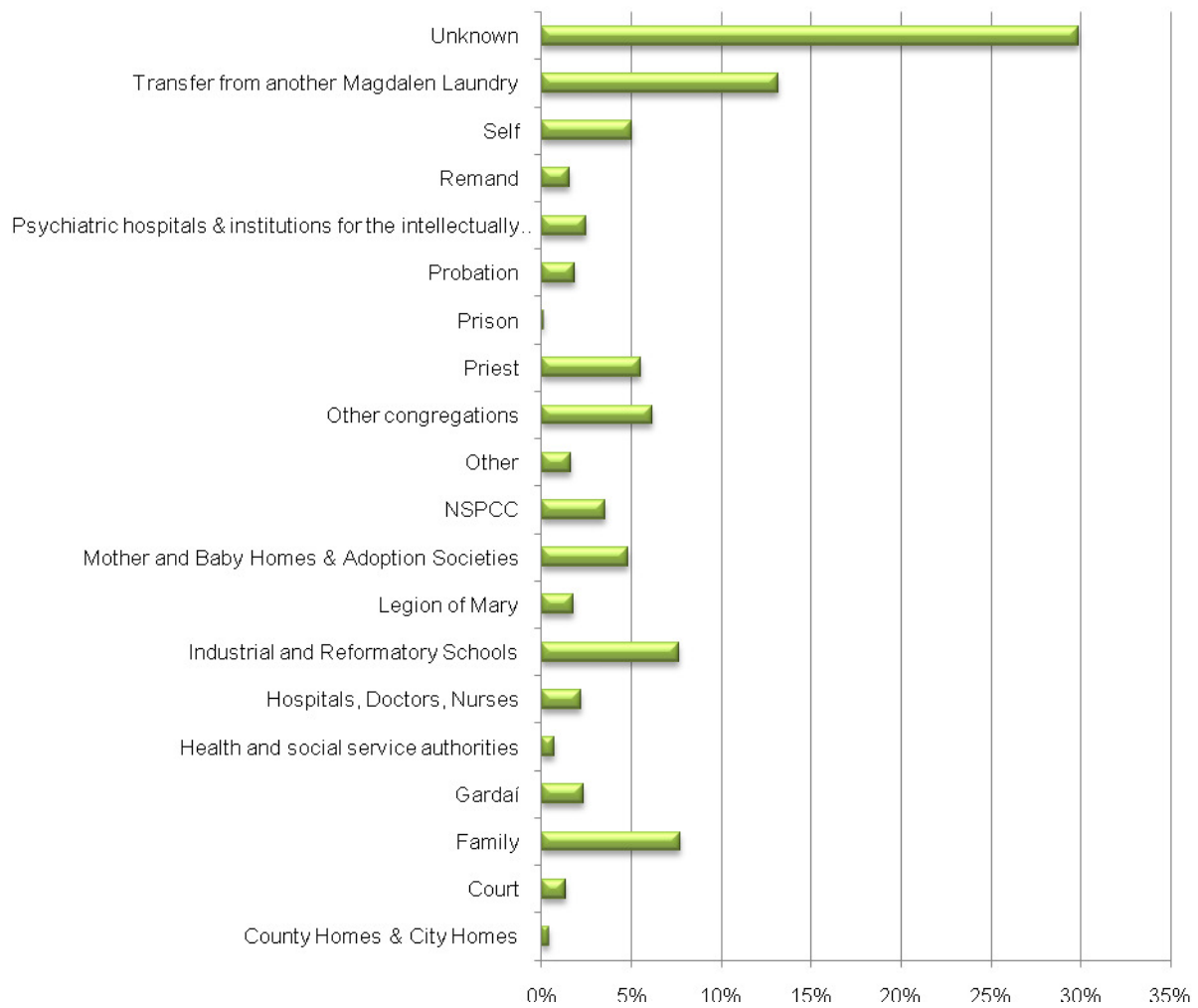
Route of Entry, 1940s



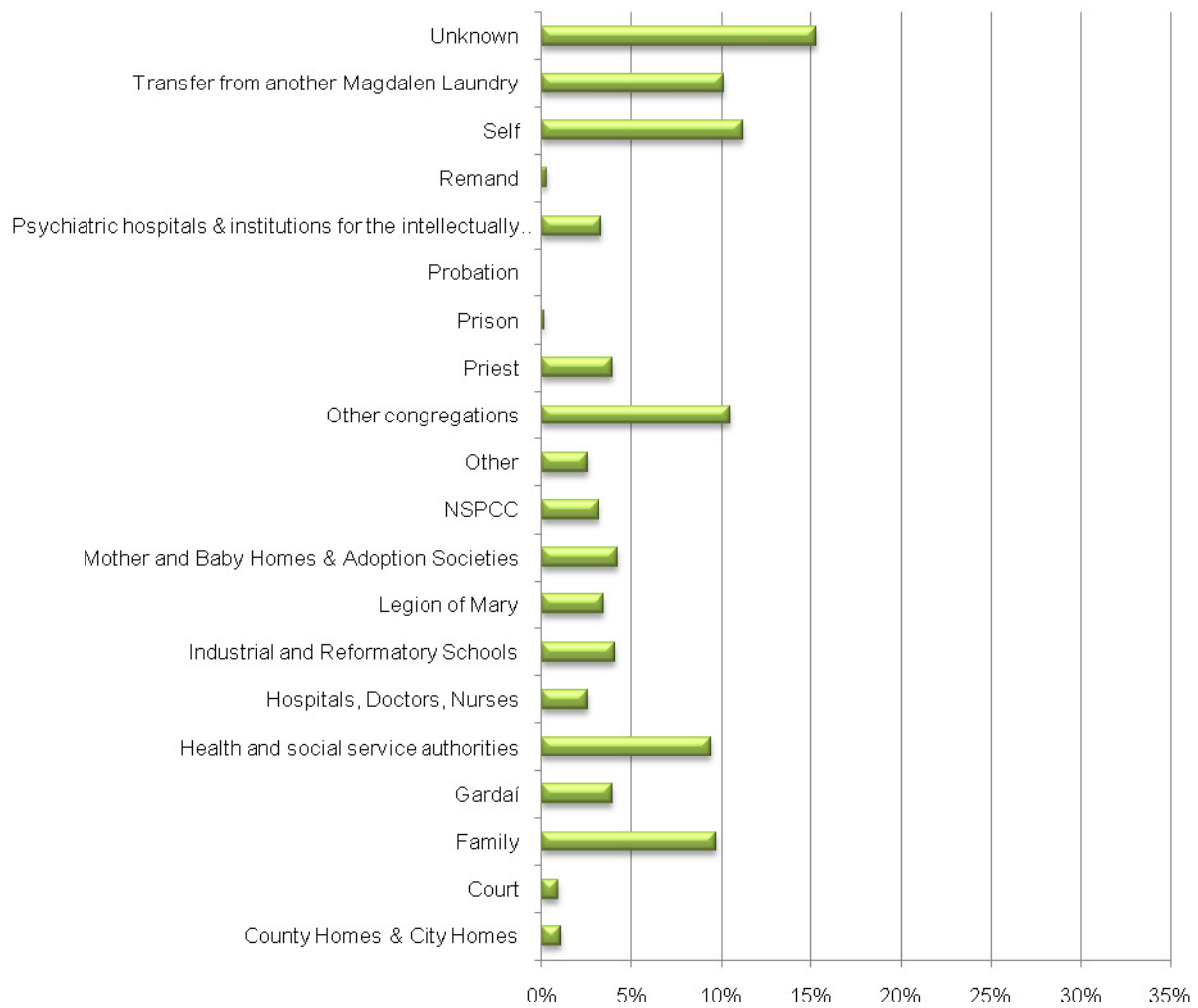
Route of Entry, 1950s



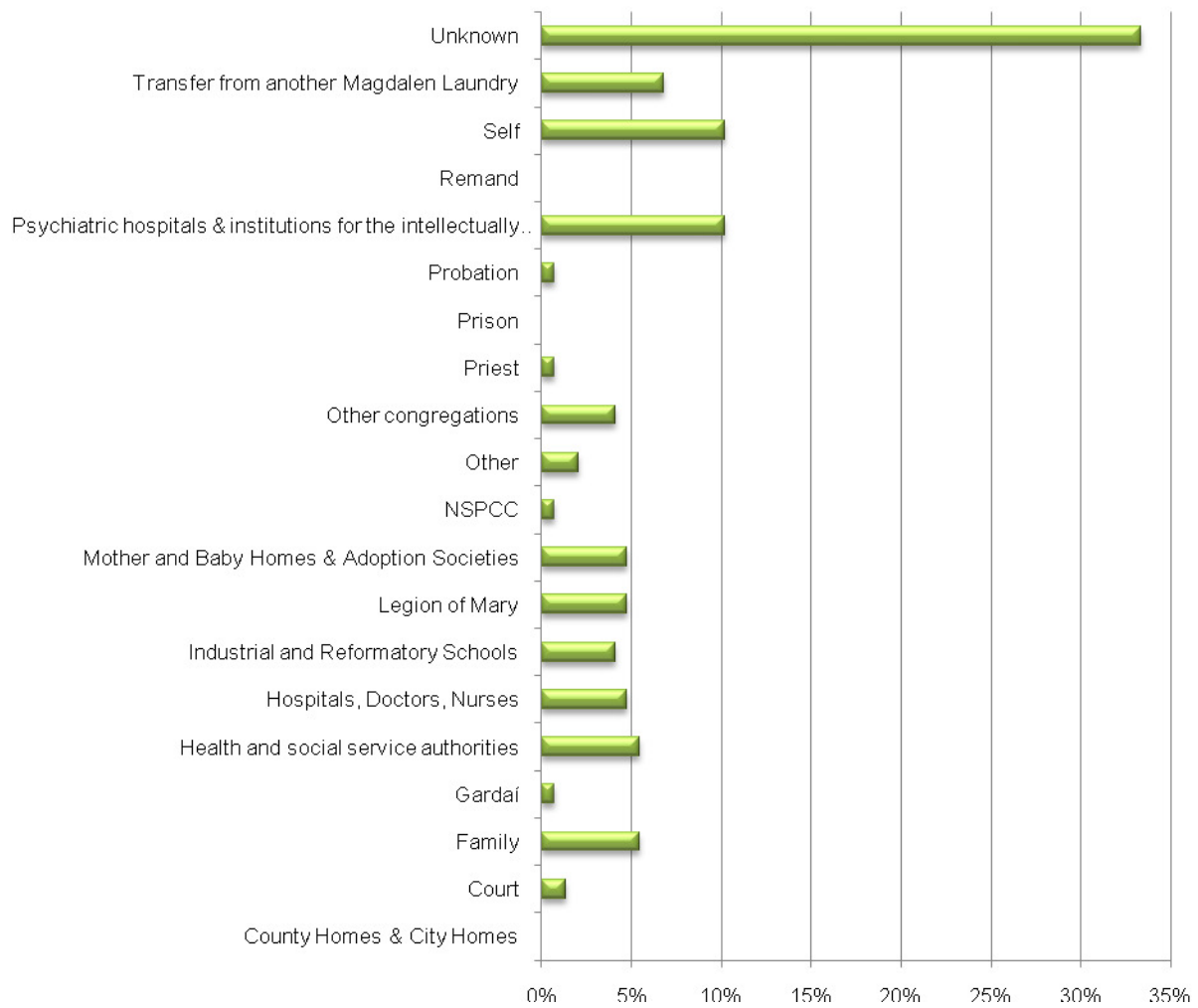
Route of Entry, 1960s



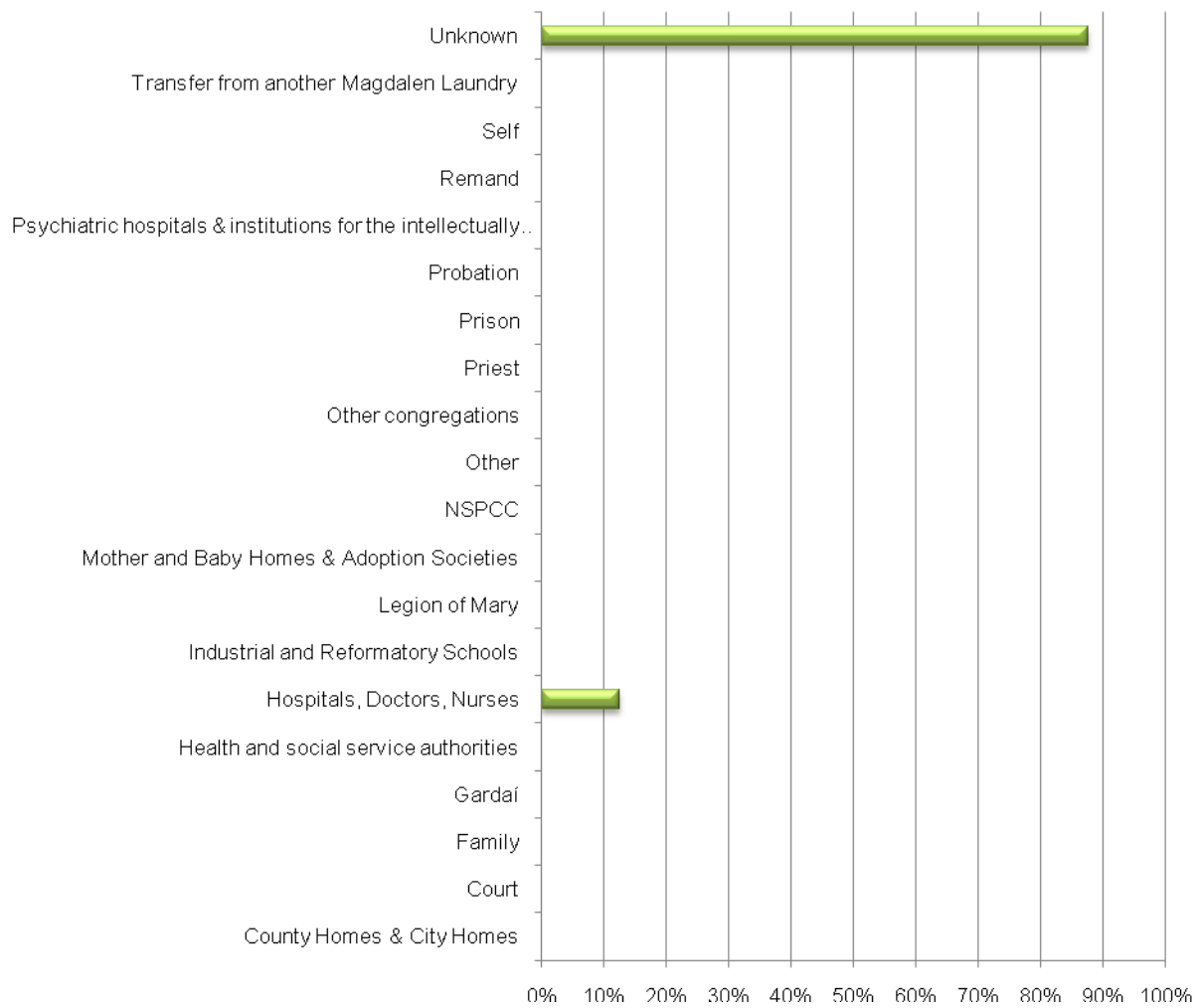
Route of Entry, 1970s



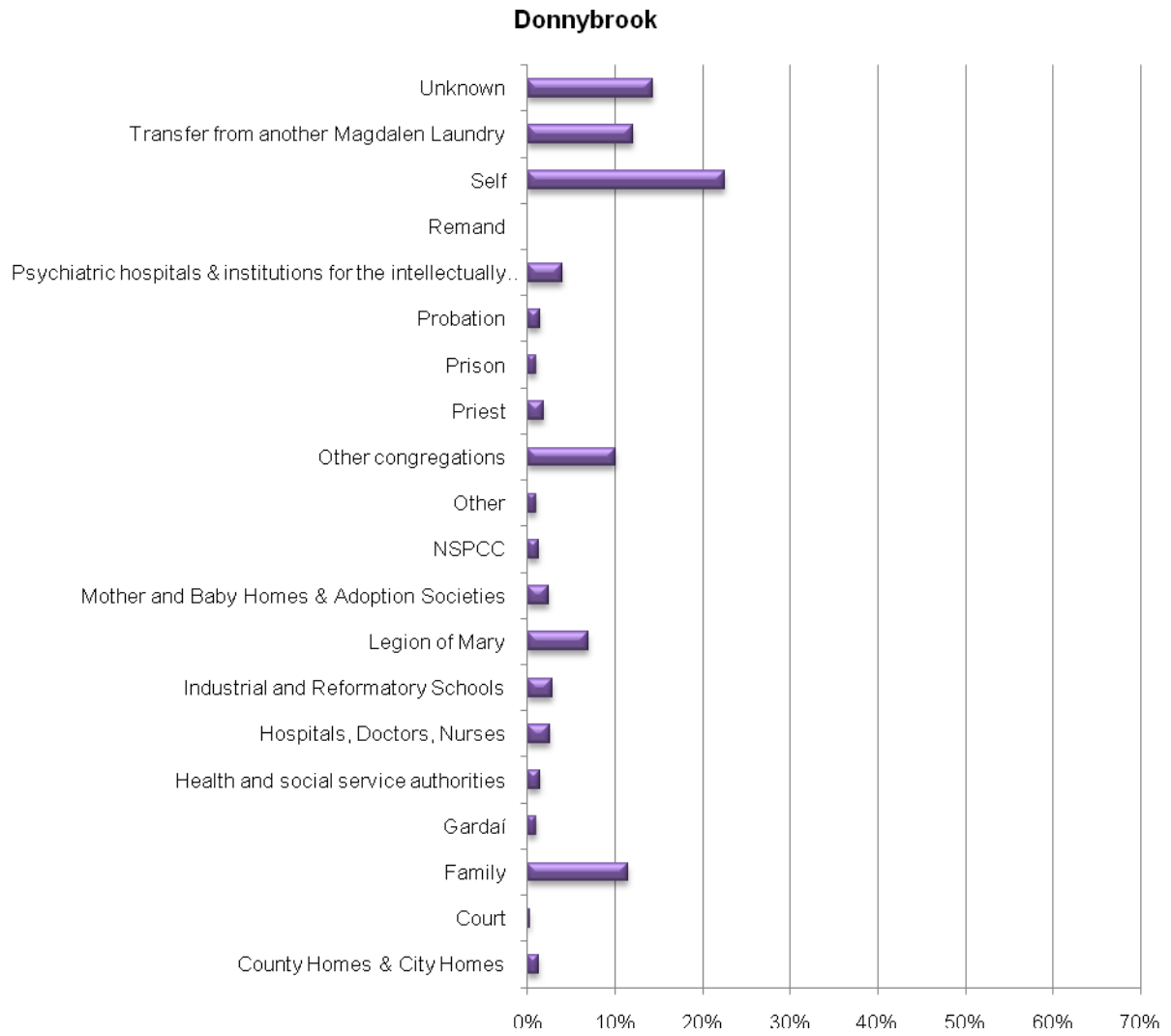
Route of Entry, 1980s



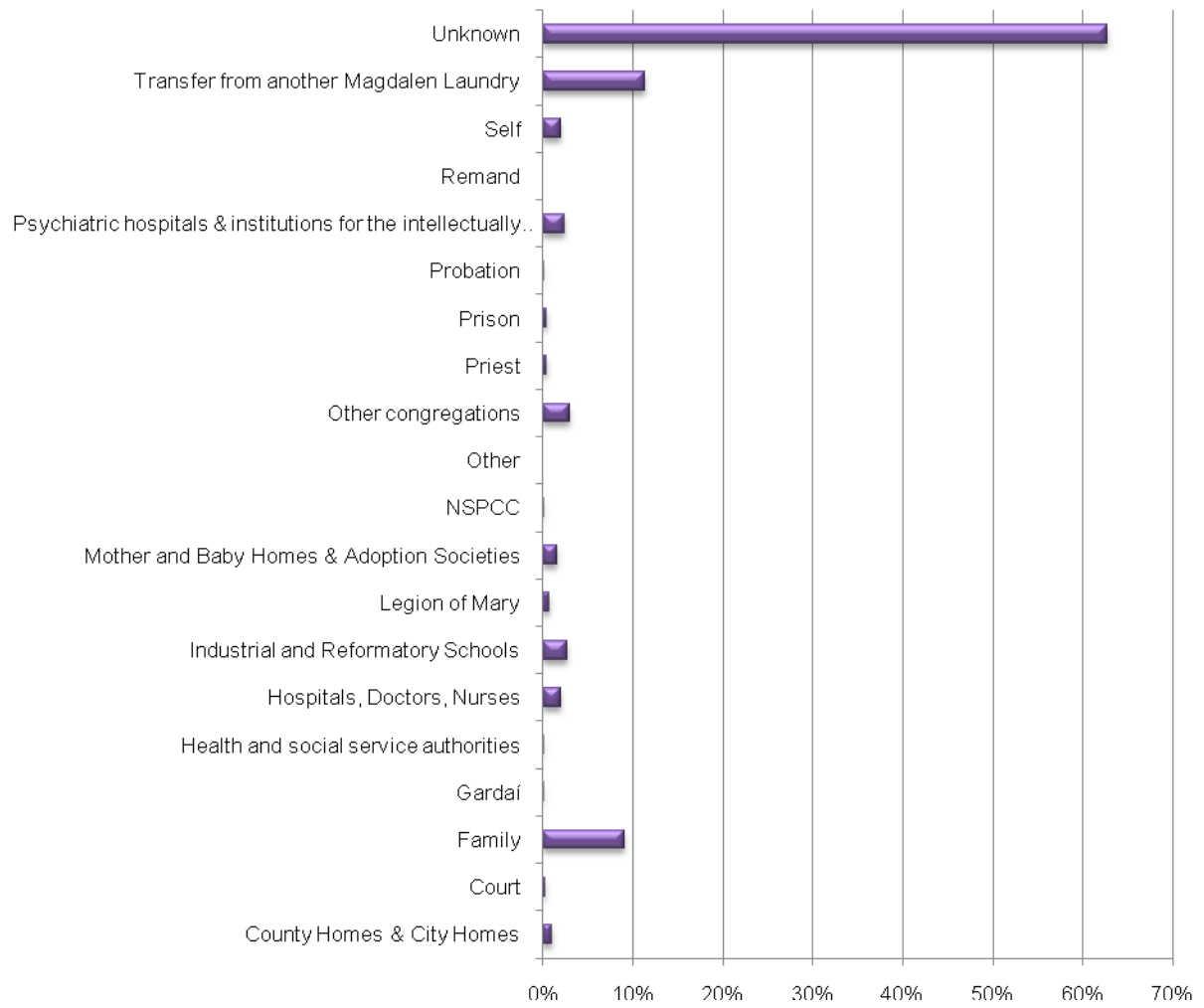
Route of Entry, 1990s



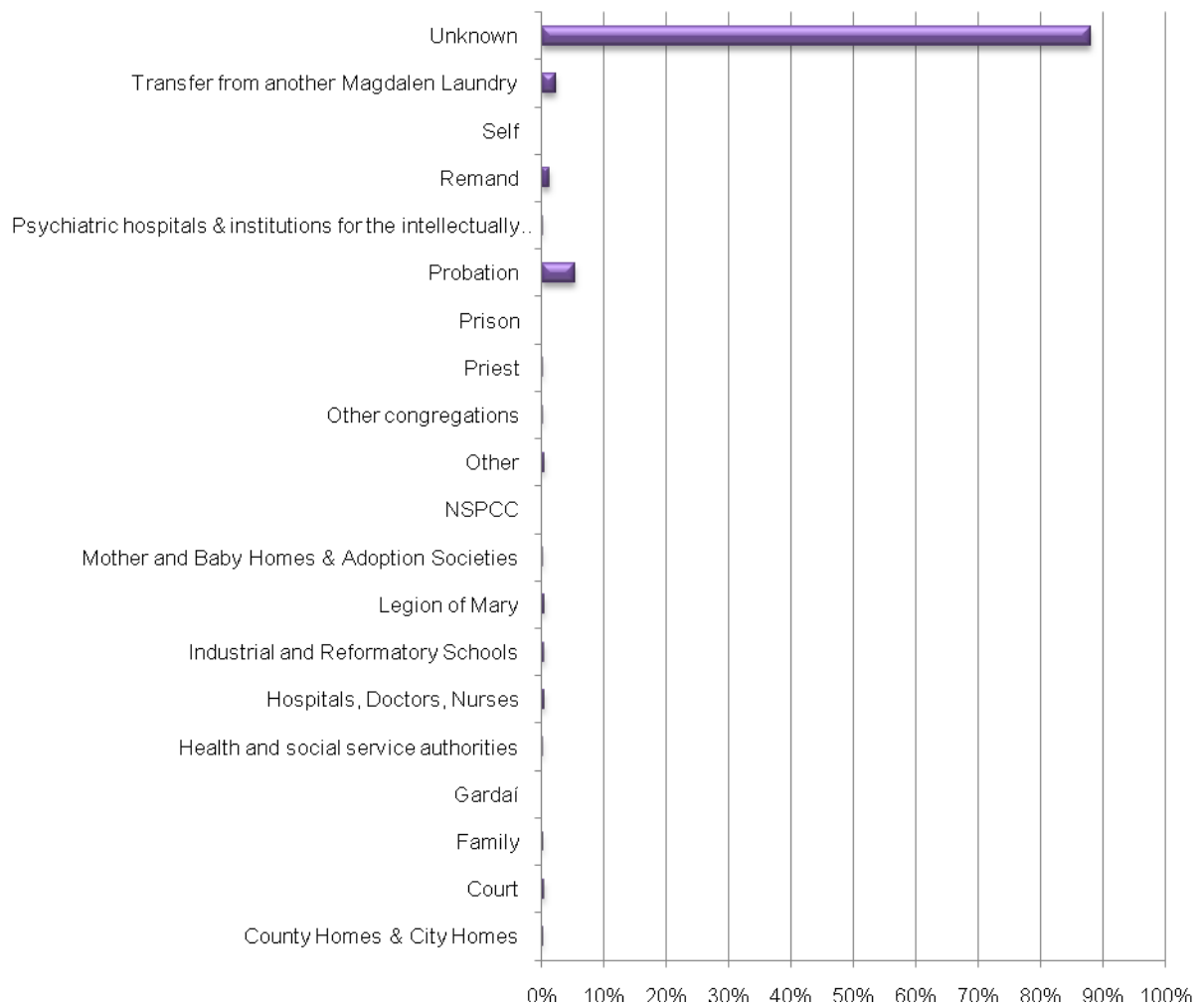
c. Routes of entry for individual Magdalen Laundries



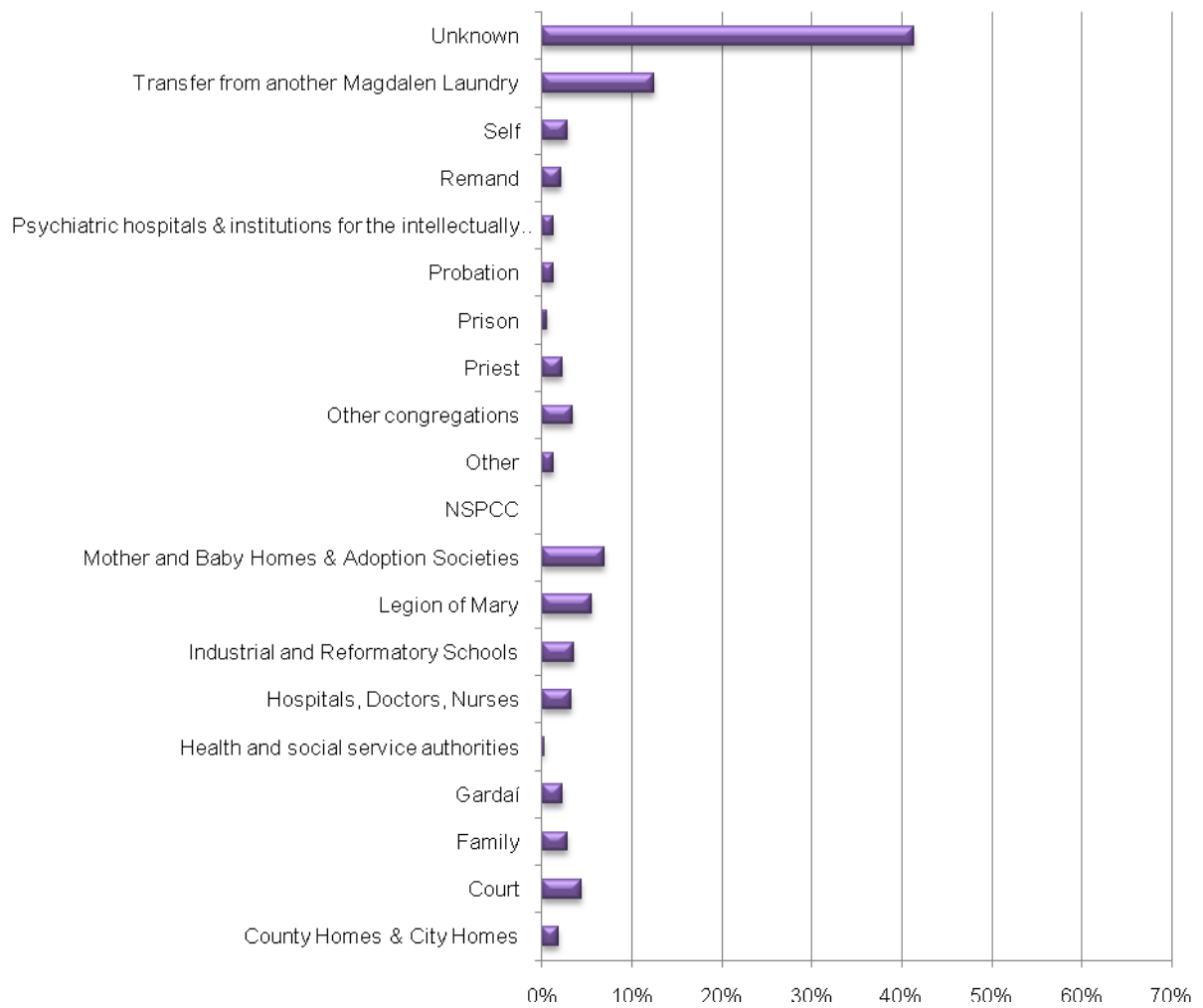
Peacock Lane



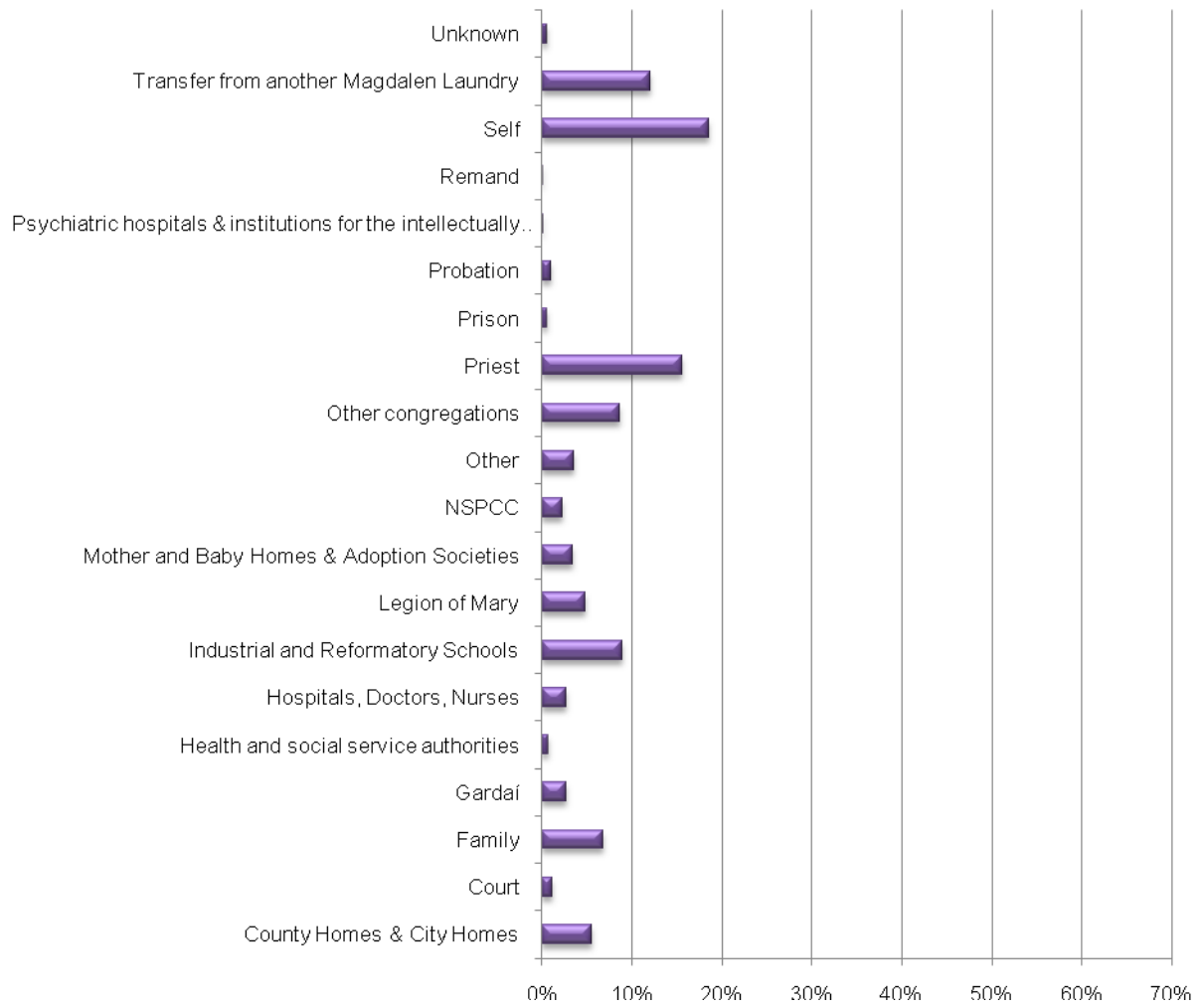
High Park

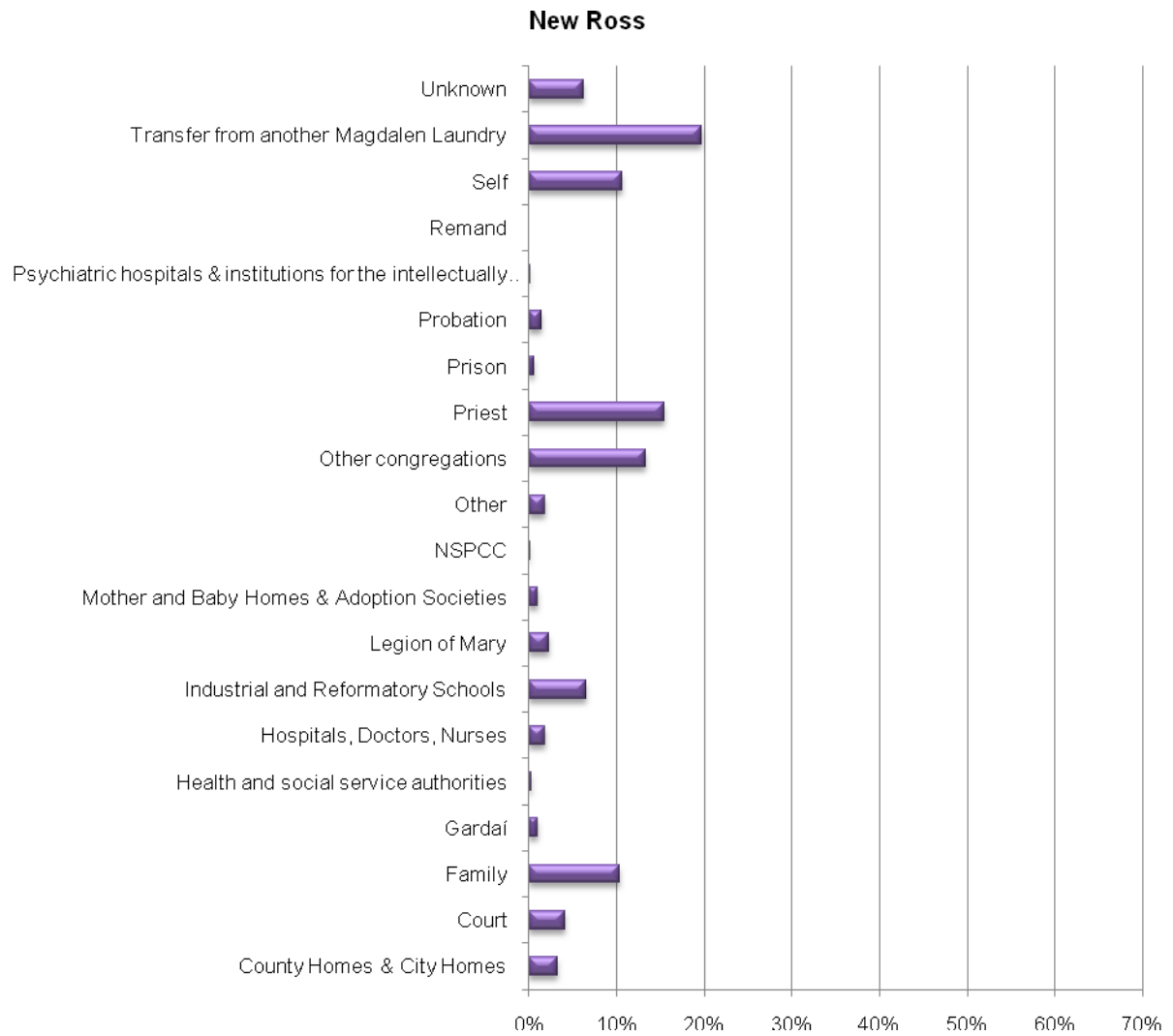


Sean McDermott St

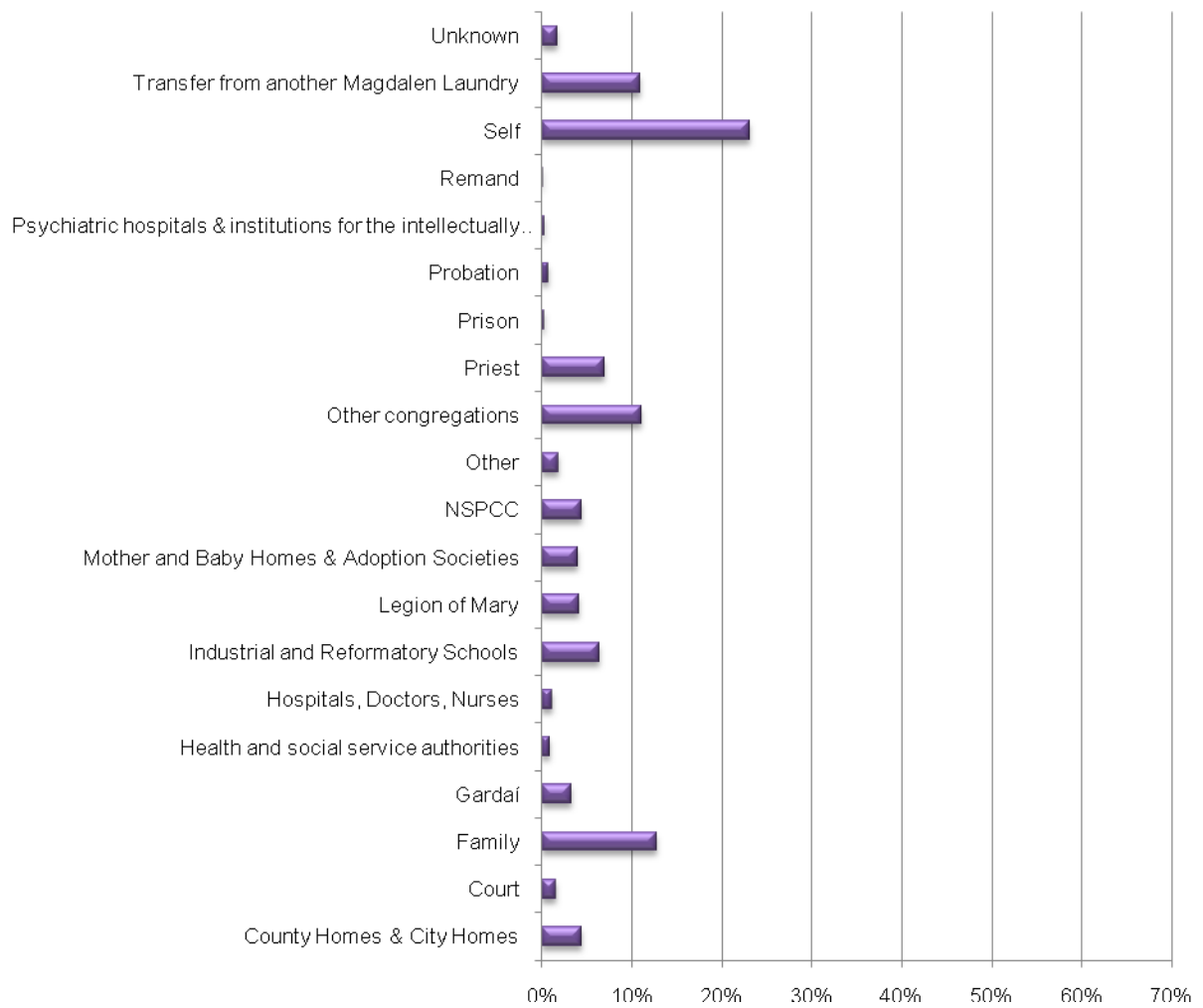


Limerick

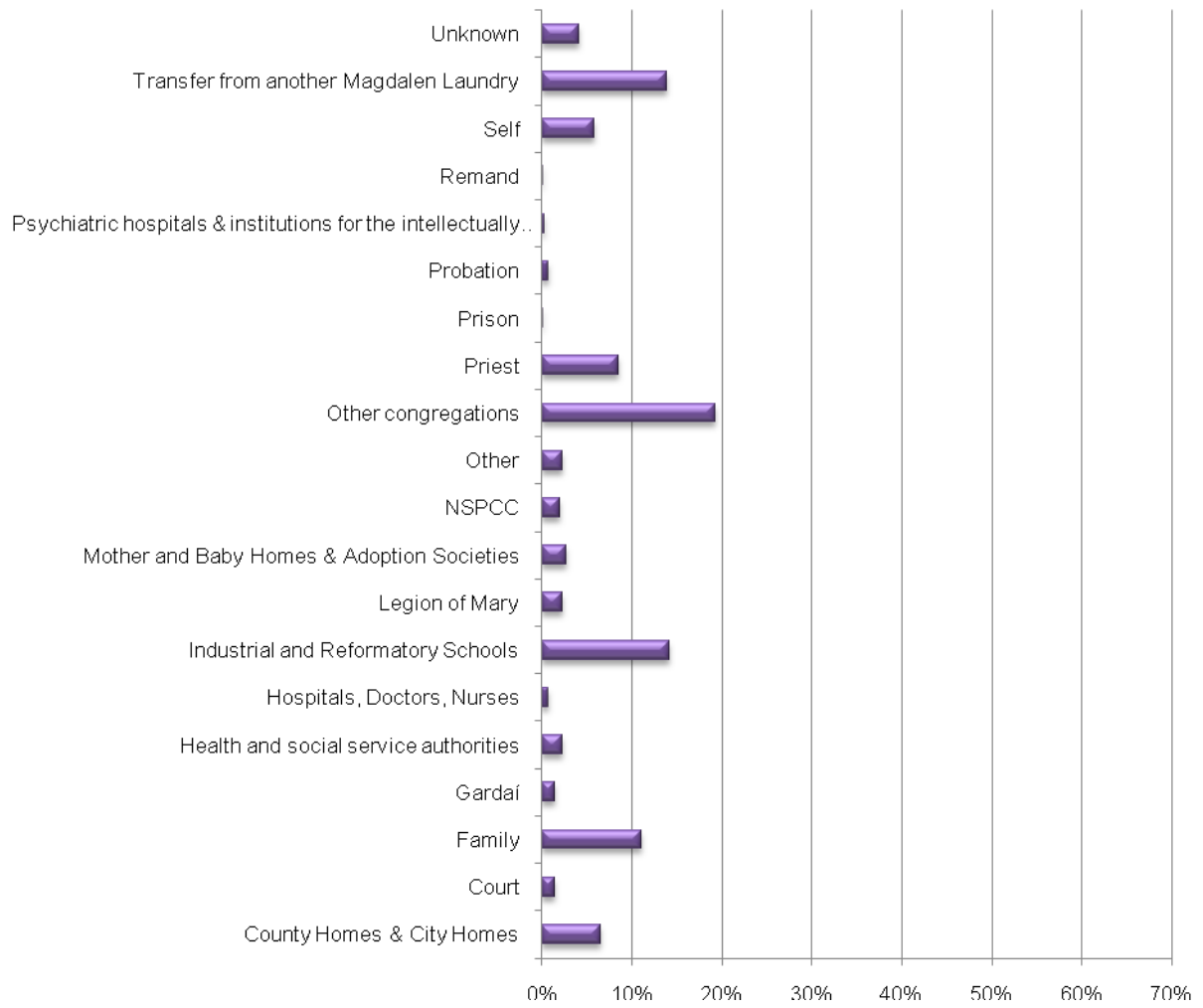




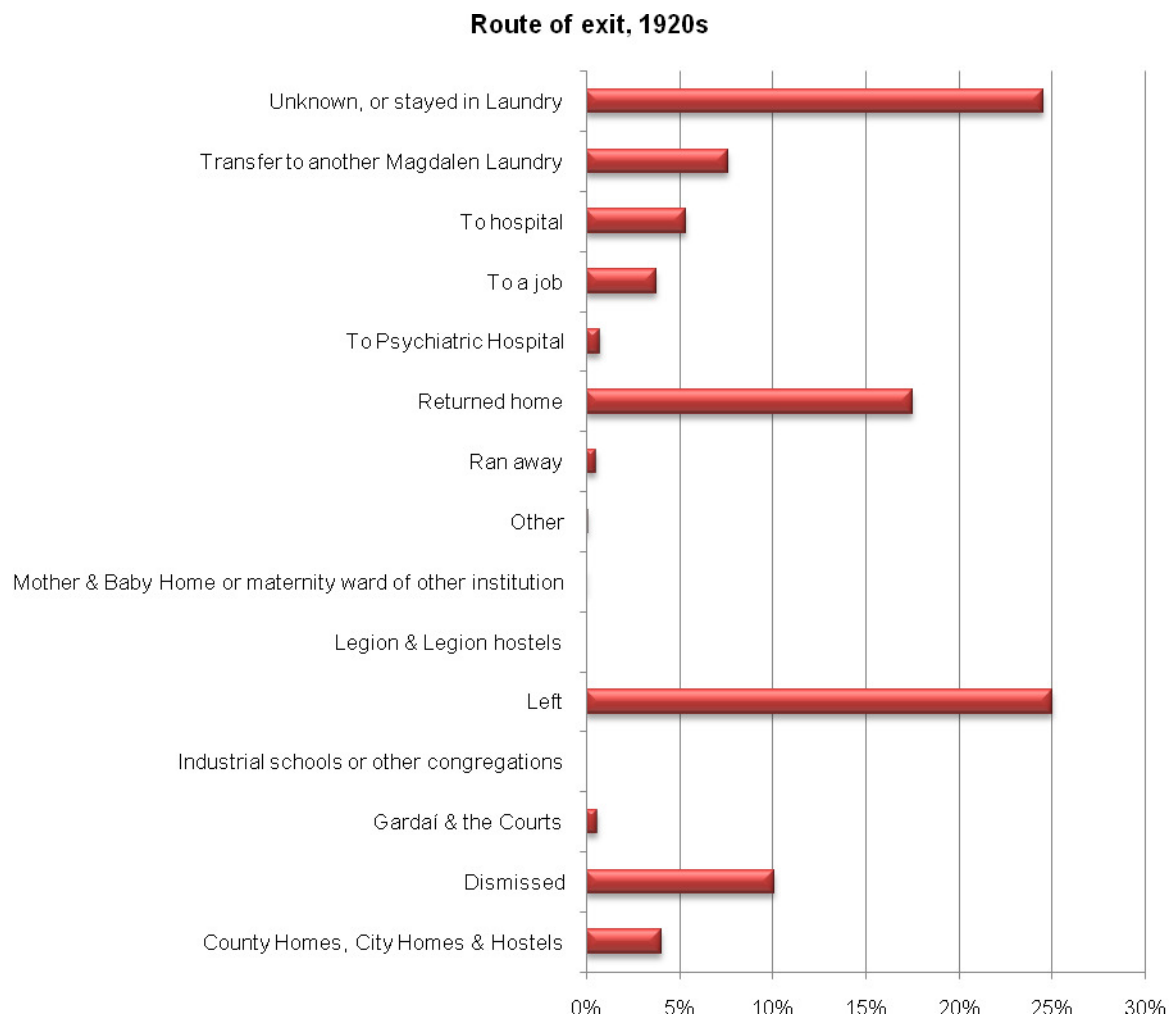
Sunday's Well



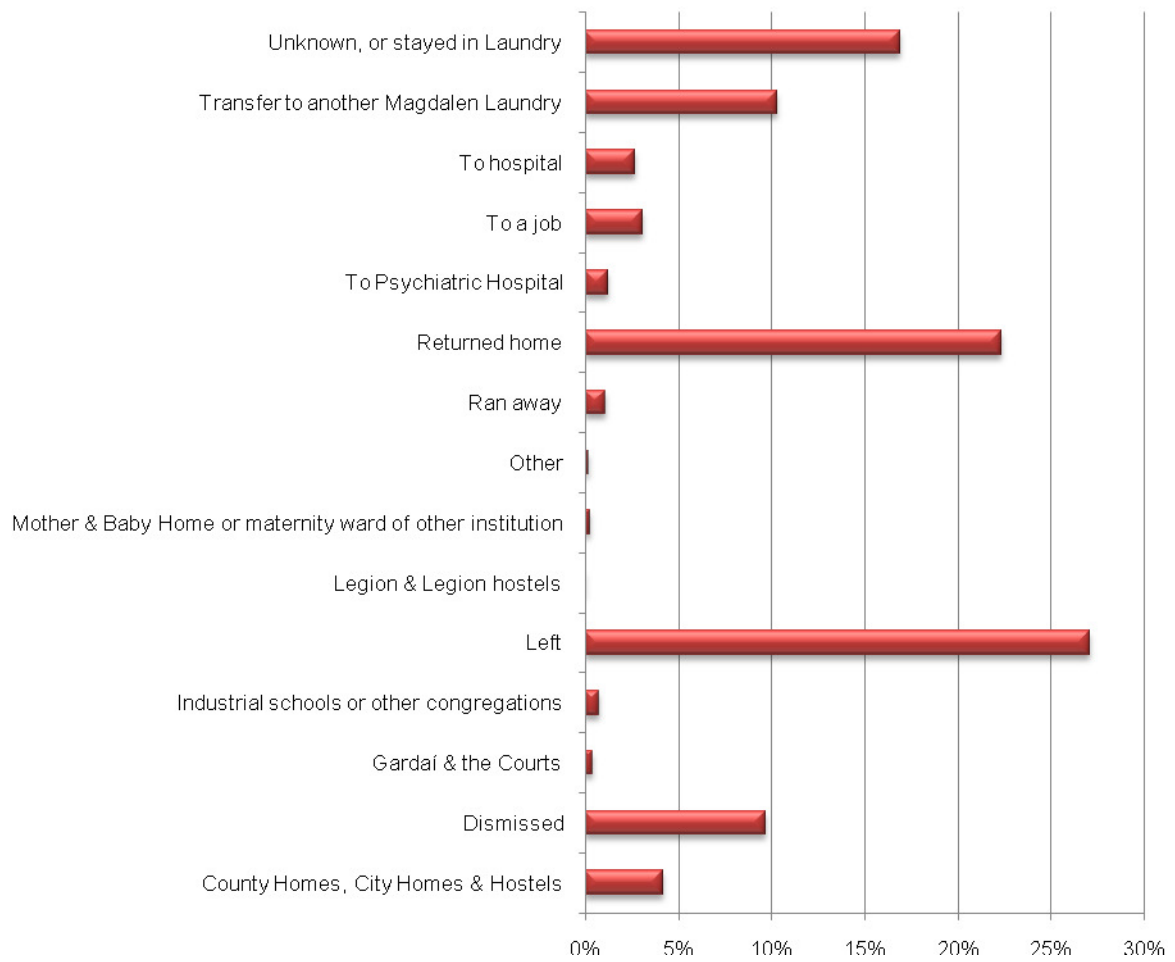
Waterford



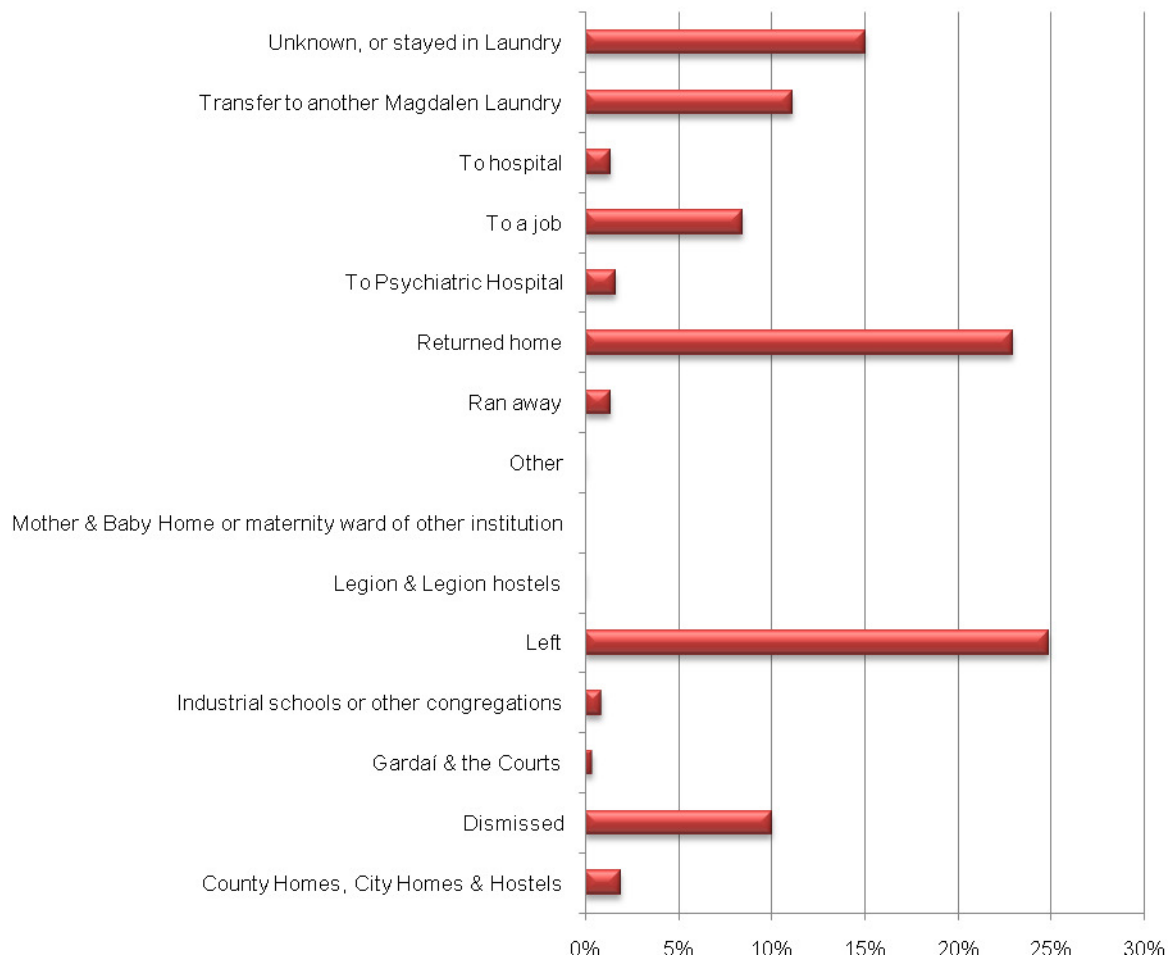
d. Routes of exit by decade



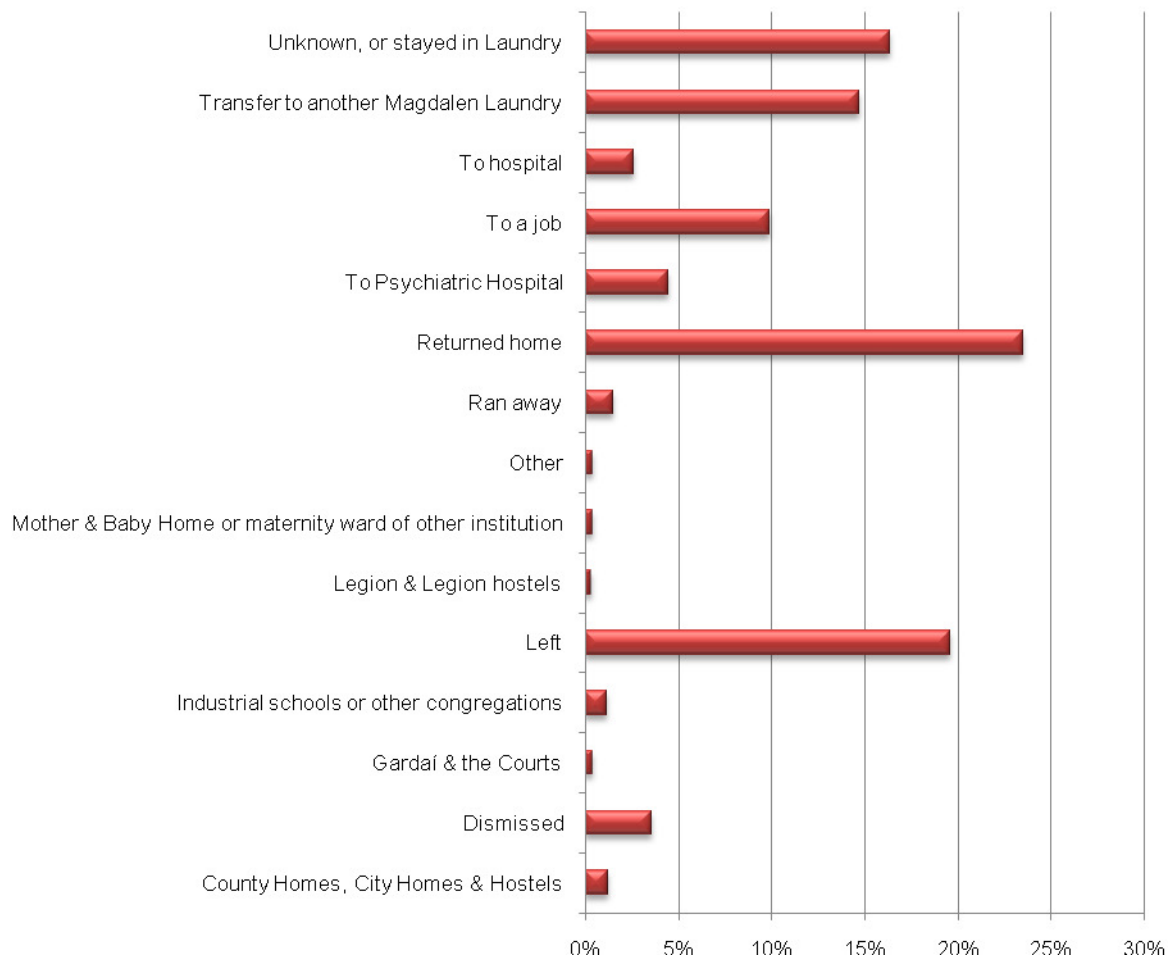
Route of exit, 1930s



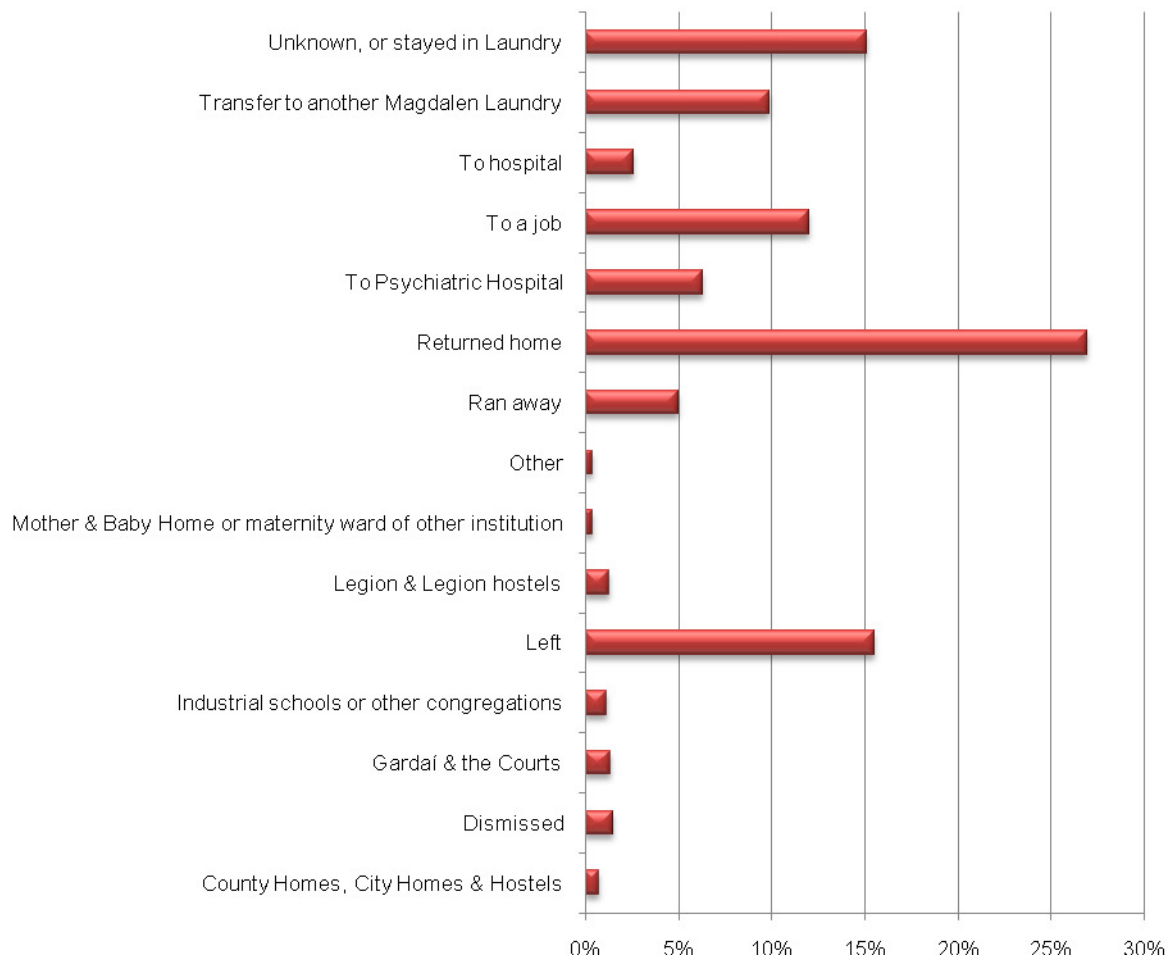
Route of exit, 1940s



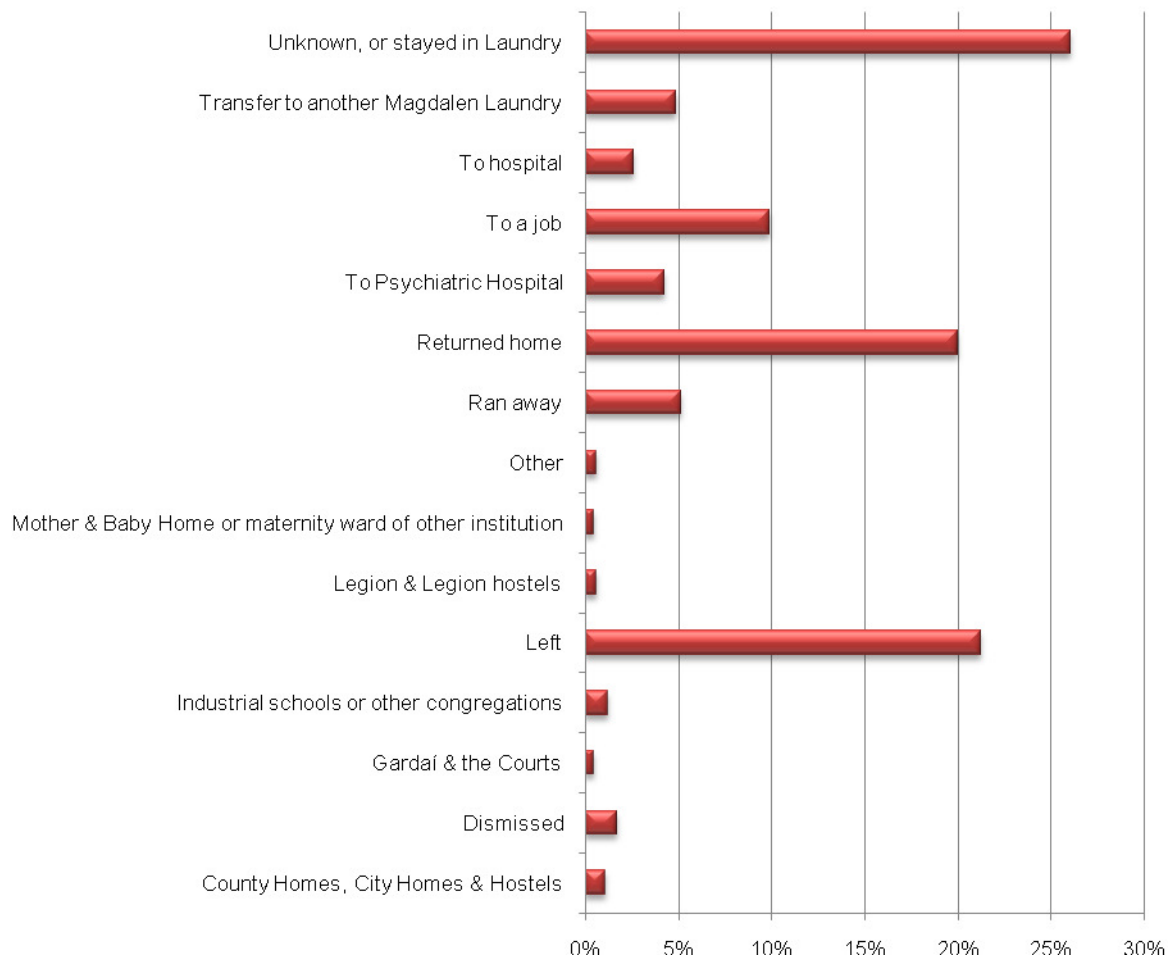
Route of exit, 1950s



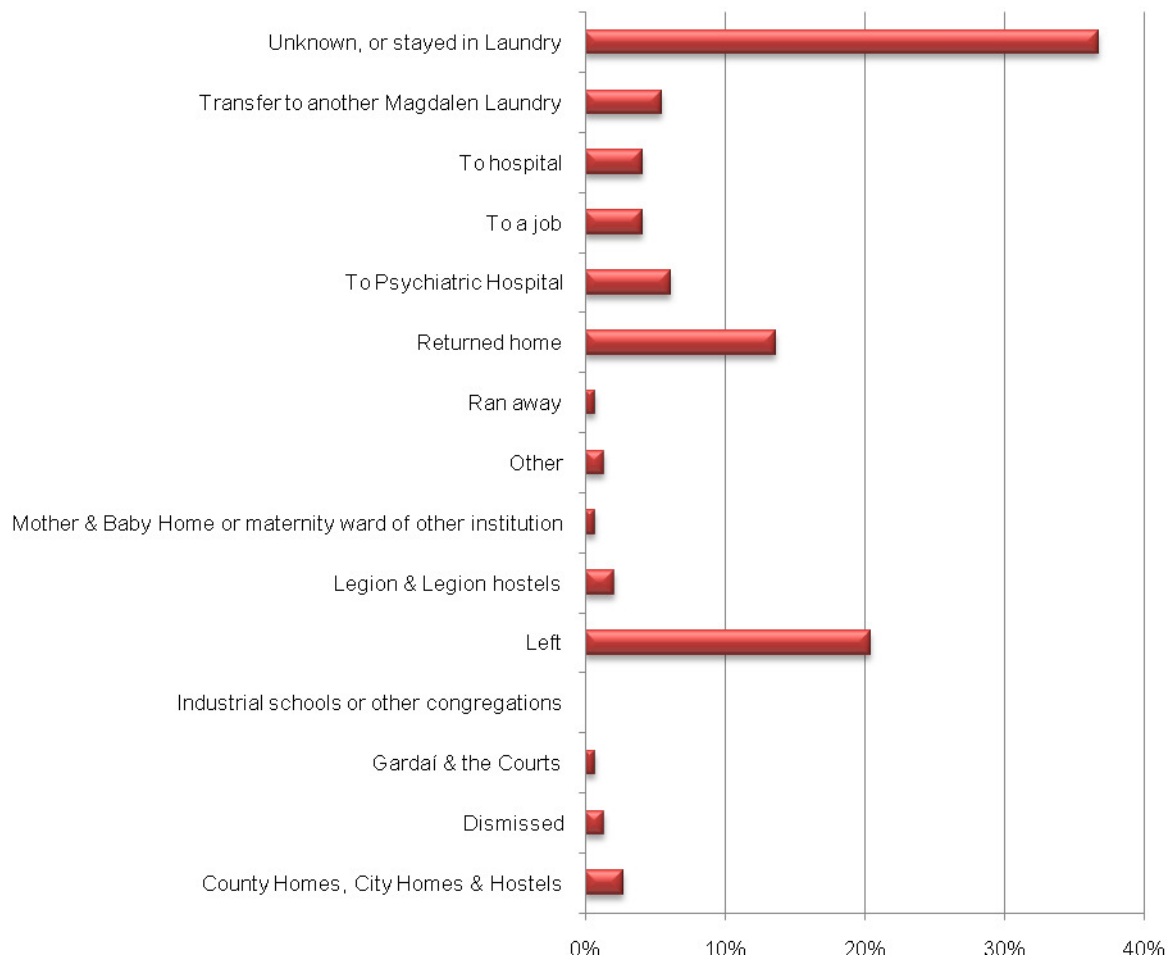
Route of exit, 1960s



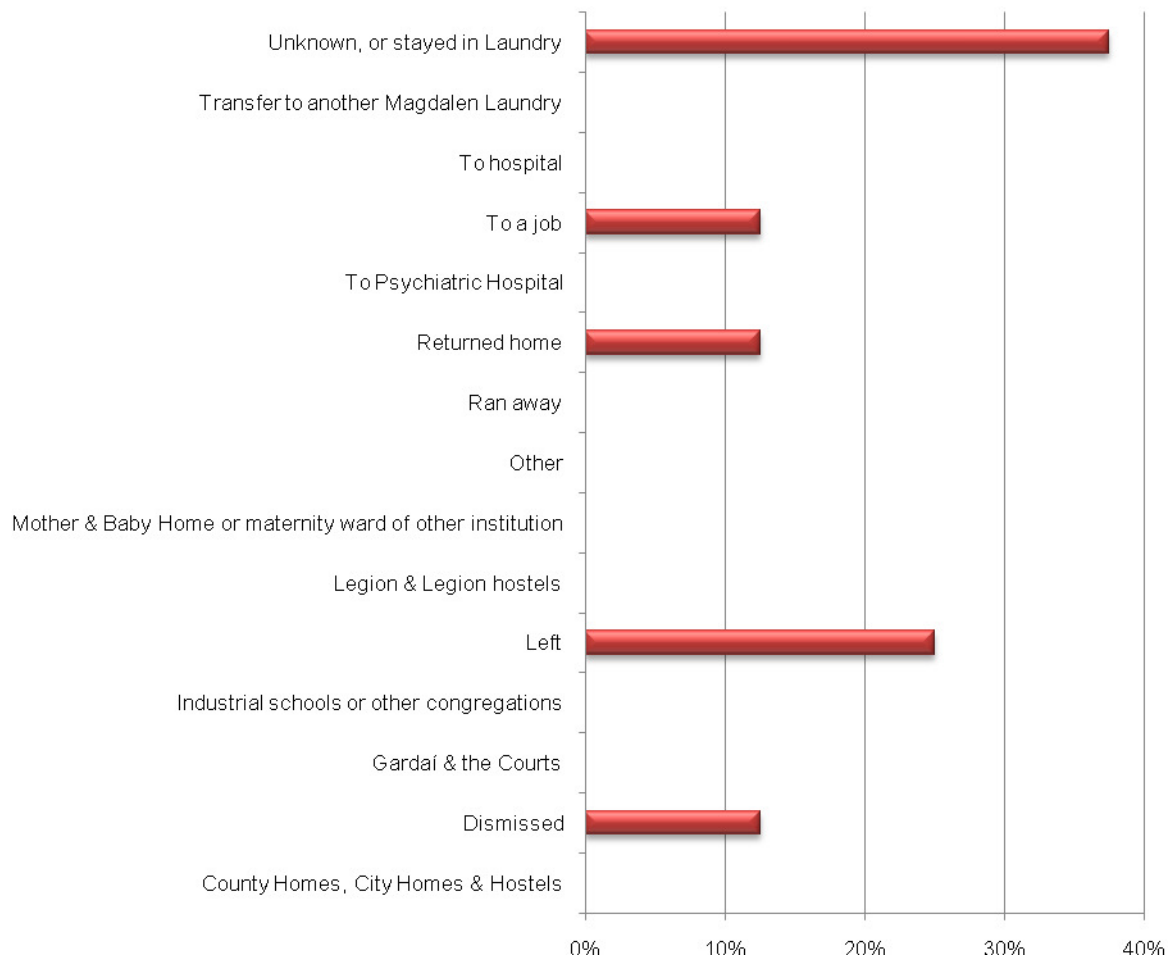
Route of exit, 1970s



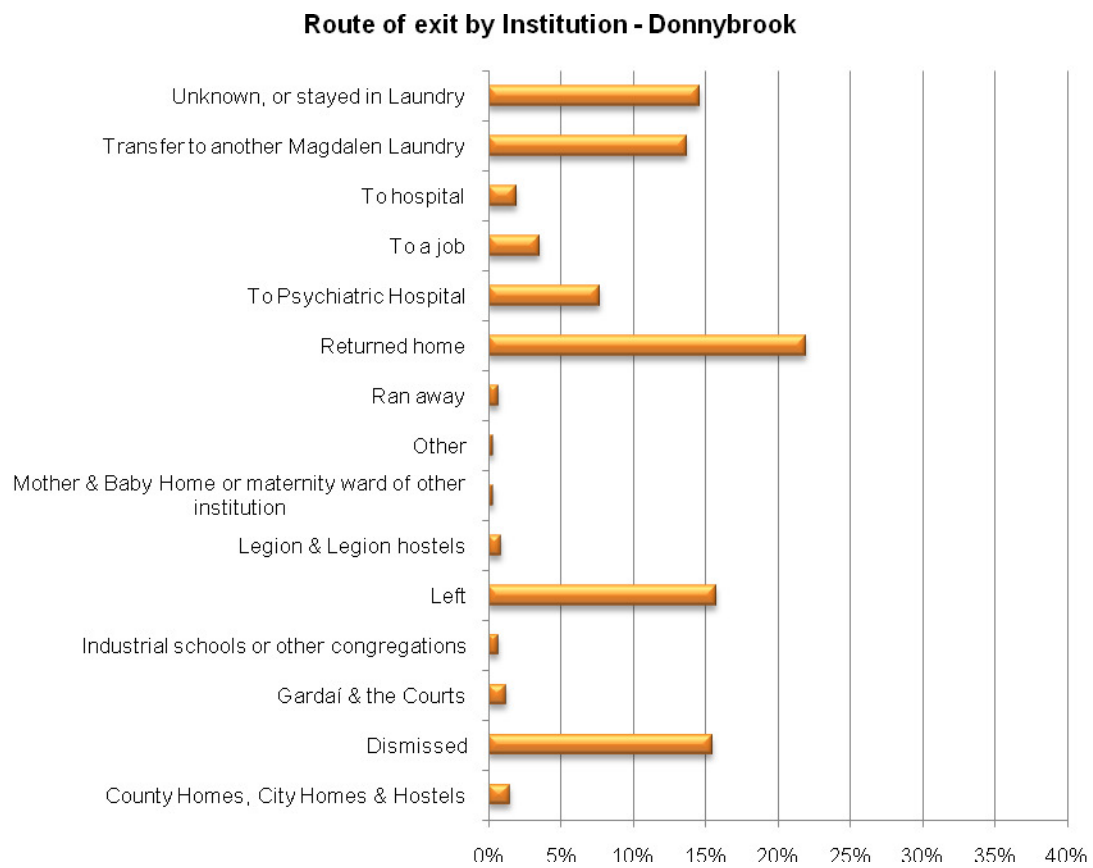
Route of exit, 1980s



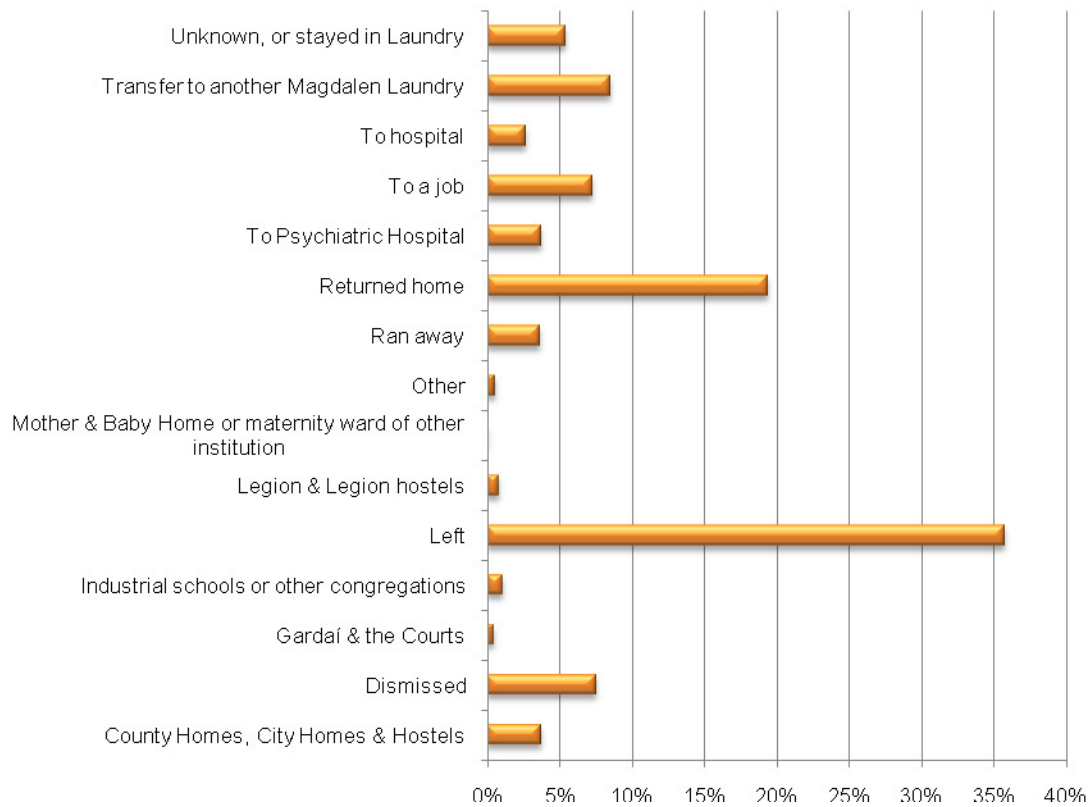
Route of exit, 1990s



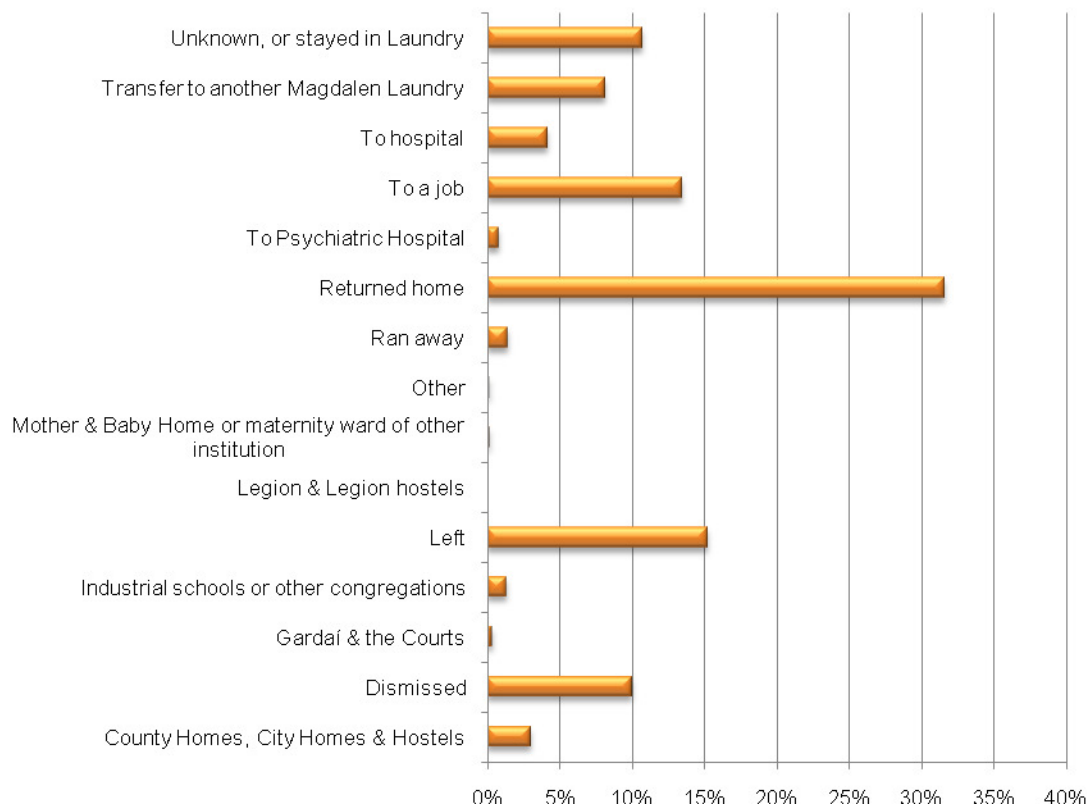
e. Routes of exit for individual Magdalen Laundries



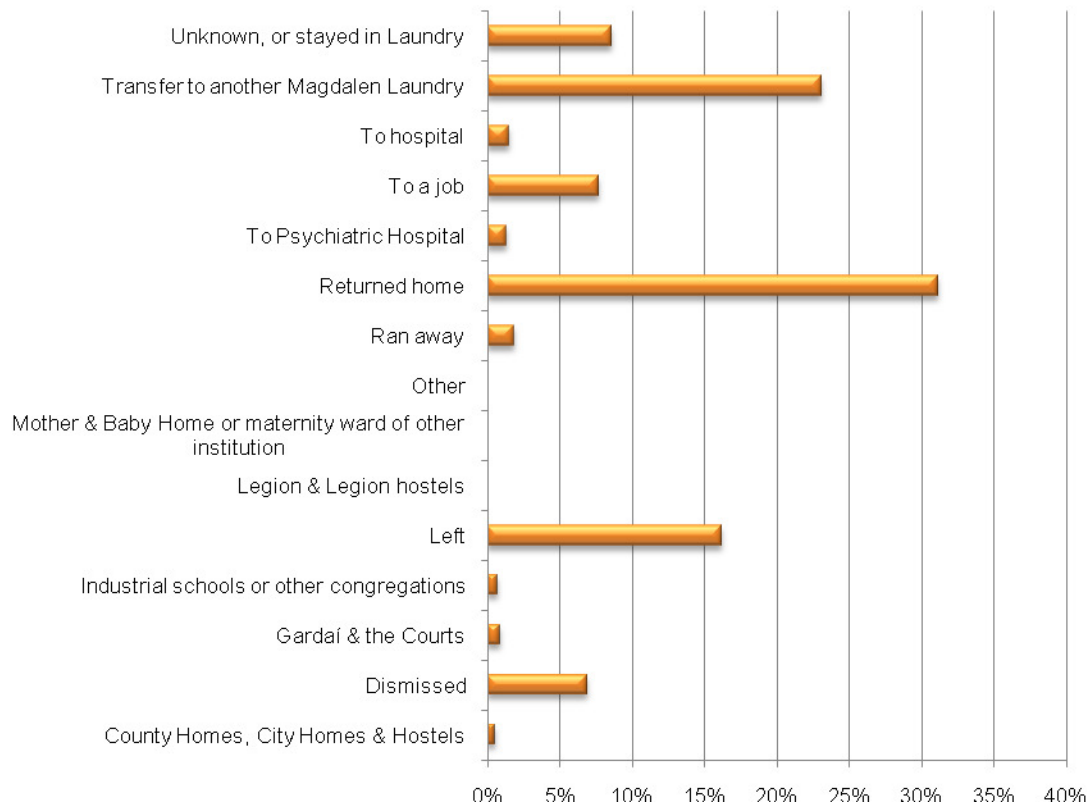
Route of exit by Institution - High Park



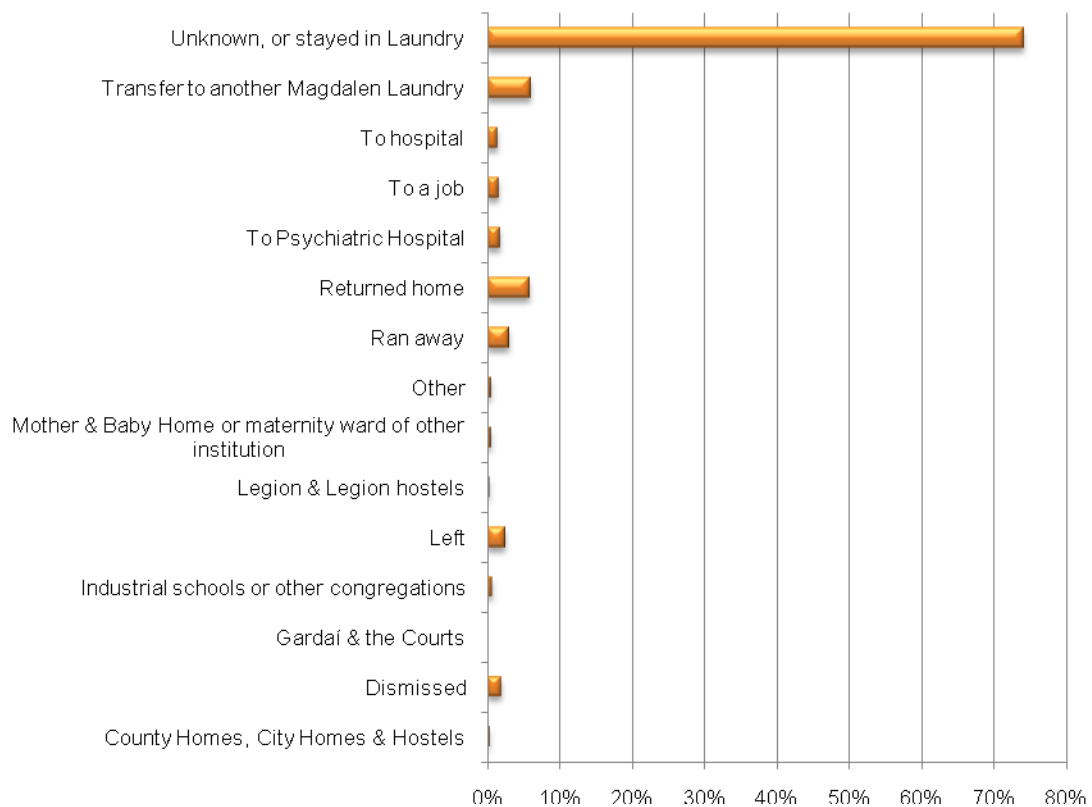
Route of exit by Institution - Limerick



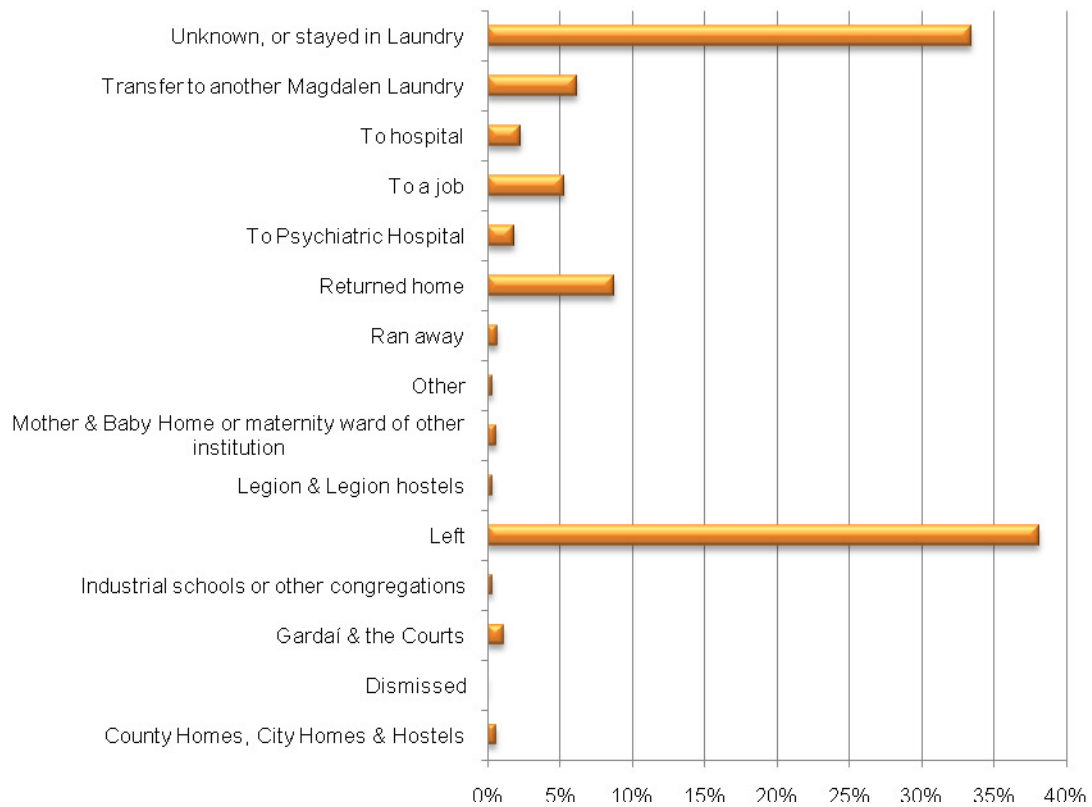
Route of exit by Institution - New Ross



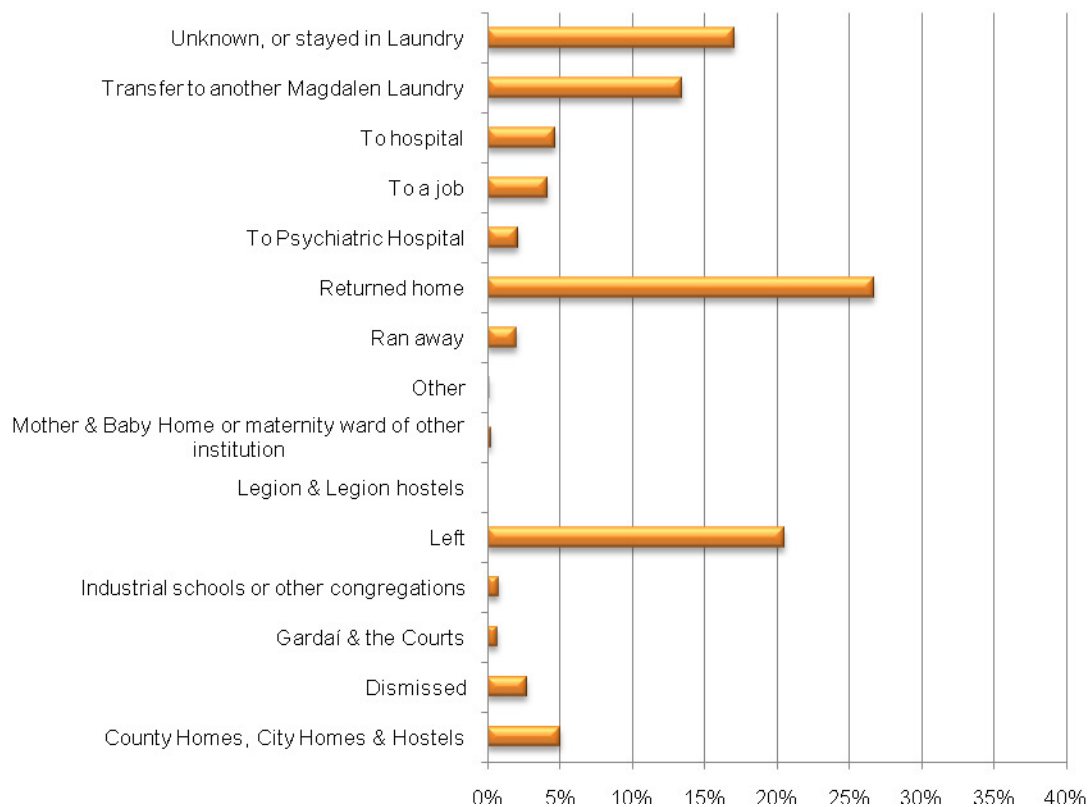
Route of exit by Institution - Peacock Lane, Cork



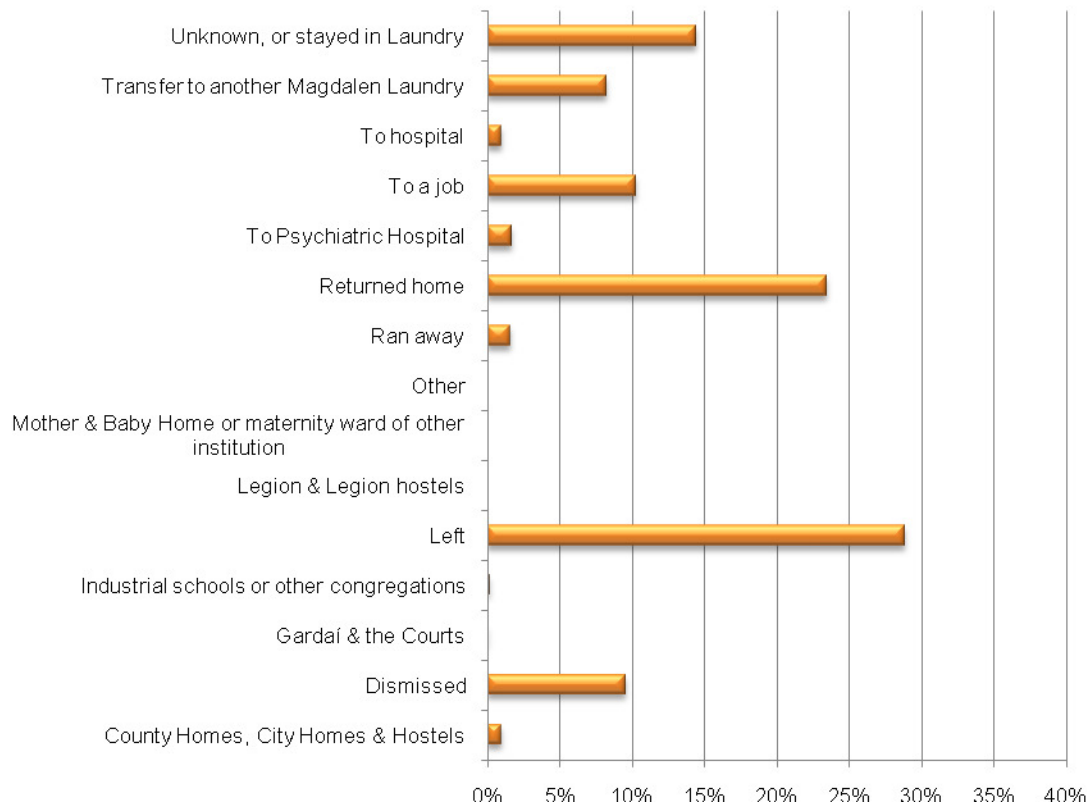
Route of exit by Institution - Sean McDermott Street



Route of exit by Institution - Sunday's Well, Cork

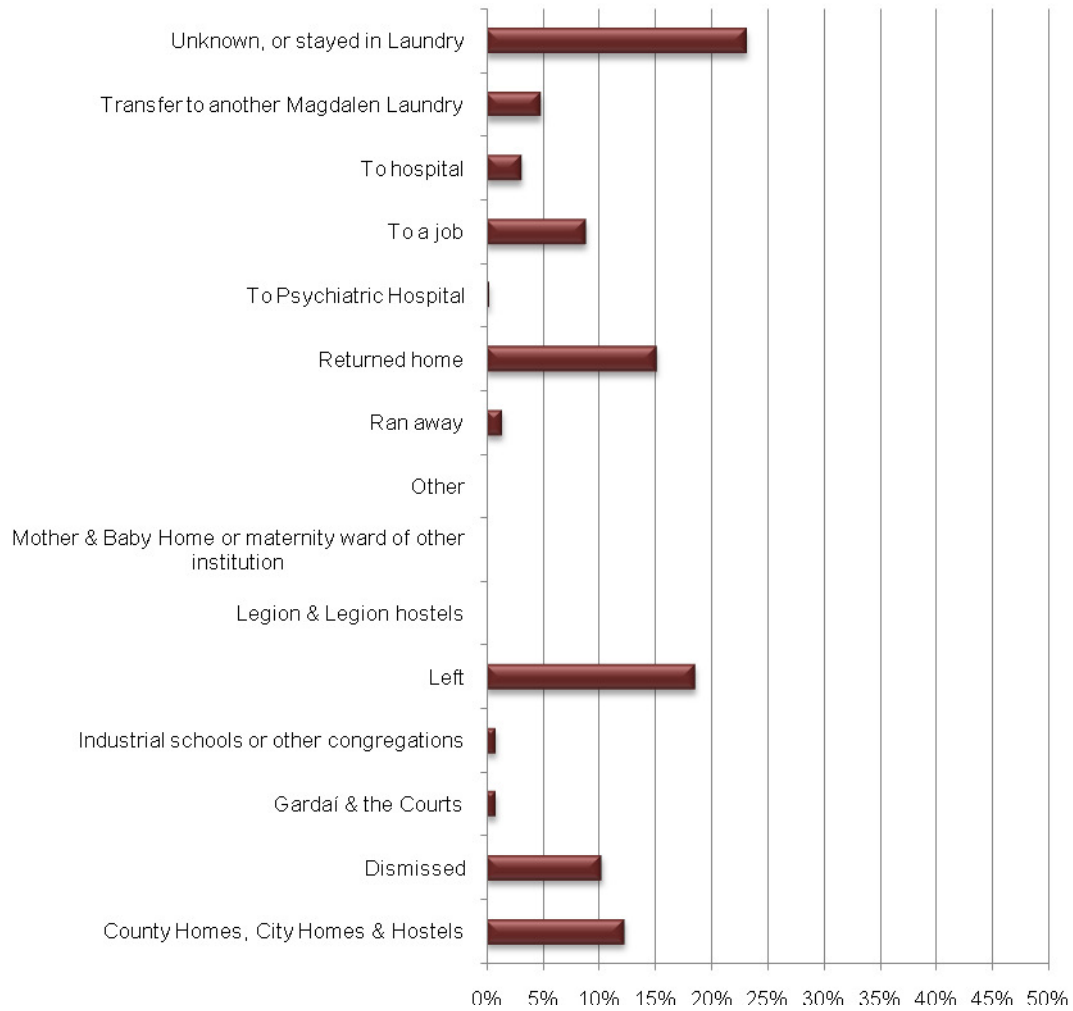


Route of exit by Institution - Waterford

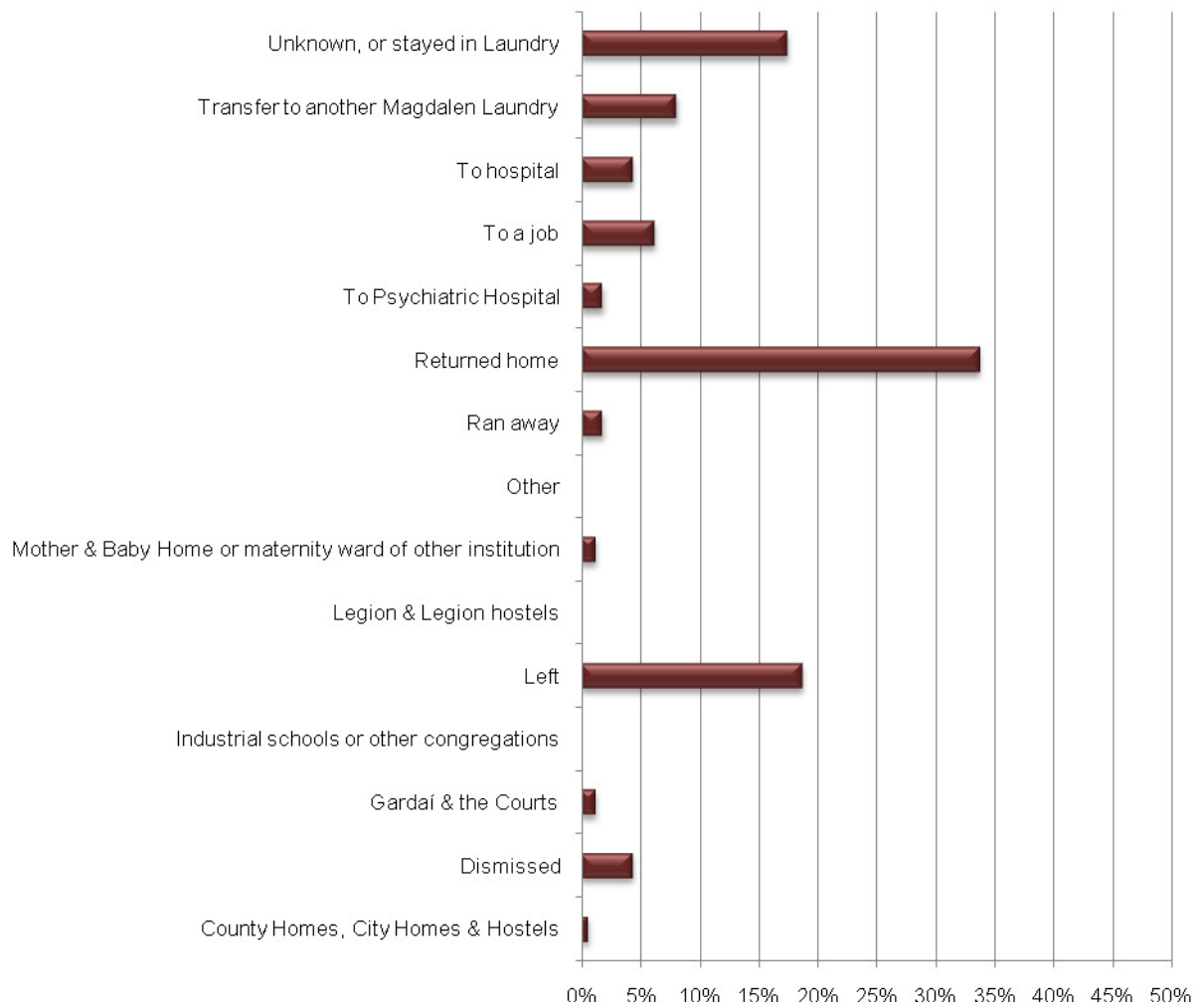


f. Routes of exit by routes of entry

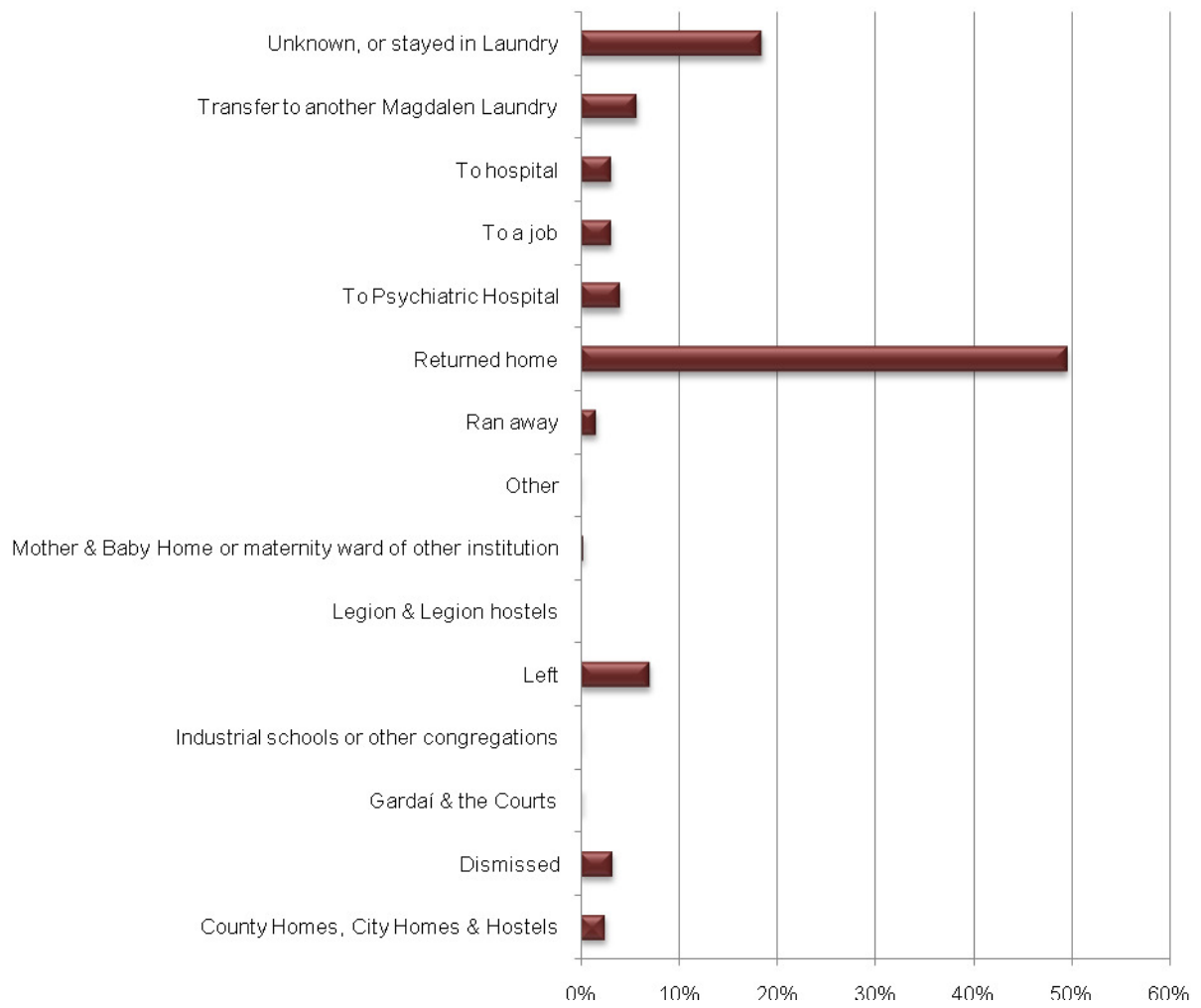
Route of exit for entries from County Homes & City Homes



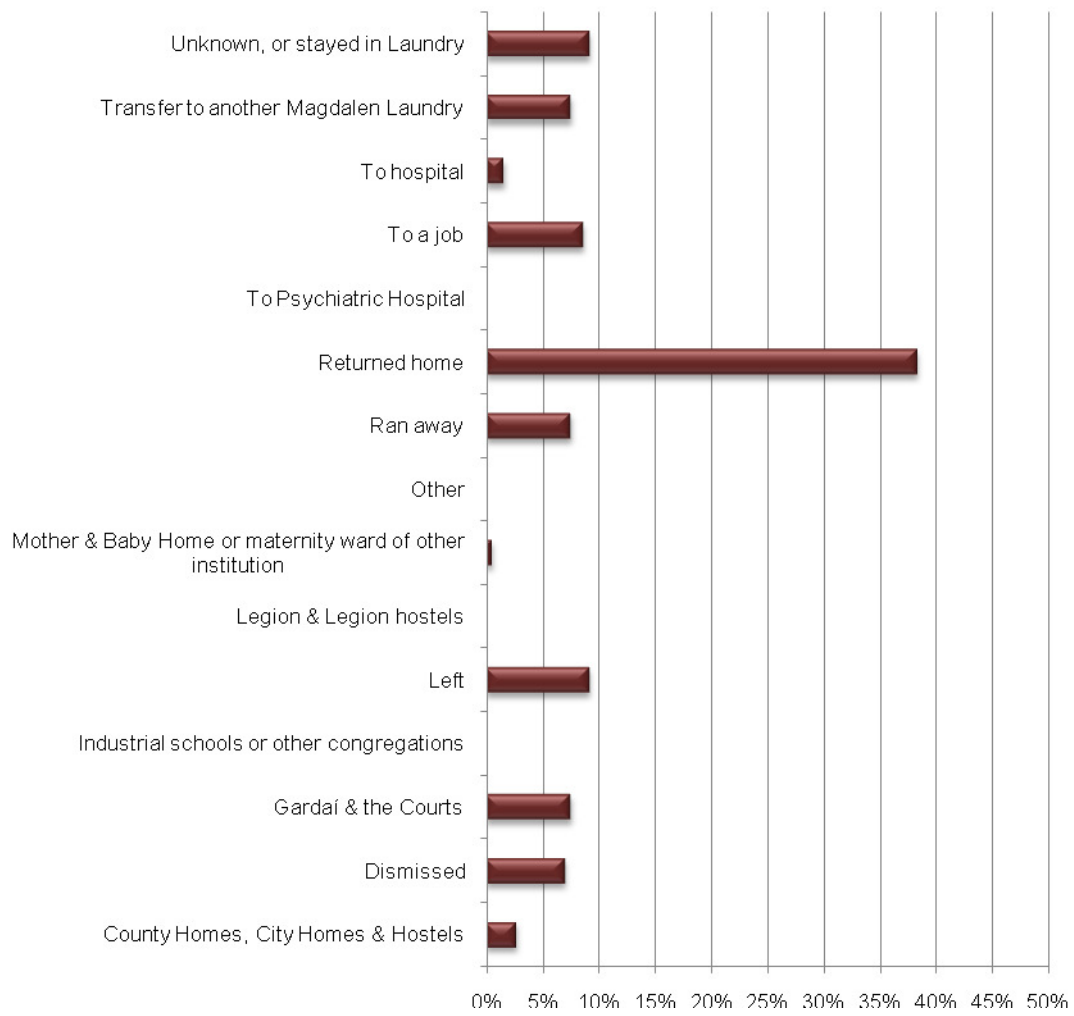
Route of exit for entries from Court



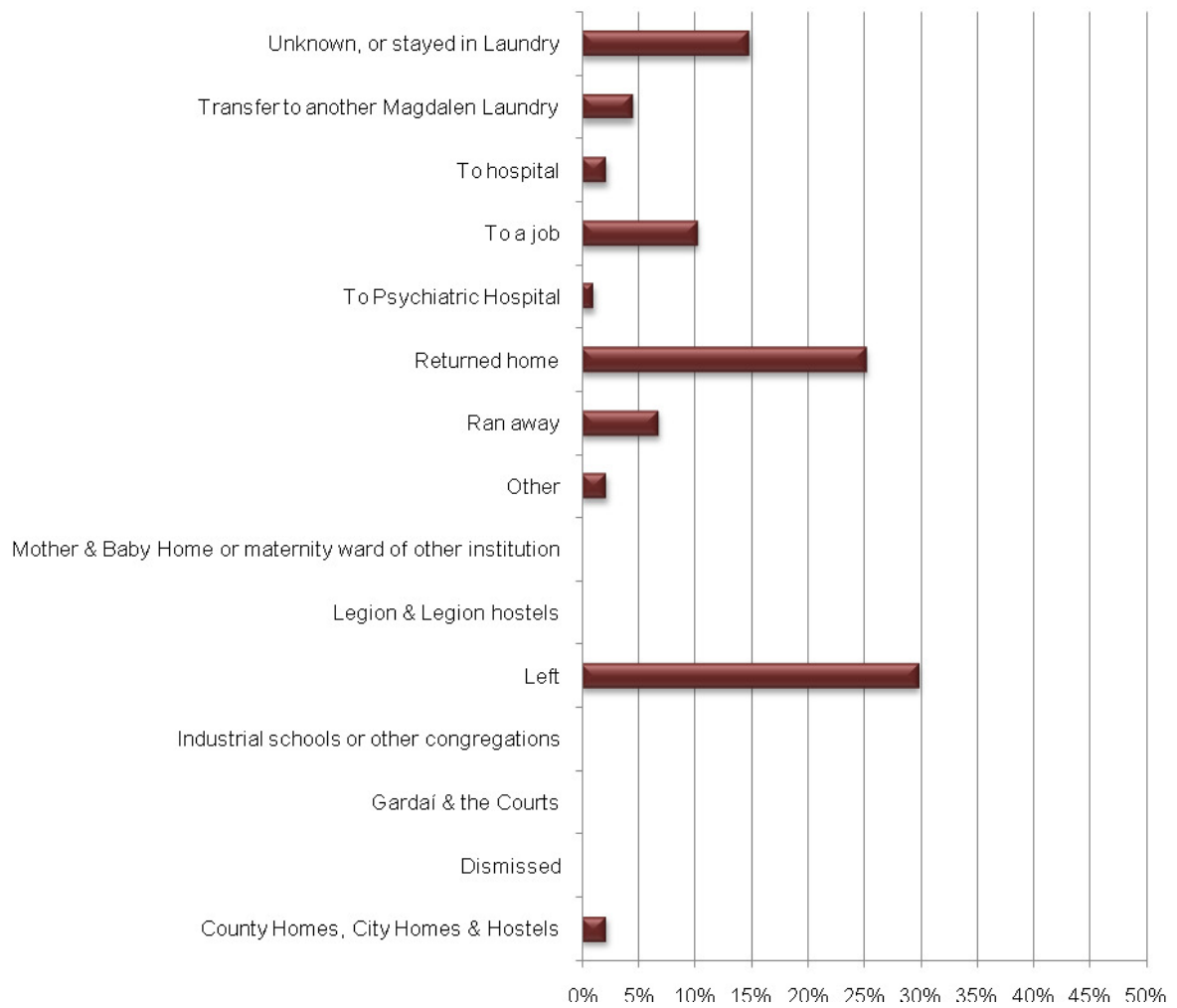
Route of exit for entries from Family



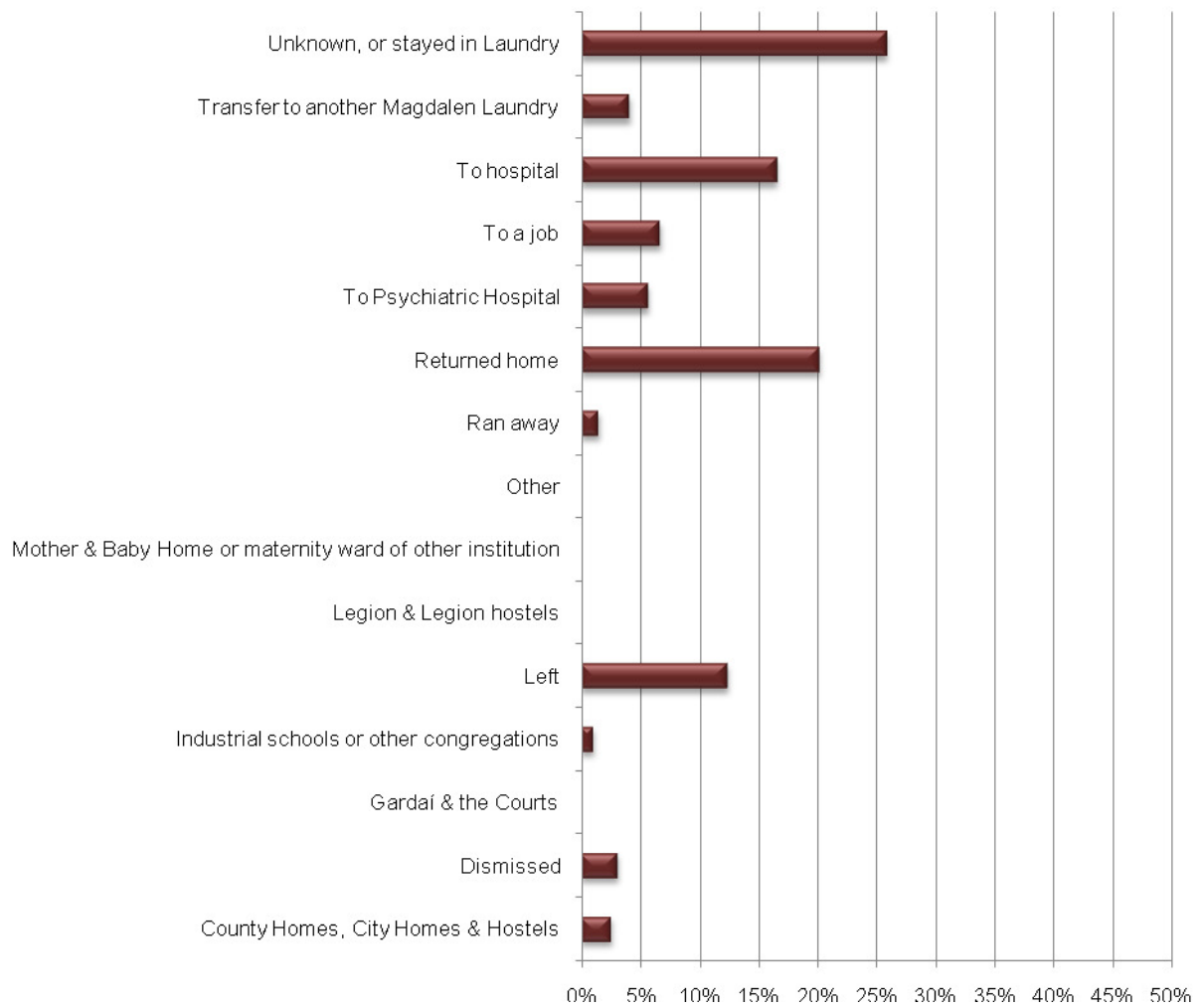
Route of exit for entries from Gardaí



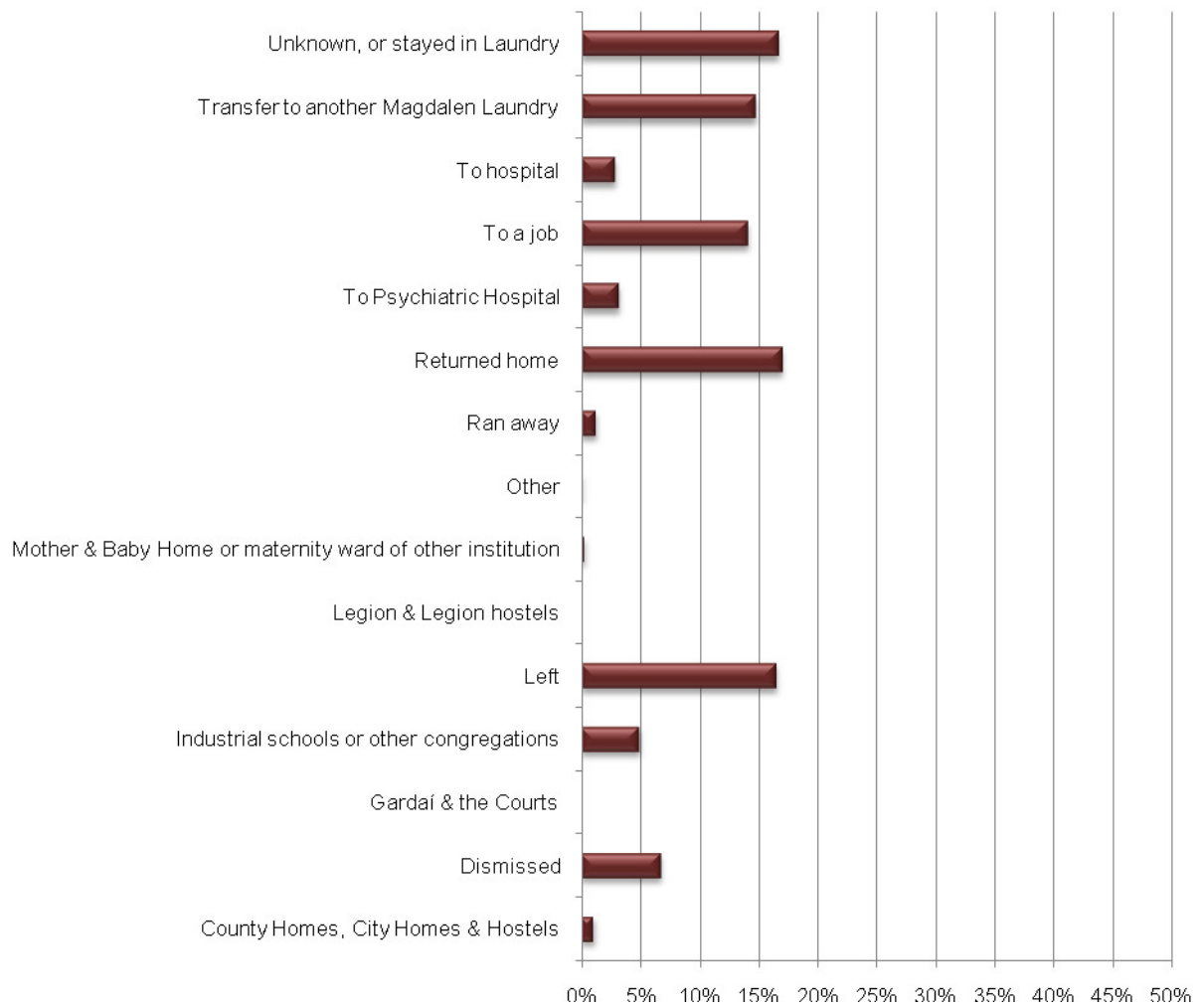
Route of exit for entries from Health and social service authorities



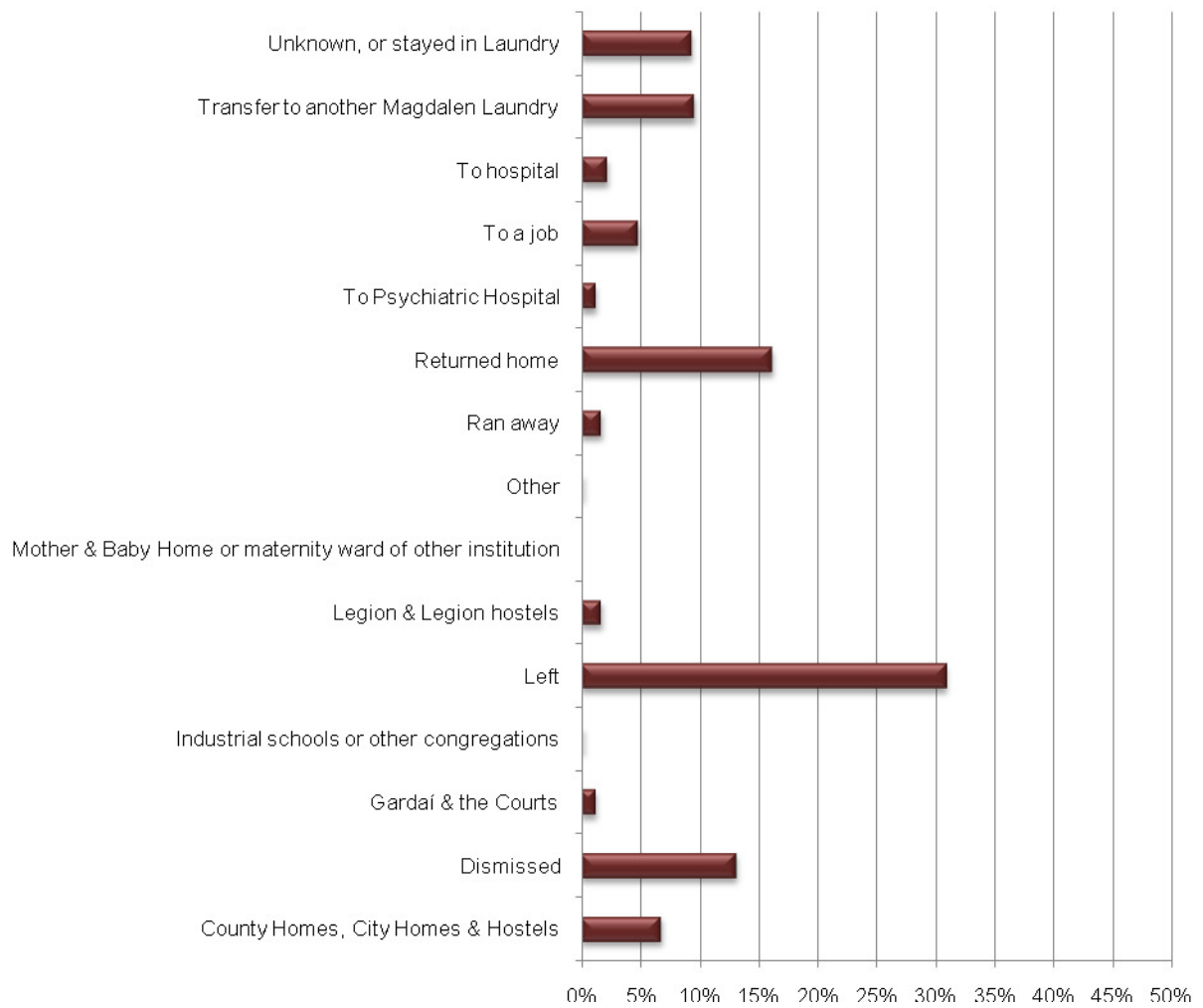
Route of exit for entries from Hospitals, Doctors, Nurses



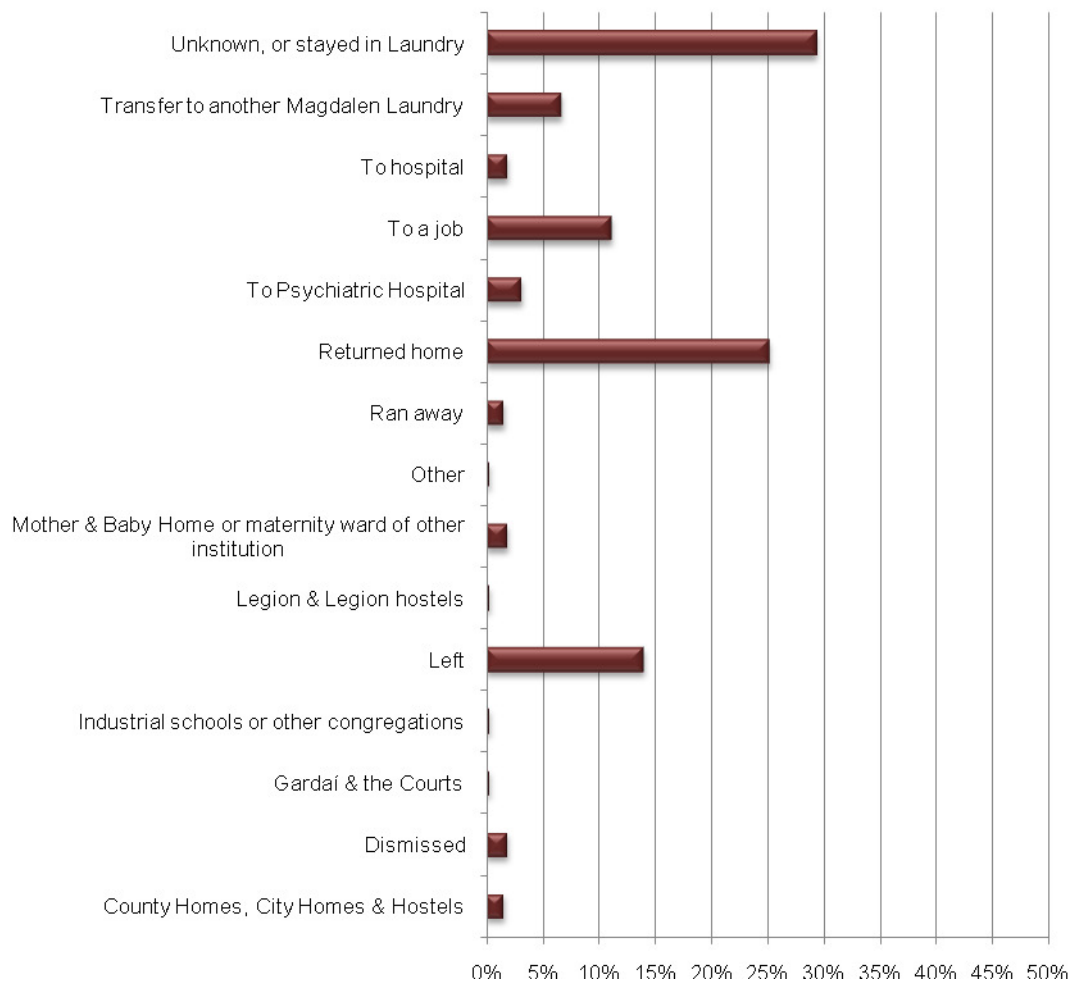
Route of exit for entries from Industrial and Reformatory Schools



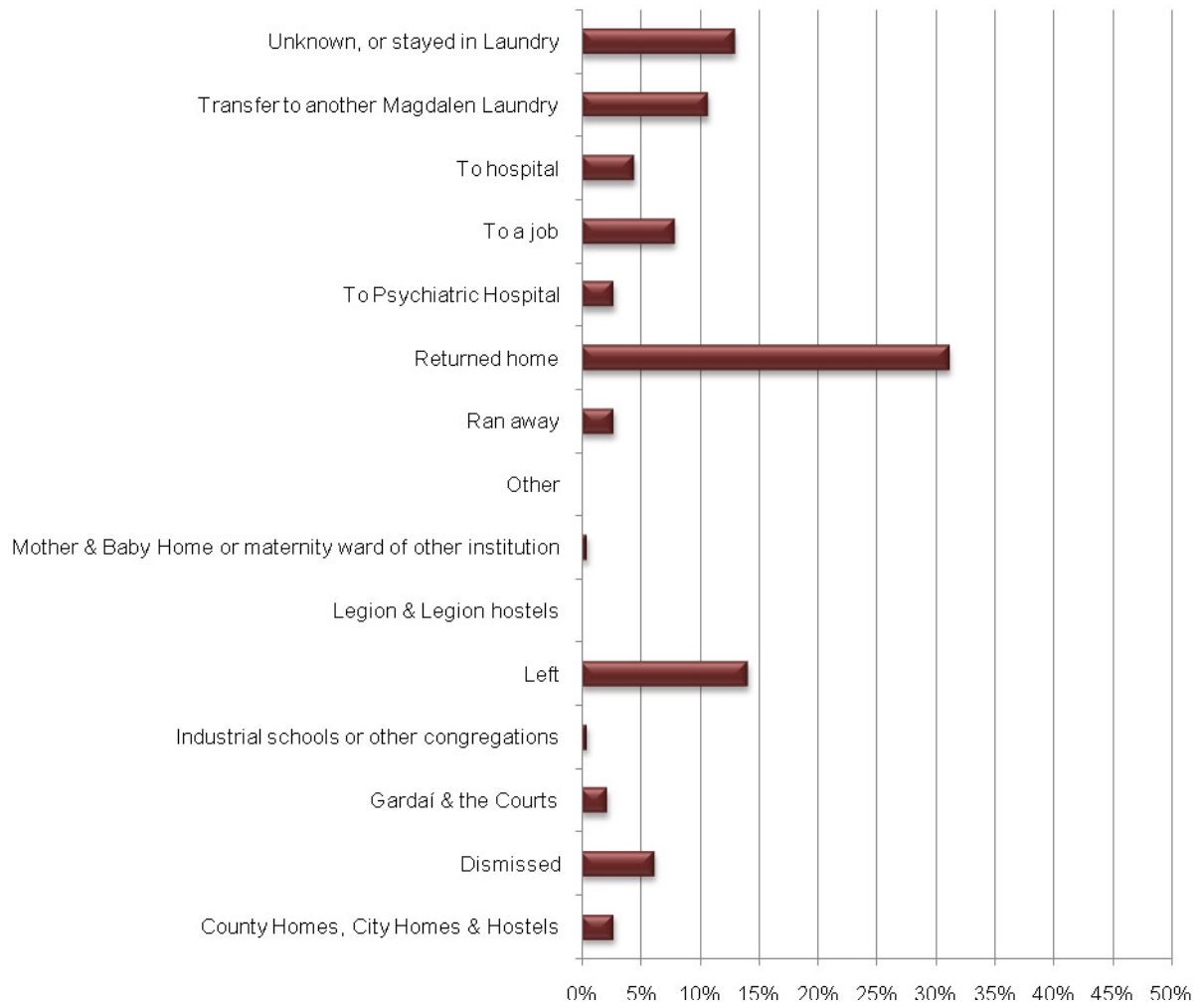
Route of exit for entries from Legion of Mary



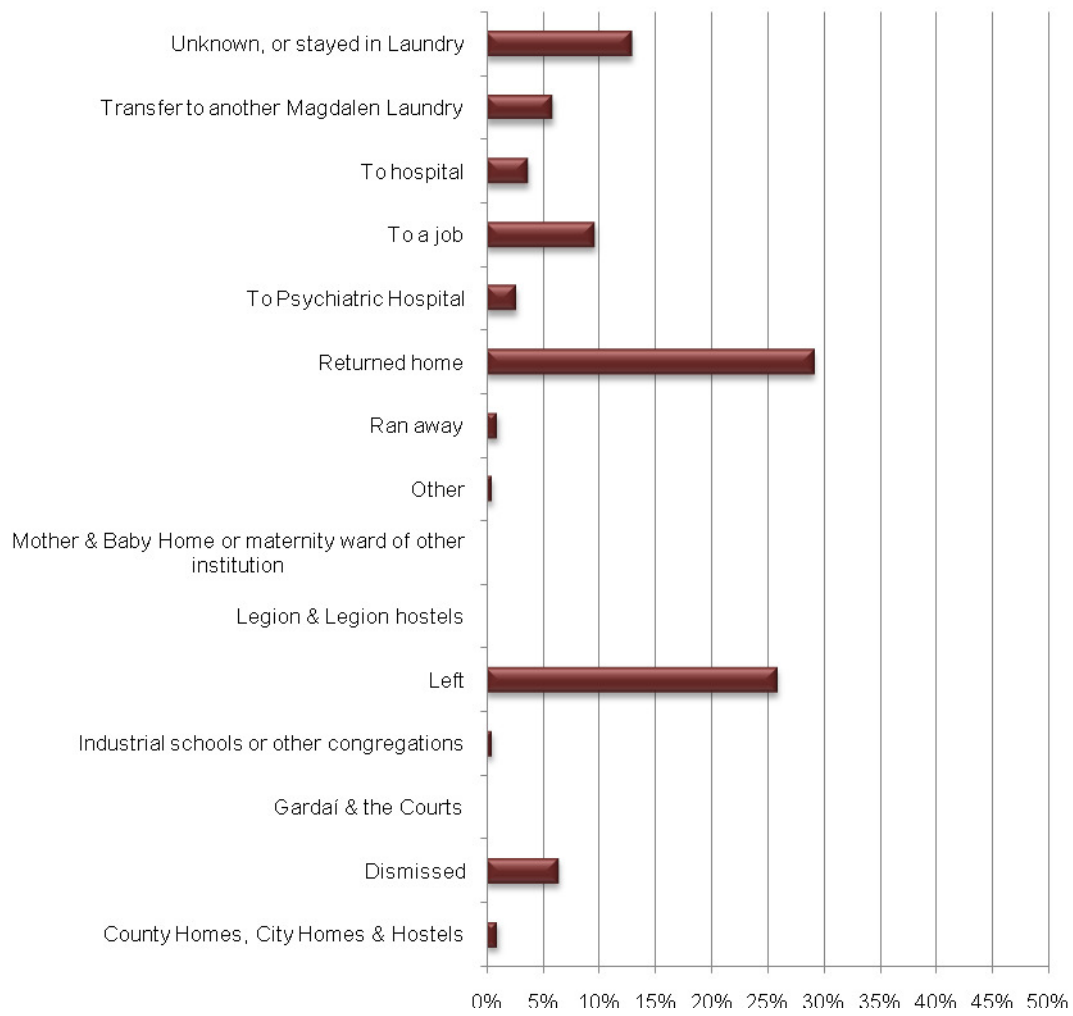
Route of exit for entries from Mother and Baby Homes & Adoption Societies



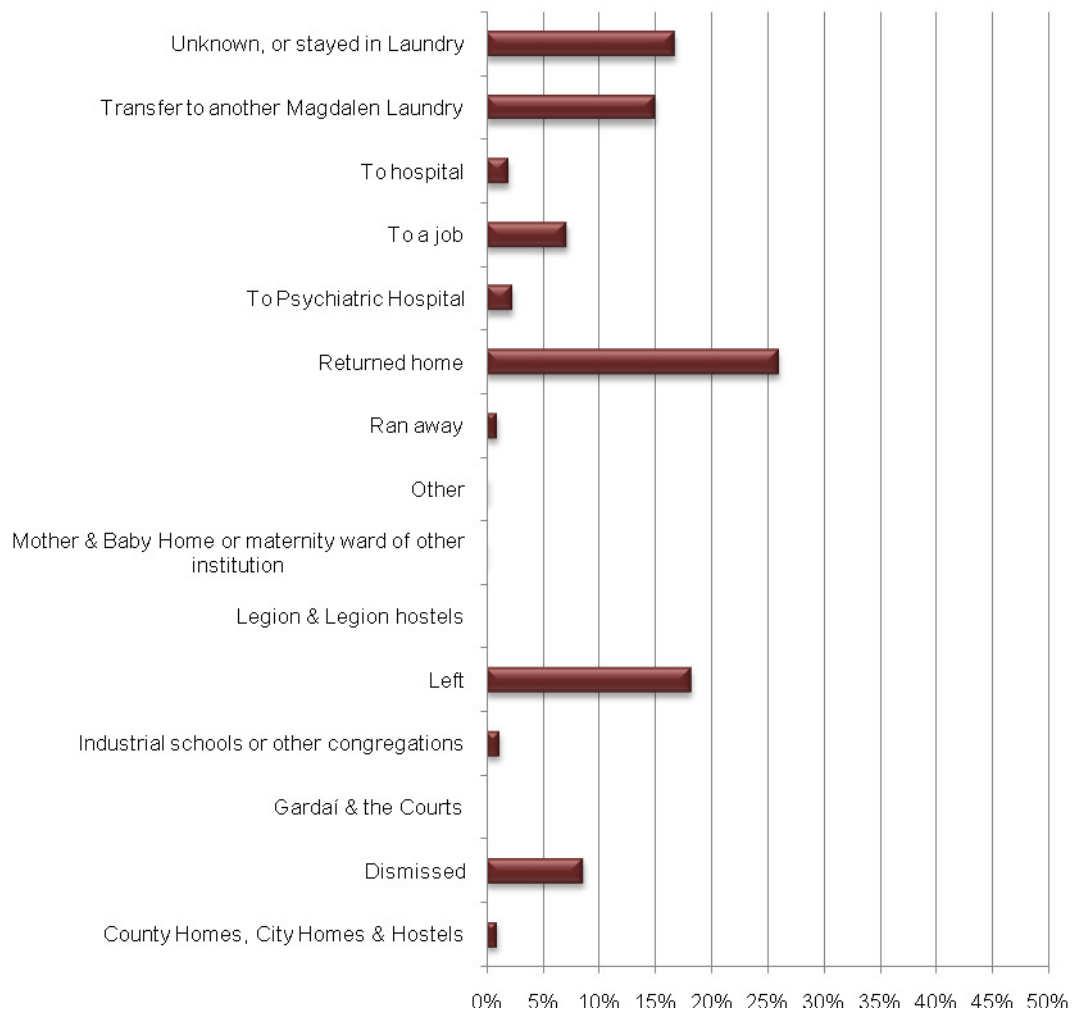
Route of exit for entries from NSPCC



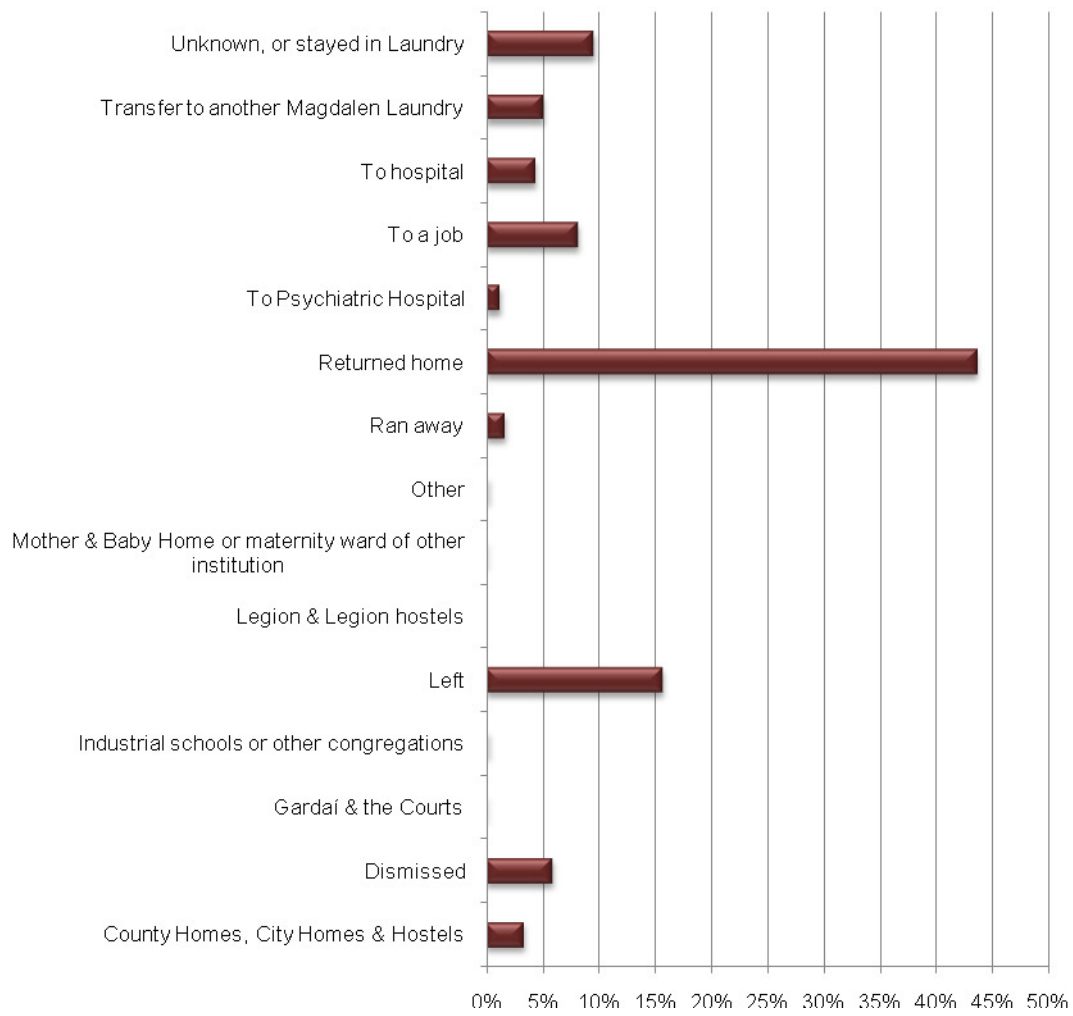
Route of exit for entries from Other



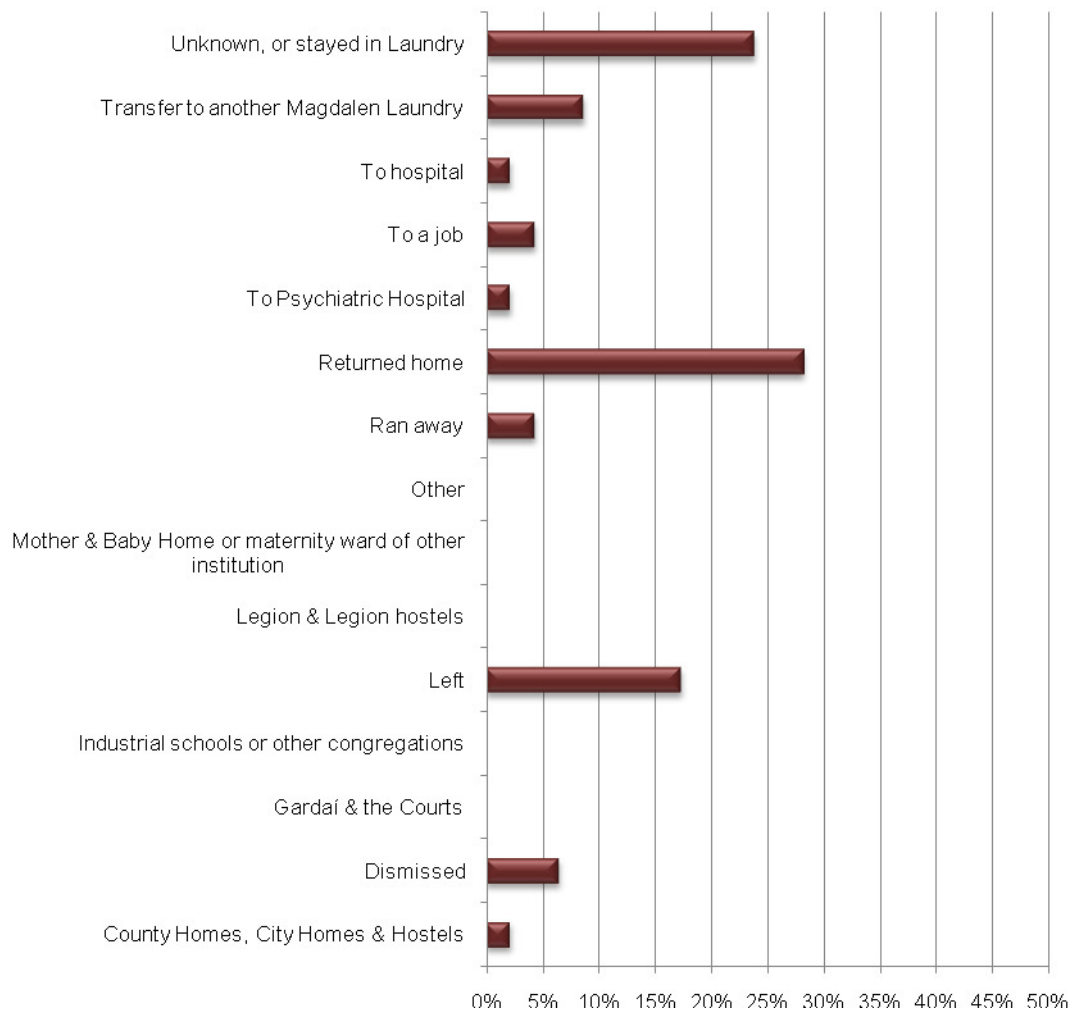
Route of exit for entries from Other congregations



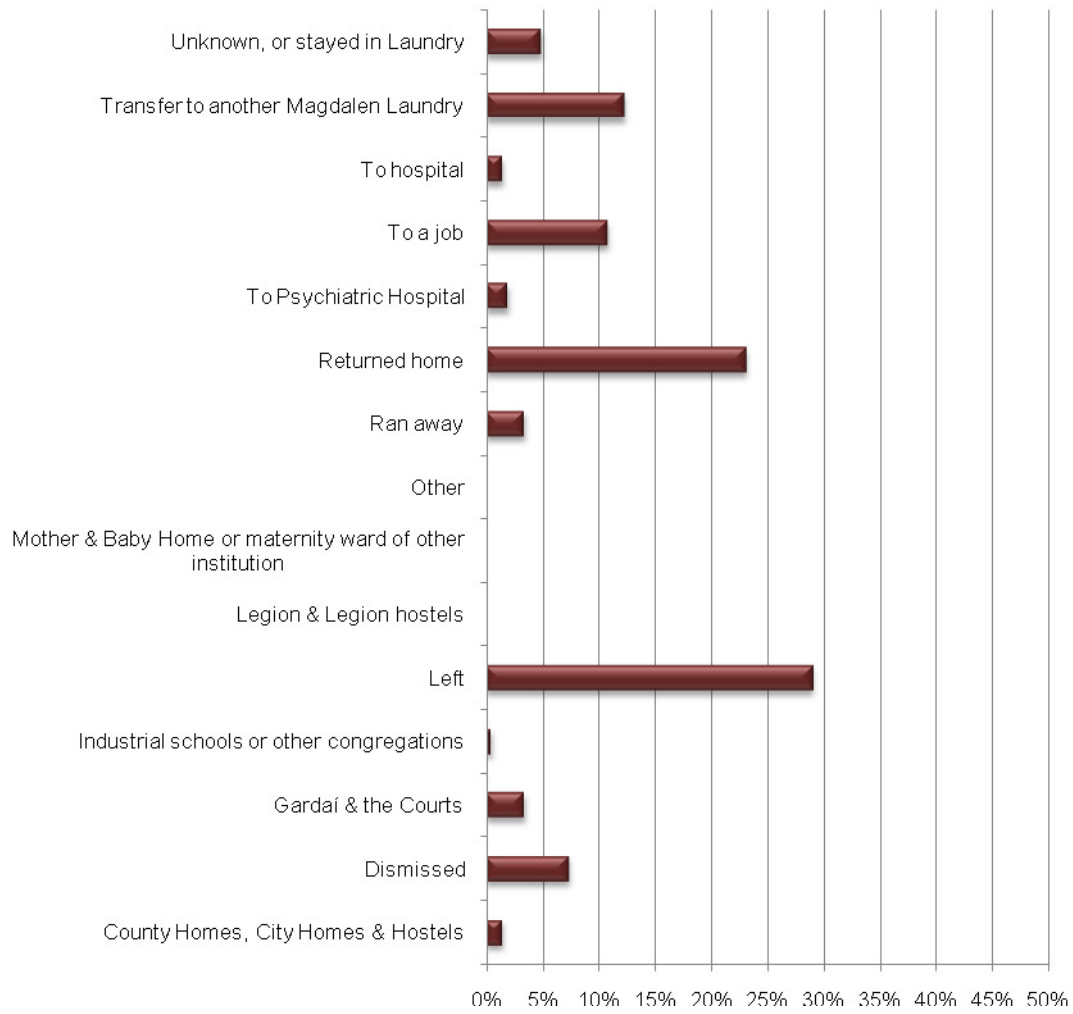
Route of exit for entries from Priest



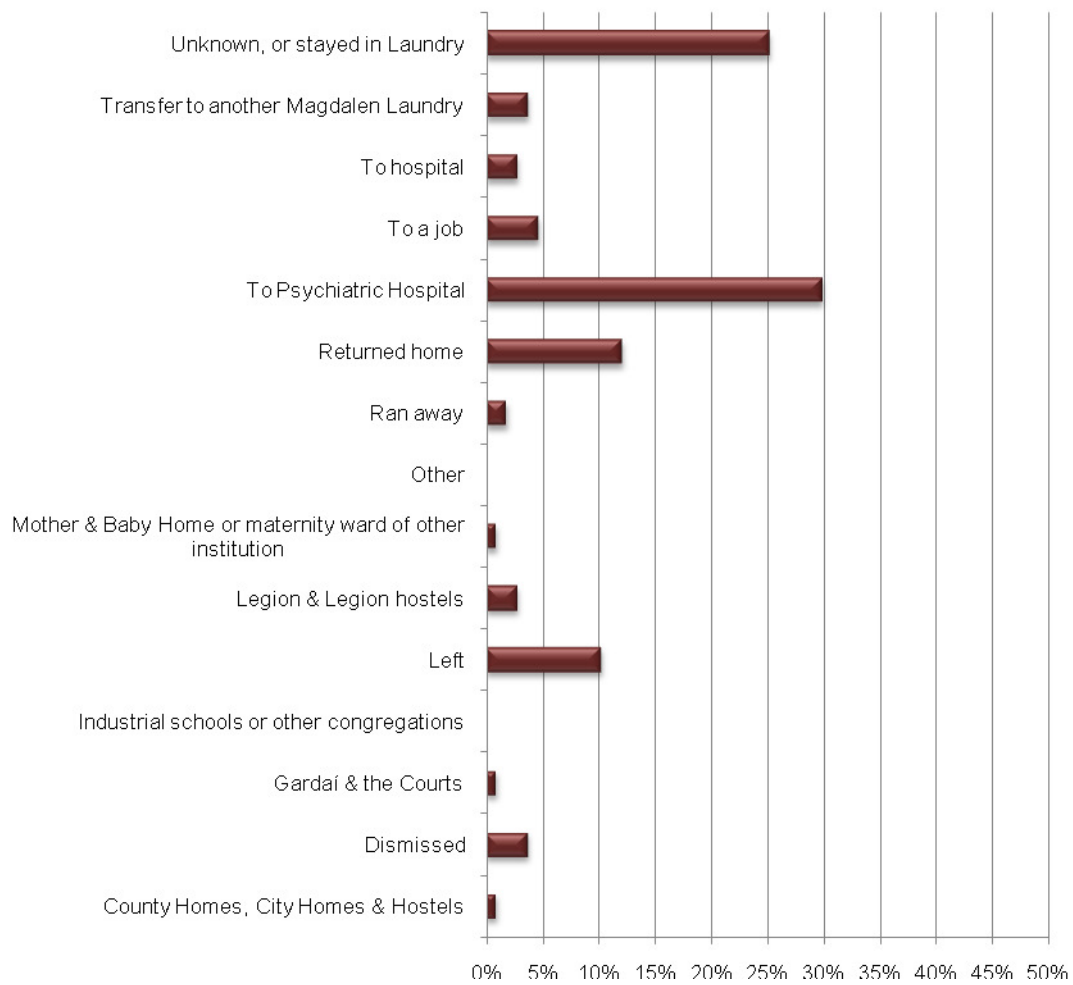
Route of exit for entries from Prison



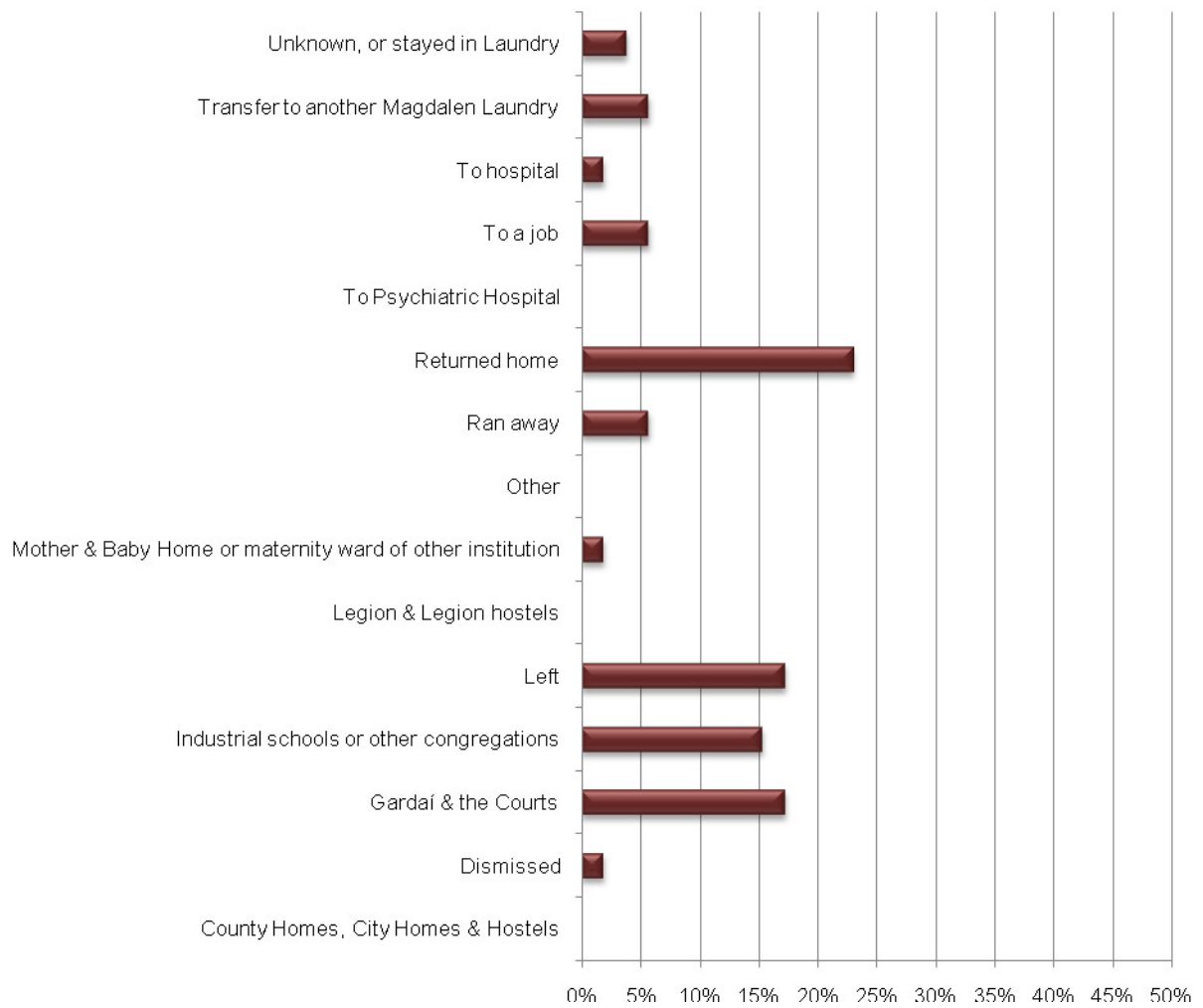
Route of exit for entries from Probation



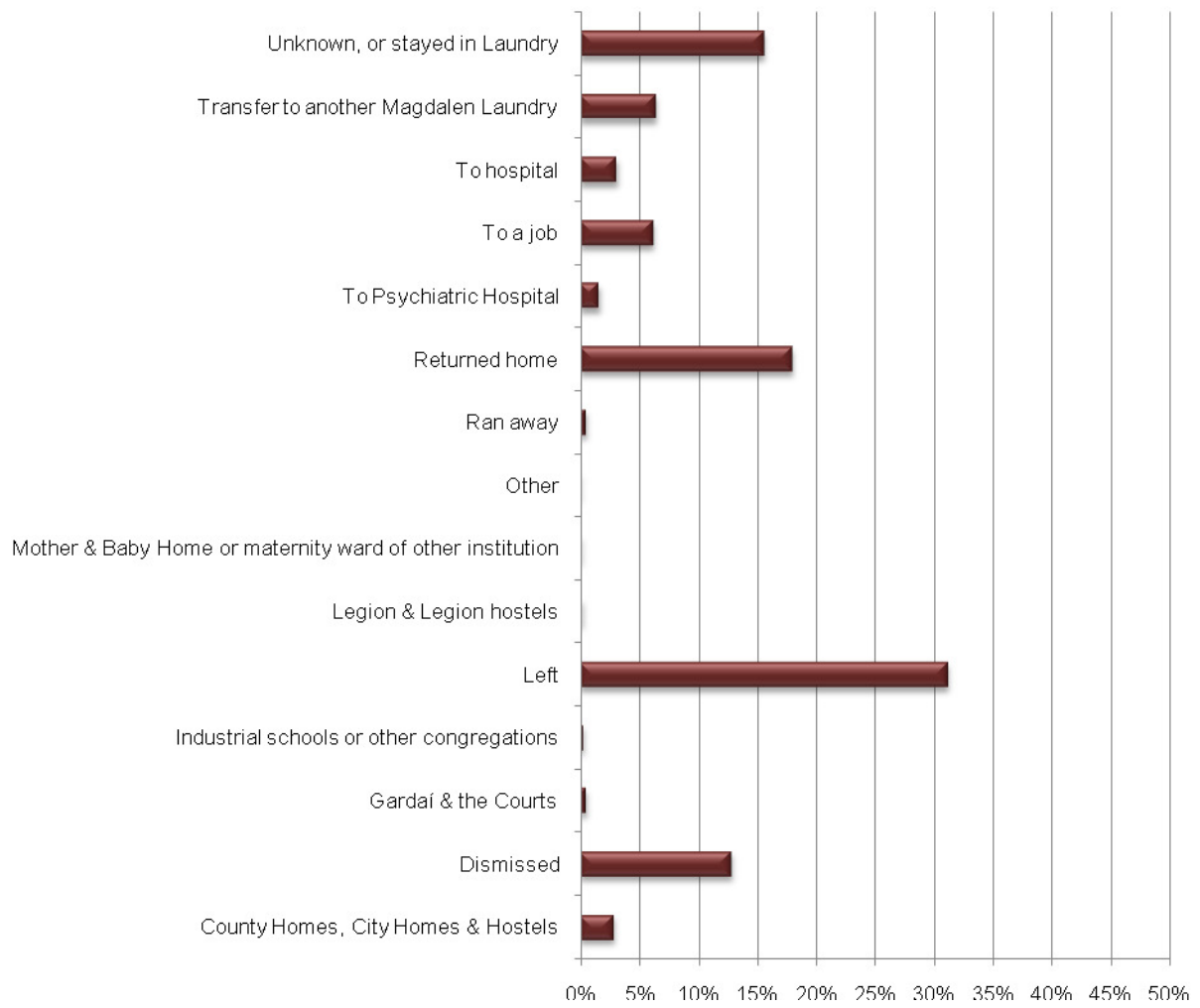
Route of exit for entries from Psychiatric hospitals & institutions for the intellectually disabled



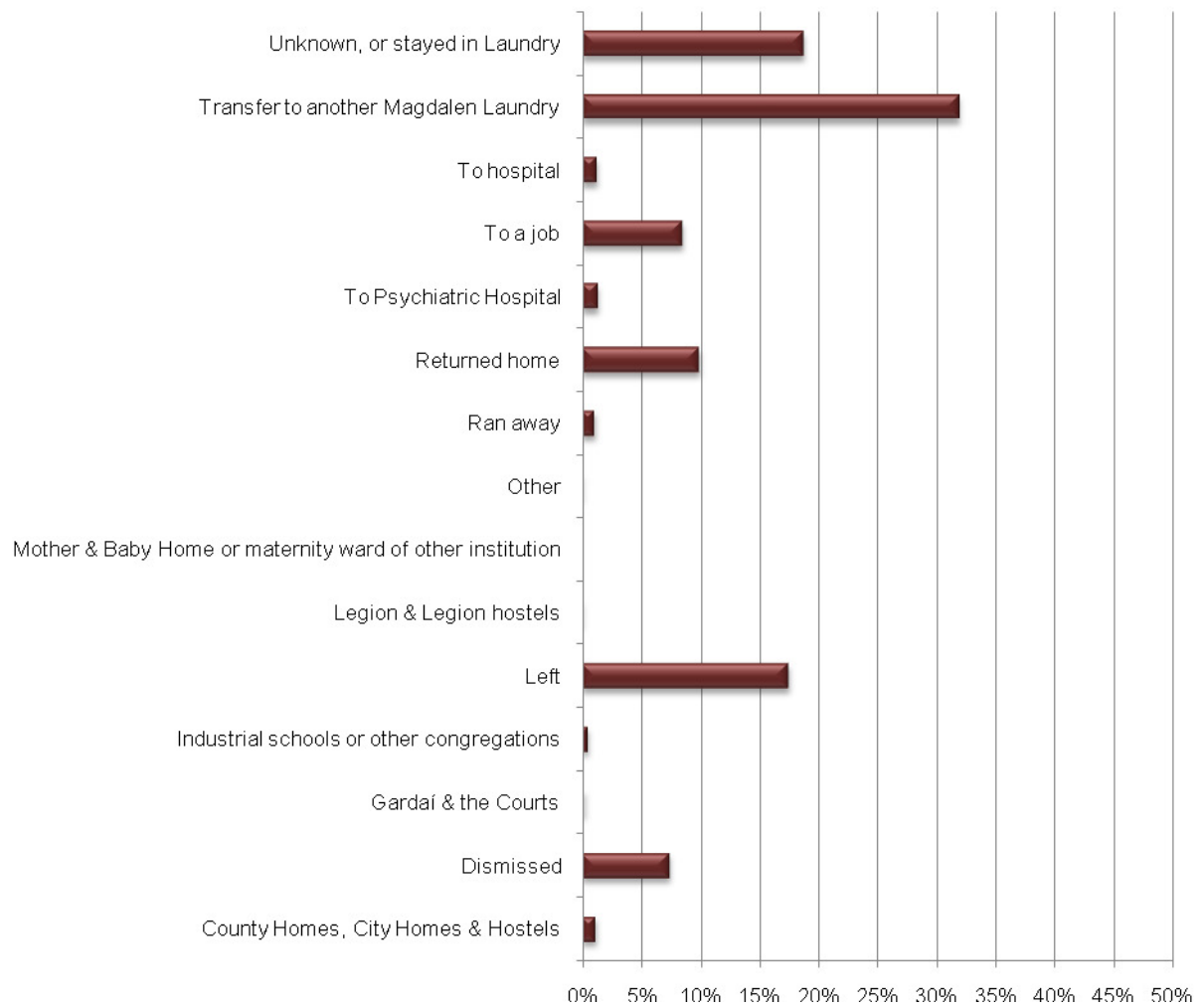
Route of exit for entries from Remand



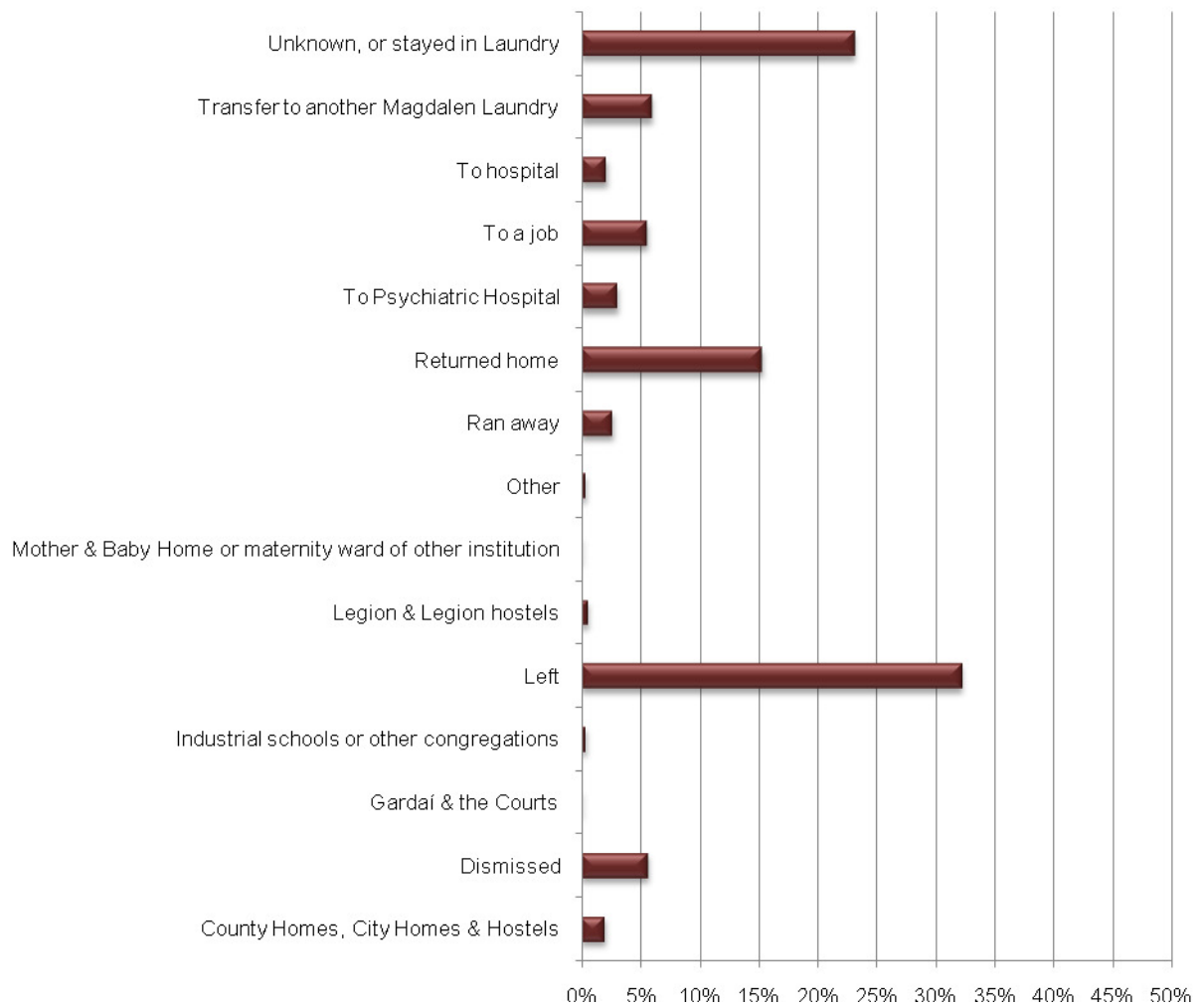
Route of exit for entries from Self



Route of exit for entries from Transfer from another Magdalen Laundry

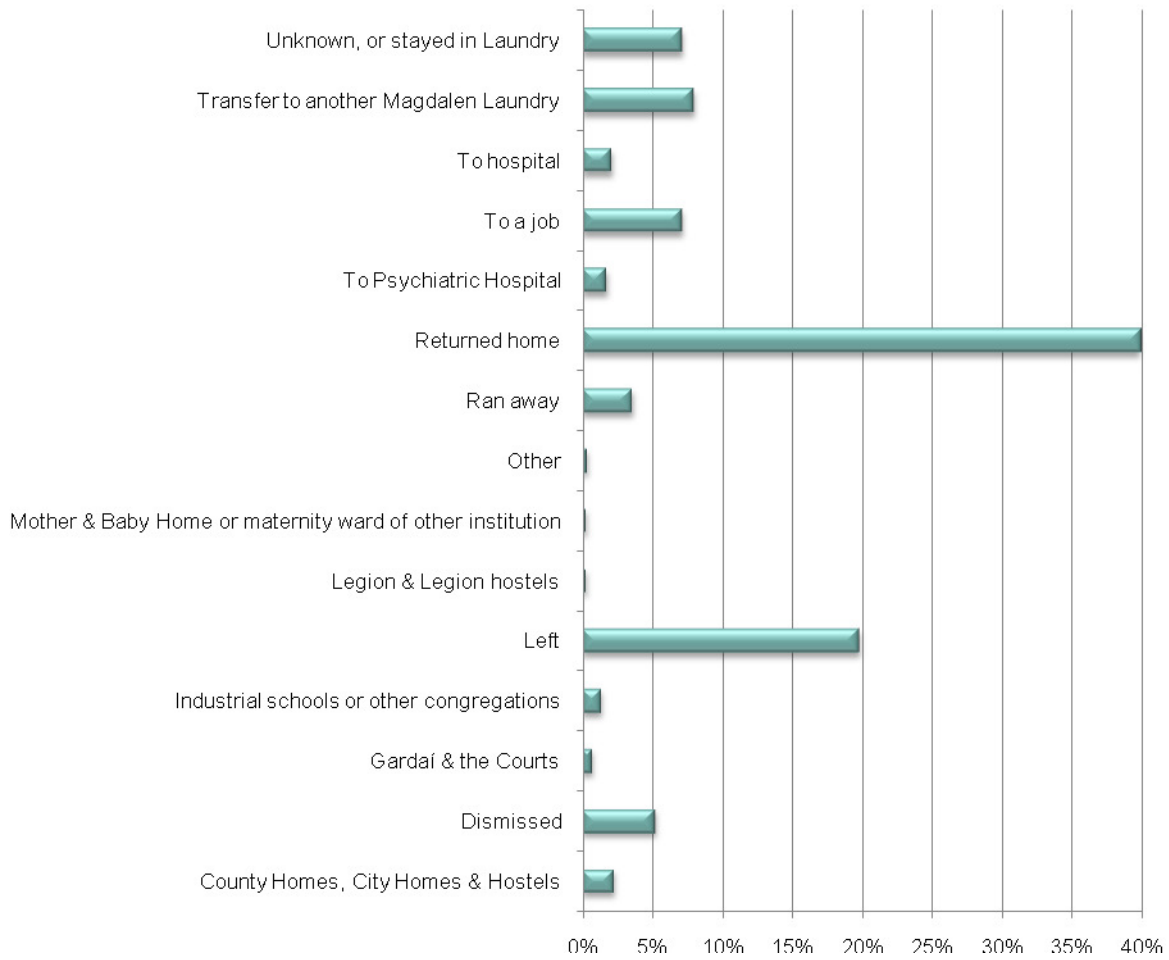


Route of exit for entries from Unknown, or stayed in Laundry

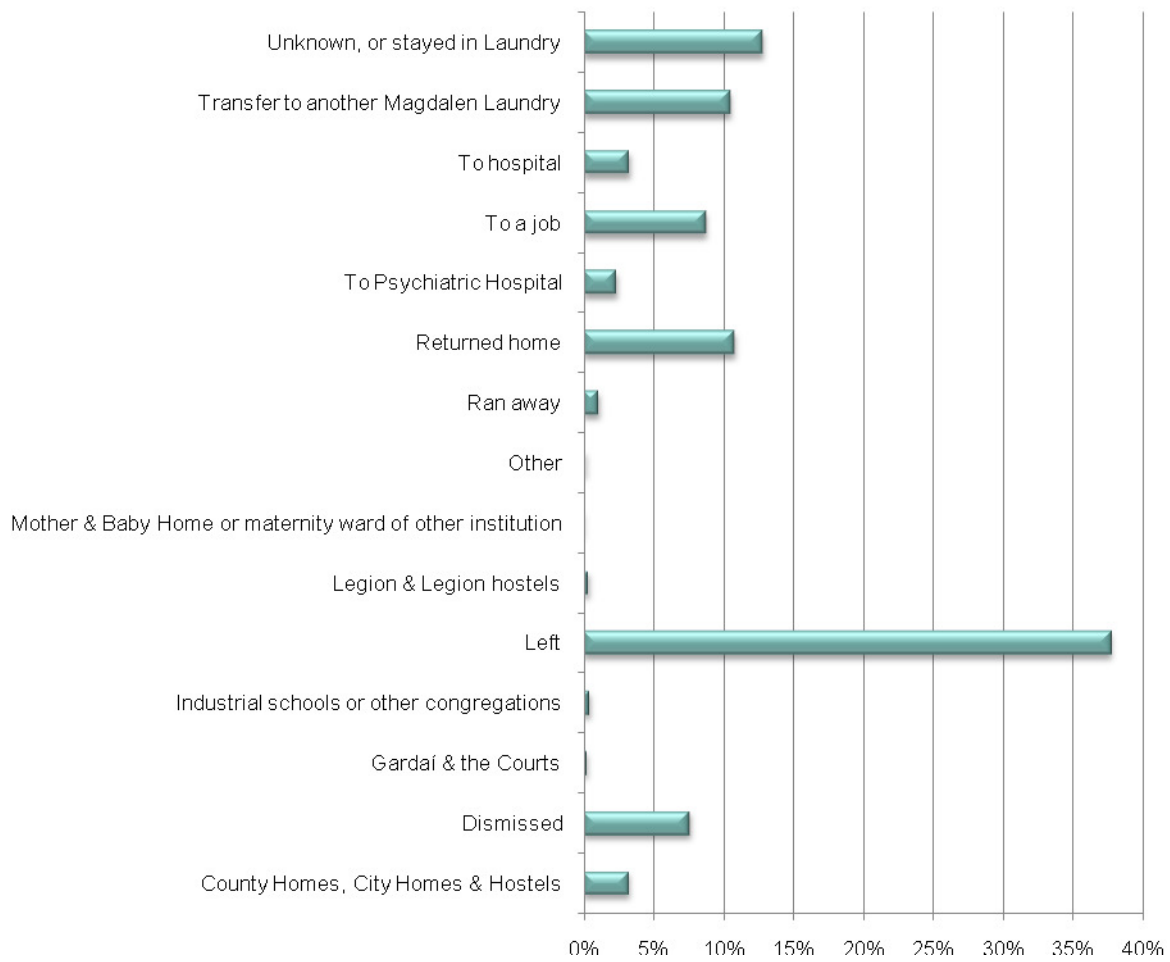


g. Routes of exit by parental background

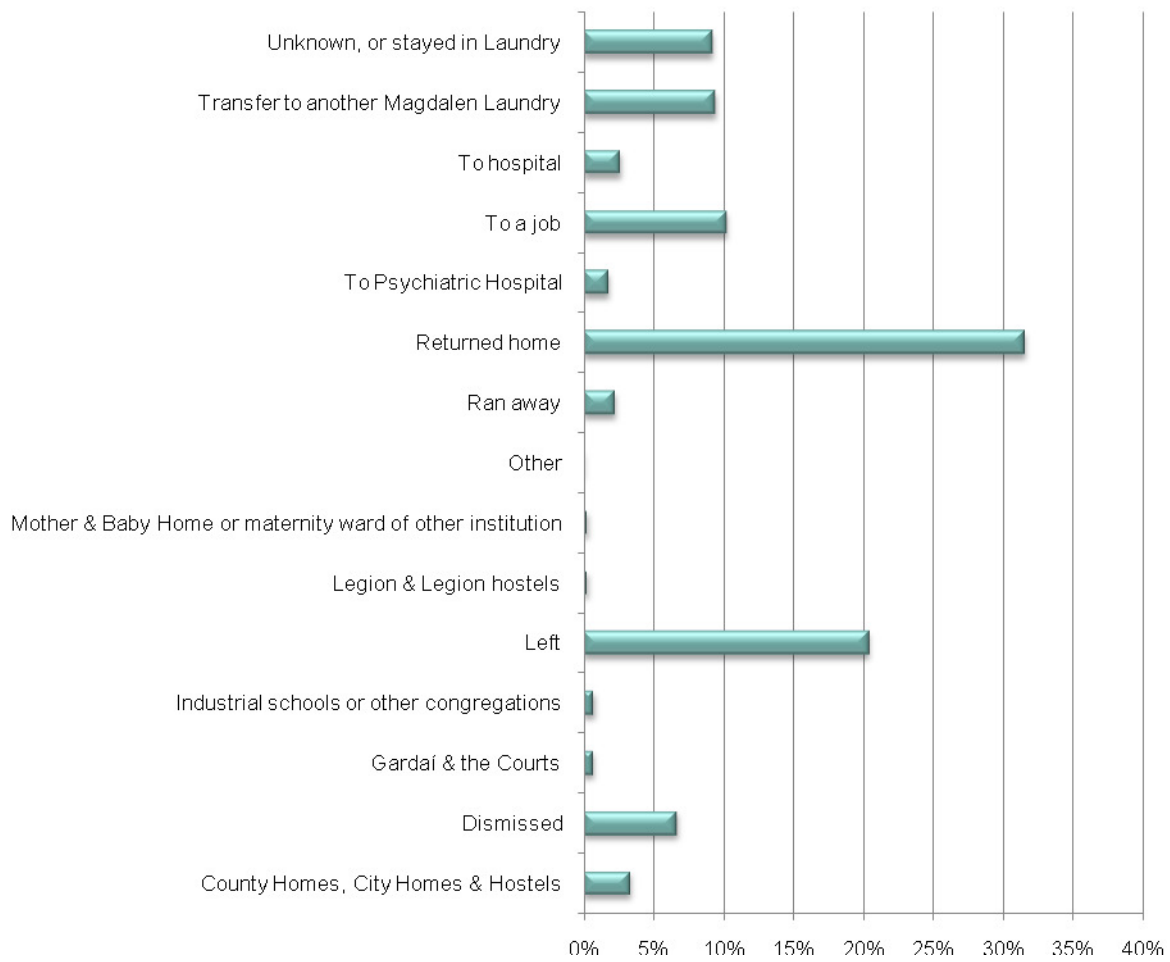
Route of exit by Family status - Both parents alive



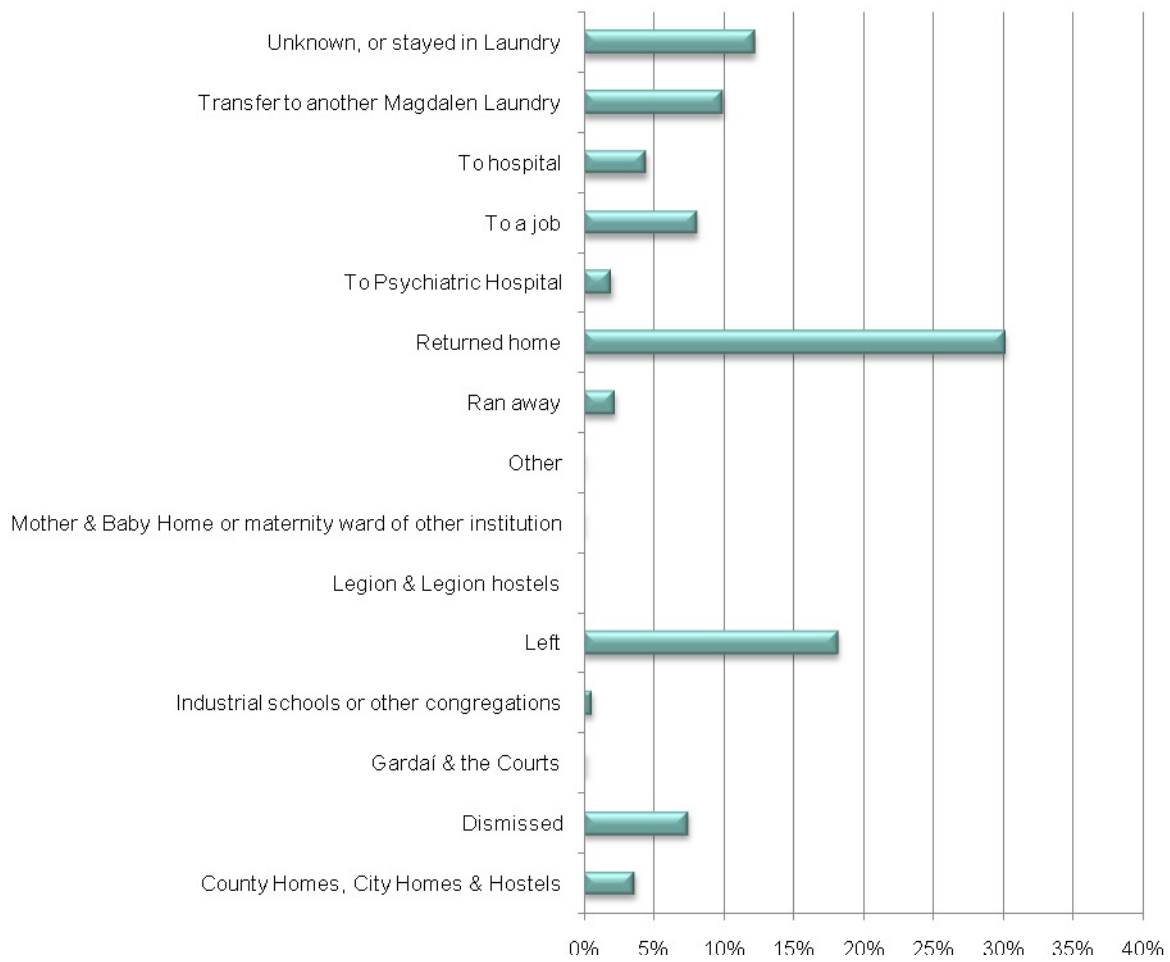
Route of exit by Family status - Both parents dead



Route of exit by Family Status - Father dead, Mother alive



Route of exit by Family status - Mother dead, Father alive



Route of exit by Family status - Unknown

